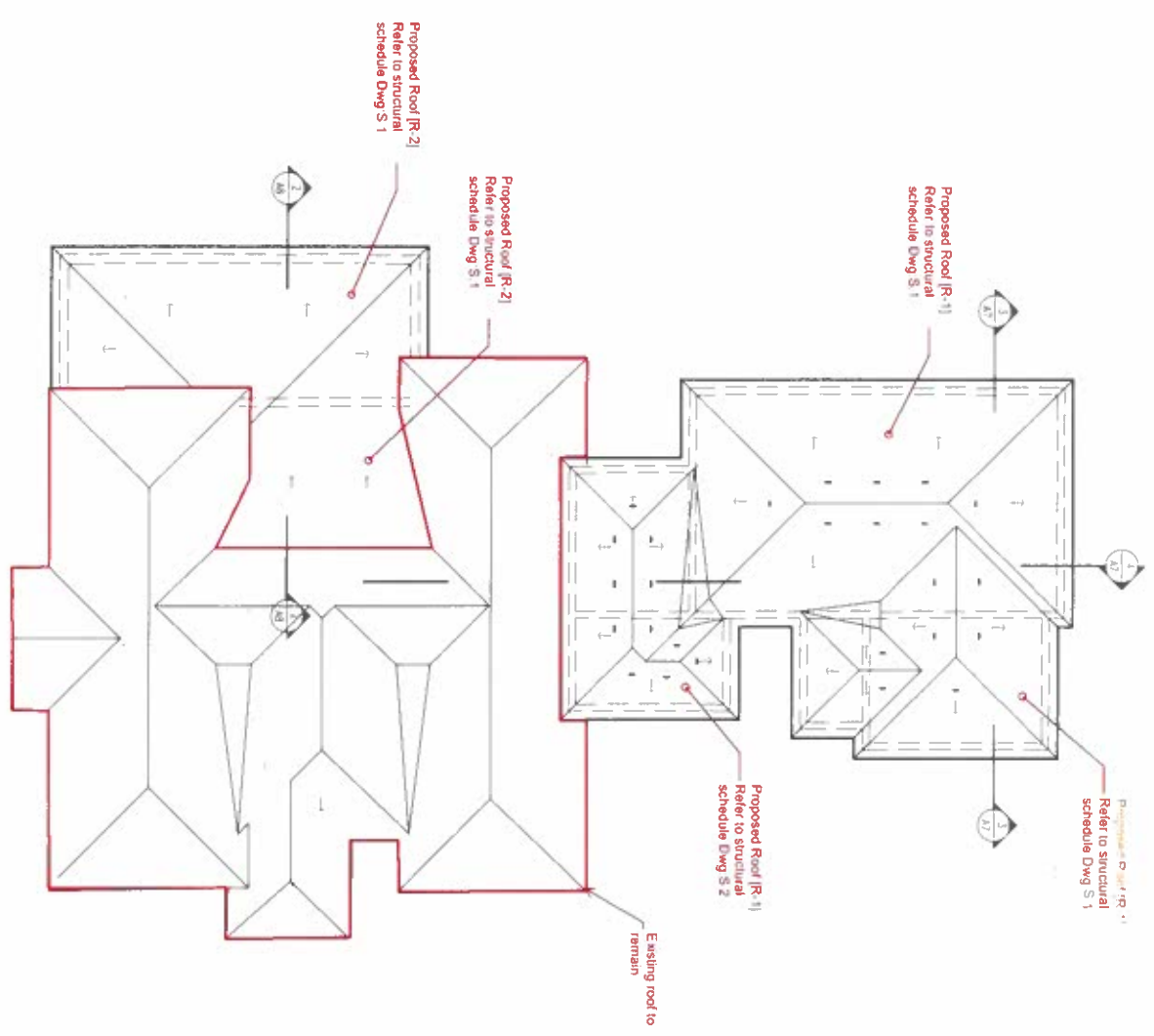


A1 FOUNDATION PLAN
SCALE 1/8"=1'-0"

- LEGEND:**
- EXISTING WALLS
 - NEW WALLS
 - FOUNDATION



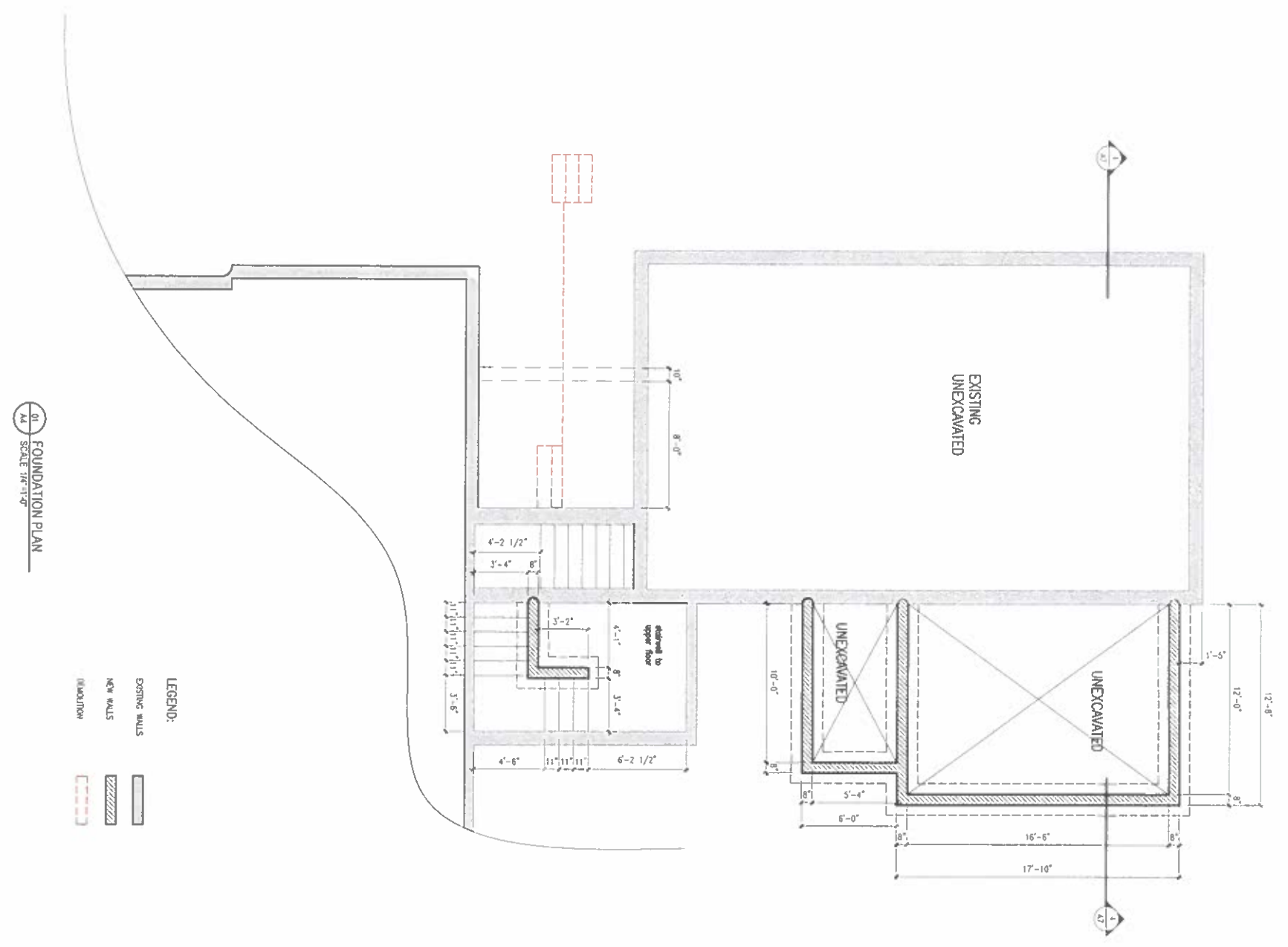
A2 ROOF PLAN
SCALE 1/8"=1'-0"



APPROVED DRAWINGS
SUBJECT TO PERMIT CONDITIONS
ONE SET OF DRAWINGS SHALL REMAIN ON SITE
PERMIT NO. **BR0195-25**

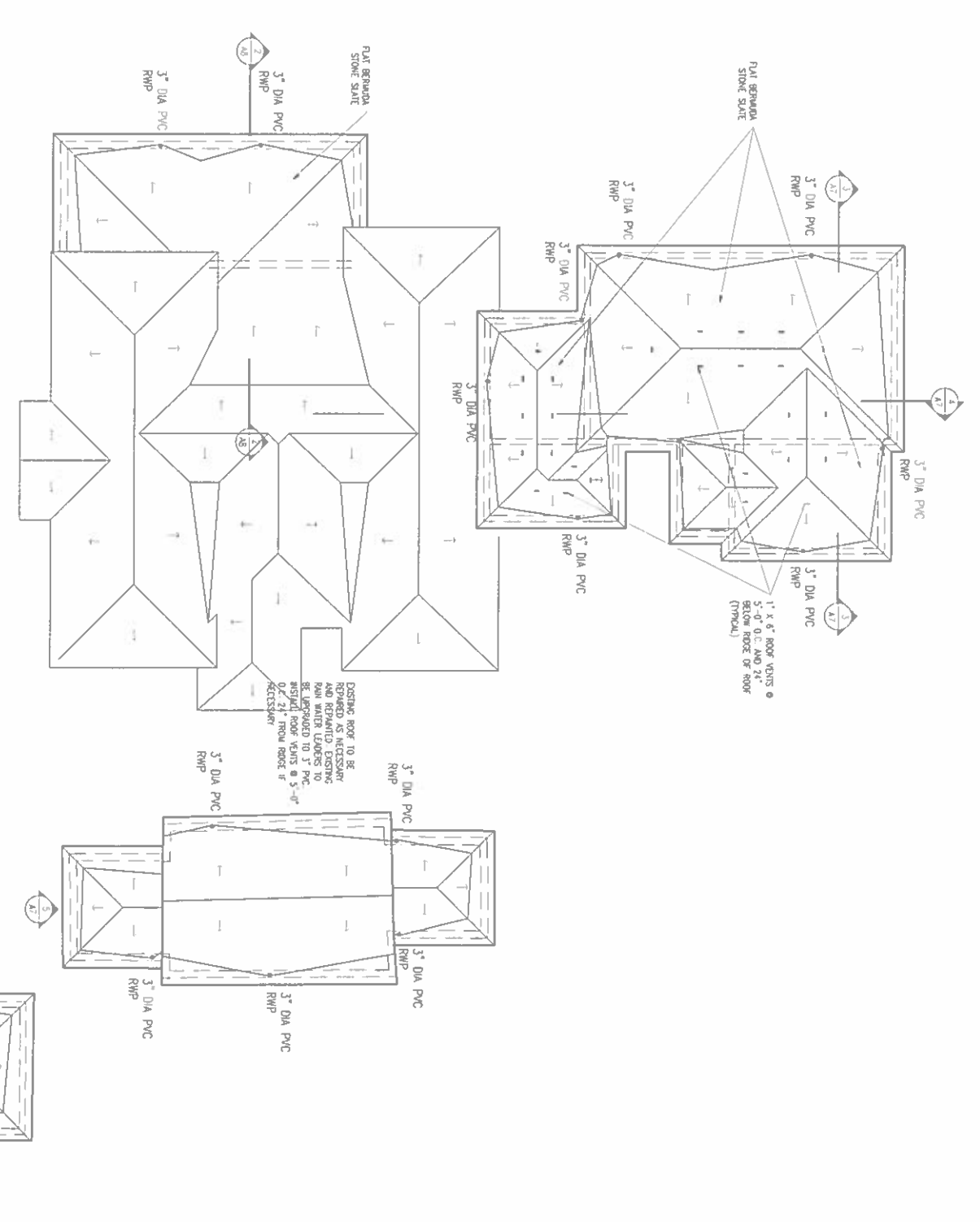


REV #	REV Date	REV Note



A1 FOUNDATION PLAN
SCALE: 1/4"=1'-0"

LEGEND:
 EXISTING WALLS
 NEW WALLS
 DIMENSION



A2 ROOF PLAN
SCALE: 1/8"=1'-0"

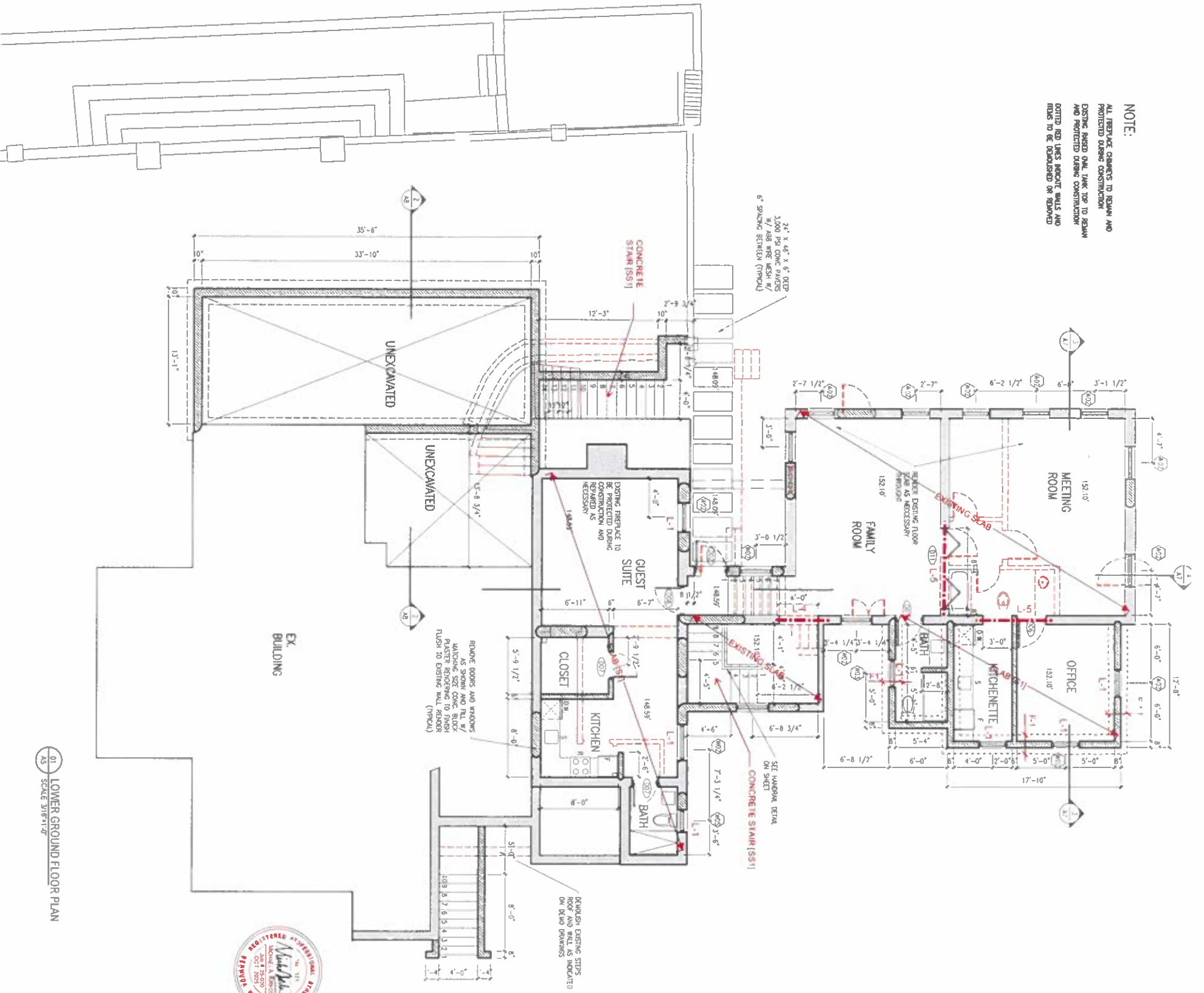
All roofs to be finished with a Department of Health approved potable water catchment coating.

THIS SHEET FOR ROOF DRAINAGE ONLY



REV #	REV. Date	REV. Notes

NOTE:
 ALL REPAIRS CHANGES TO BE MAINTAINED AND PROTECTED DURING CONSTRUCTION.
 EXISTING BASED ON THE TOP TO BE MAINTAINED AND PROTECTED DURING CONSTRUCTION.
 CONTROL JOINTS MUST BE MAINTAINED AND PROTECTED DURING CONSTRUCTION.
 CONTROL JOINTS MUST BE MAINTAINED AND PROTECTED DURING CONSTRUCTION.



01 LOWER GROUND FLOOR PLAN
 AS SCALE 3/8"=1'-0"

DOOR AND HARDWARE SCHEDULE

NUMBER	SIZE OF DOOR	OPENING SIZE	TYPE	SWING	THICKNESS	MATERIAL	FINISH	MATERIAL	FINISH	ROOM NAME/ LOCATION	Hardware				NOTES
											ENTRY LOCK	LEVER	PASSAGE	PRIVACY	
D1	3'-0" x 6'-8"	3'-5" x 6'-10"	X	1 3/4"	WD	STAIN	WD	ST		ENTRY	X	X	X	6 PANEL DOOR	
D2	3'-0" x 6'-8"	3'-5" x 6'-10"	X	1 3/4"	WD	STAIN	WD	PF		KITCHEN	X	X	X	DURCH PANEL DOOR	
D3	3'-0" x 6'-8"	3'-4" x 6'-10"	X	1 3/4"	WD	PF	WD	PF		ELECTRICAL ROOM	X	X	X	VENTED DOOR	
D4	2'-8" x 6'-8"	3'-0" x 6'-10"	X	1 3/8"	WD	PF	WD	PF		BEDROOMS	X	X	X	PANEL DOOR	
D5	11'-0" x 8'-8"	12'-0" x 8'-10"				VHNL	PF			UNMG-KITCHEN	X	X	X	IMPACT RATED SLIDING GLASS DOOR	
D6	2'-8" x 6'-8"	3'-0" x 6'-10"	X	1 3/8"	WD	PAINT	WD	PAINT		BEDROOMS	X	X	X	6 PANEL DOOR	
D7	2'-6" x 6'-8"	2'-10" x 6'-10"	X	1 3/8"	WD	PAINT	WD	PAINT		CLOSET-BATH	X	X	X	6 PANEL DOOR	
D8	DOUBLE 2'-6" x 6'-8"	5'-5" x 6'-10"	X	1 3/8"	WD	PF	WD	PF		CLOSETS	X	X	X	6 PANEL DOOR	
D9	DOUBLE 2'-0" x 6'-8"	4'-4" x 6'-10"	X	1 3/8"	WD	PF	WD	PF		CLOSET	X	X	X	6 PANEL DOOR	
D10	10'-0" x 6'-8"	10'-0" x 6'-8"		1 3/4"	V	STAIN				GARAGE	X	X	X	WOOD PANEL GARAGE DOOR	

WINDOW SCHEDULE

NUMBER	SIZE	OPENING SIZE	GLAZING	MATERIAL	FINISH	SHUTTERS	MATERIAL	FINISH	WINDOW	
									FRAME	FRAME
W1	3'-2" x 5'-8"	3'-6" x 5'-10"	LOW E	VHNL	WHITE	FACTORY	WHITE	PAINT	YES	DOUBLE HANG DOUBLE GLAZED
W2	2'-10" x 9'-2"	3'-4" x 9'-6"	LE	V	PF	PF	WD	PAINT	YES	DOUBLE HANG DOUBLE GLAZED
W3	2'-4" x 3'-8"	2'-8" x 3'-10"	LE	V	PF	PF	WD	PAINT	YES	DOUBLE HANG DOUBLE GLAZED
W4	DOUBLE 2'-10" x 5'-2"	7'-0" x 5'-6"	LE	V	PF	PF	WD	PAINT	YES	DOUBLE HANG DOUBLE GLAZED
W5	2'-0" x 3'-8"	2'-4" x 3'-10"	LE	V	PF	PF	WD	PAINT	YES	DOUBLE HANG DOUBLE GLAZED
W6	DOUBLE 4'-0" x 3'-6"	4'-6" x 3'-10"	LE	V	PF	PF	WD	PAINT	NO	TWO HANG 6 GROSS



MONTPELIER
 MIDDLE ROAD
 DEVONSHIRE, BERMUDA
FLOOR PLAN
LOWER GROUND

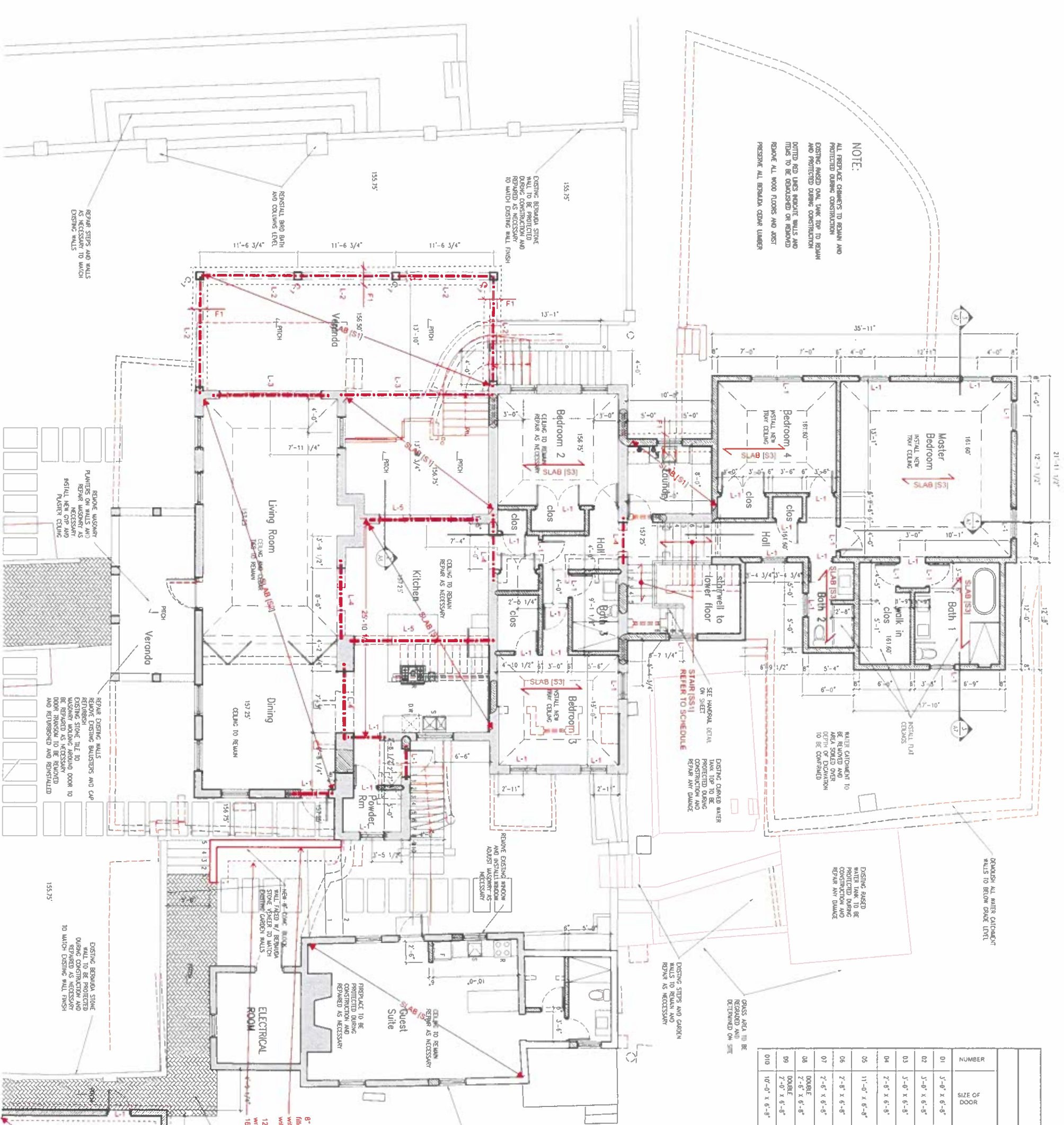
PROJECT NO: 21-029
 DRAWN BY: AAA
 DATE: MARCH 2022
 SCALE: 3/16"=1'-0"



All Drawing, Specifications, and Related Documents are copyright of the architect and must be returned upon request. Reproduction of Drawings, Specifications, and Related Documents in part or whole is forbidden without the architect's written permission.
 Contractors must check and verify all dimensions on job.



REV #	REV. Date	REV. Notes



NOTE:
 ALL REPAIRS CHANGES TO BE MADE AND PROTECTED DURING CONSTRUCTION
 EXISTING WOOD FLOOR TOP TO BE REPAIRED AND PROTECTED DURING CONSTRUCTION
 DO NOTED AND UNLESS INDICATED WALLS AND CEILING TO BE REPAIRED OR REMOVED
 REPAIR ALL WOOD FLOORS AND JOIST PRESERVE ALL BRICKLAIN CEILING LINEN

DOOR AND HARDWARE SCHEDULE

NUMBER	SIZE OF DOOR	OPENING SIZE	TYPE	SWING	THICKNESS	MATERIAL	FINISH	MATERIAL	FINISH	ROOM NAME/ LOCATION	ENTRY LOCK	LEVER	PASSAGE	PRIVACY	NOTES
D01	3'-0" x 6'-8"	3'-5" x 6'-10"	X	1 3/4"	NO	STAIN	NO	ST	ST	ENTRY	X				6 PANEL DOOR
D02	3'-0" x 6'-8"	3'-5" x 6'-10"	X	1 3/4"	NO	STAIN	NO	FR	FR	KITCHEN	X				DUTCH PANEL DOOR
D03	3'-0" x 6'-8"	3'-4" x 6'-10"	X	1 3/4"	NO	WOOD	NO	FR	FR	ELECTRICAL ROOM	X				VEHICLED DOOR
D04	2'-6" x 6'-8"	3'-0" x 6'-10"	X	1 3/8"	NO	WOOD	FR	FR	FR	BEDROOMS	X				PANEL DOOR
D05	11'-0" x 6'-8"	12'-0" x 6'-10"			NO					LIVING-HIDDEN	X				IMPACT RATED SLIDING GLASS DOOR
D06	2'-6" x 6'-8"	3'-0" x 6'-10"	X	1 3/8"	NO	PAINT	NO	PAINT	PAINT	BEDROOMS	X				6 PANEL DOOR
D07	2'-6" x 6'-8"	2'-10" x 6'-10"	X	1 3/8"	NO	PAINT	NO	PAINT	PAINT	BEDROOMS	X				6 PANEL DOOR
D08	2'-6" x 6'-8"	2'-6" x 6'-8"	X	1 3/8"	NO	PAINT	NO	PAINT	PAINT	CLOSET-BATH	X				6 PANEL DOOR
D09	DOUBLE 2'-0" x 6'-8"	5'-5" x 6'-10"	X	1 3/8"	NO	PAINT	NO	PAINT	PAINT	CLOSETS	X				6 PANEL DOOR
D10	10'-0" x 6'-8"	10'-0" x 6'-8"		1 3/4"	V	WOOD	P	NO	P	CLOSET	X				WOOD PANEL GARAGE DOOR

WINDOW SCHEDULE

NUMBER	SIZE	OPENING SIZE	GLAZING	MATERIAL	FINISH	SHUTTERS	MATERIAL	FINISH
W1	3'-2" x 5'-8"	3'-6" x 5'-10"	LOW E	WHITE	FACTORY WHITE	YES	WOOD PAINT	DOUBLE HUNG DOUBLE GLAZED
W2	2'-10" x 5'-2"	3'-4" x 5'-6"	LE	V	FR	YES	WOOD PAINT	DOUBLE HUNG DOUBLE GLAZED
W3	2'-4" x 3'-6"	2'-8" x 3'-10"	LE	V	FR	YES	WOOD PAINT	DOUBLE HUNG DOUBLE GLAZED
W4	DOUBLE 2'-10" x 5'-2"	7'-0" x 5'-6"	LE	V	FR	YES	WOOD PAINT	DOUBLE HUNG DOUBLE GLAZED
W5	2'-0" x 3'-6"	2'-4" x 3'-10"	LE	V	FR	YES	WOOD PAINT	DOUBLE HUNG DOUBLE GLAZED
W6	DOUBLE 4'-0" x 3'-5"	4'-6" x 3'-10"	LE	V	FR	NO	WOOD PAINT	TOP HUNG 5 GLASS

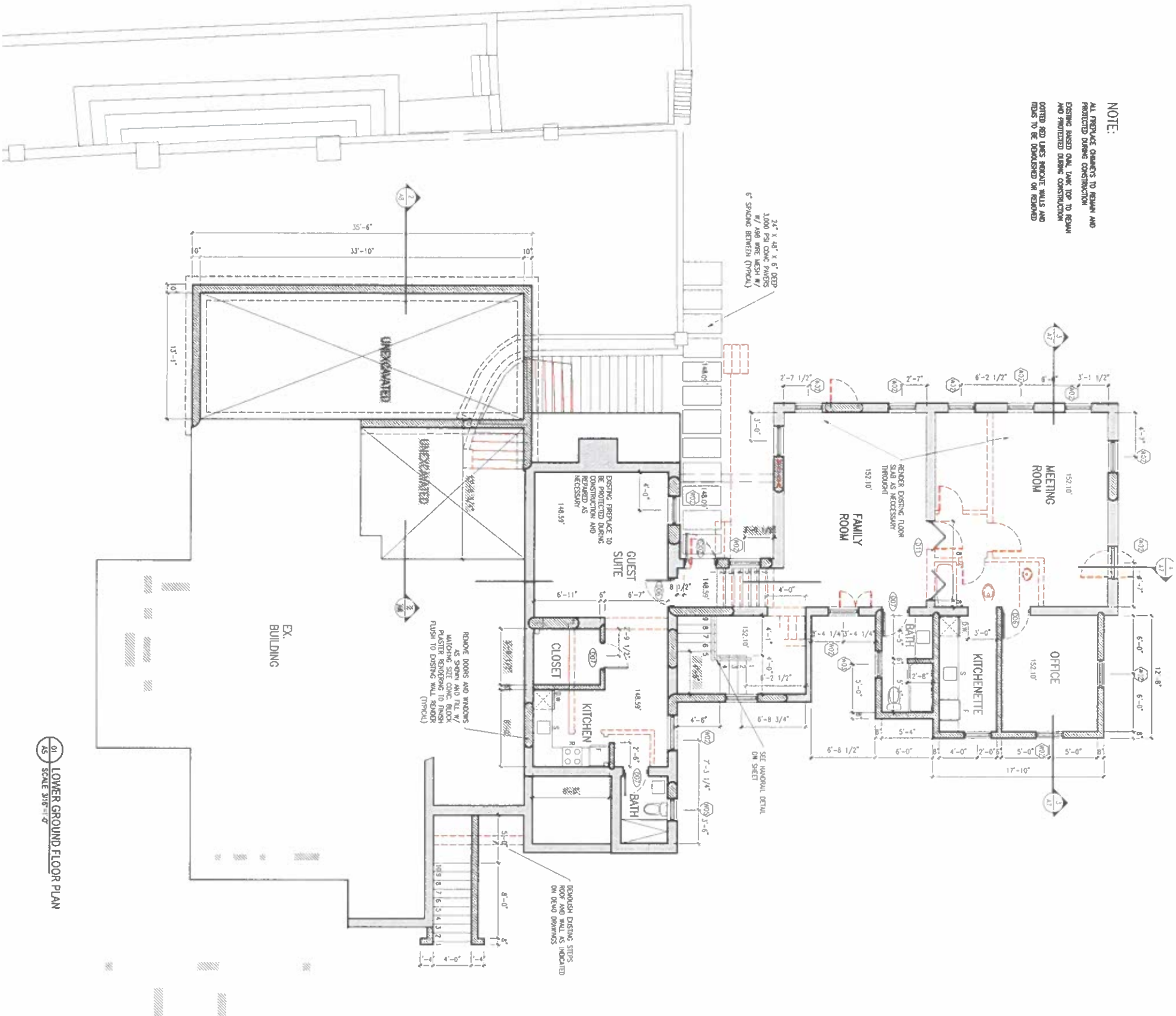
NOTE:
 1. REFER TO DWG. S.1 FOR STRUCTURAL NOTES

8" thick wall, 4'-0" high max filled with concrete reinforced with 1/2" @ 16" c/c vertical bars with 16" bar band
 12" thick x 2'-0" wide footing reinforced with 3-1/2" longitudinal bars and 1/2" @ 16" c/c transverse bars (1'5" from top)
 5" x 10" c/c. PARTIAL IN HERSEKING CENTER SET IN BLACK SAND



AS SCALE: 3/8"=1'-0"

NOTE:
 ALL PRELACE CHANGES TO REMAIN AND PROTECTED DURING CONSTRUCTION. EXISTING REED GYM, LNK 100 TO REMAIN AND PROTECTED DURING CONSTRUCTION. OUTLET AND LINES REMOVE WALLS AND CEILING TO BE DEMOLISHED OR REMOVED.



01 LOWER GROUND FLOOR PLAN
 AS SCALE 3/8"=1'-0"

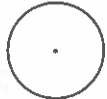
DOOR AND HARDWARE SCHEDULE

DOORS				FRAME		LOCATION		Hardware				NOTES	
NUMBER	SIZE OF DOOR	OPENING SIZE	TYPE	SWING	THICKNESS	MATERIAL	FINISH	ROOM NAME/LOCATION	ENTRY LOCK	LEVER	PASSAGE	PRIVACY	NOTES
01	3'-0" x 6'-8"	3'-5" x 6'-10"	X	1 3/4"	NO	SLIM	ST	ENTR	X				6 PANEL DOOR
02	3'-0" x 6'-8"	3'-5" x 6'-10"	X	1 3/4"	NO	SLIM	SP	KITCHEN	X				6 PANEL DOOR
03	3'-0" x 6'-8"	3'-4" x 6'-10"	X	1 3/4"	NO	WOOD	PF	ELECTRICAL ROOM	X				VERTICAL DOOR
04	2'-8" x 6'-8"	3'-0" x 6'-10"	X	1 3/8"	NO	WOOD	PF	BEHIND ROOM	X				PANEL DOOR
05	1'-0" x 6'-8"	12'-0" x 6'-10"				WHL	PF	LINK-KITCHEN	X				APPLY RATED SLIDING GLASS DOOR
06	2'-8" x 6'-8"	3'-0" x 6'-10"	X	1 3/8"	NO	PAINT	NO	BEHIND ROOM	X				6 PANEL DOOR
07	2'-6" x 6'-8"	2'-10" x 6'-10"	X	1 3/8"	NO	PAINT	NO	GUEST-BATH	X				6 PANEL DOOR
08	2'-6" x 6'-8"	3'-5" x 6'-10"	X	1 3/8"	NO	PAINT	NO	CLOSET	X				6 PANEL DOOR
09	DOUBLE 2'-0" x 6'-8"	4'-4" x 6'-10"	X	1 3/8"	NO	WOOD	P	CLOSET	X				6 PANEL DOOR
10	10'-0" x 6'-8"	10'-0" x 6'-9"				1 3/4"	V	SLIM					WOOD PANEL GLASS DOOR

WINDOW SCHEDULE

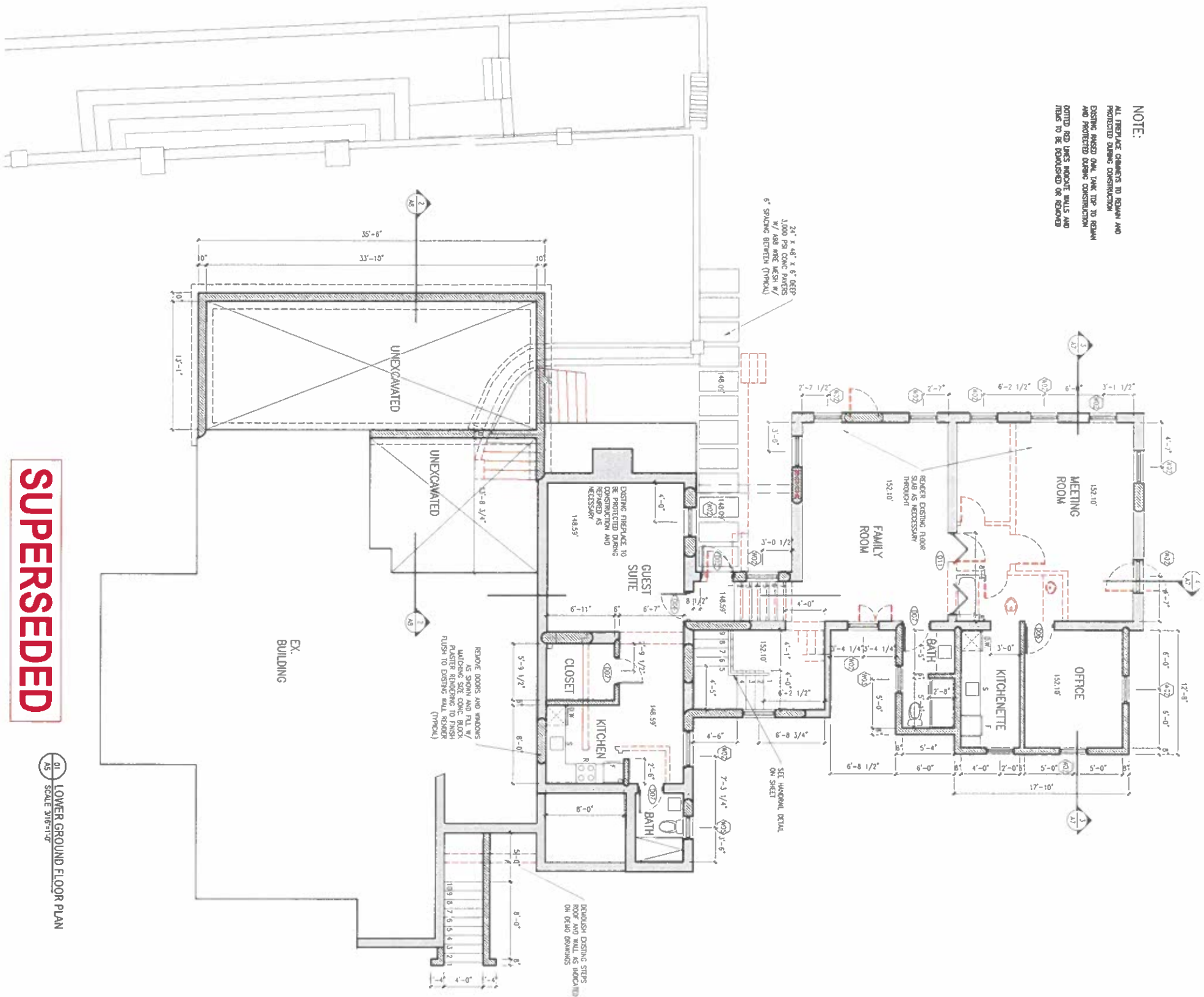
WINDOW		FRAME		GLAZING		FINISH		SHUTTERS		MATERIAL		FINISH	
NUMBER	SIZE	OPENING SIZE	MATERIAL	FINISH	SHUTTERS	MATERIAL	FINISH	MATERIAL	FINISH	MATERIAL	FINISH	MATERIAL	FINISH
W1	3'-2" x 5'-6"	3'-6" x 5'-10"	LOW E	WHL	FACTORY	YES	WOOD	PAINT	DOUBLE HANG DOUBLE GLAZED				
W2	2'-10" x 5'-2"	3'-4" x 5'-6"	LOW E	WHL	FACTORY	YES	WOOD	PAINT	DOUBLE HANG DOUBLE GLAZED				
W3	2'-4" x 3'-6"	2'-8" x 3'-10"	LOW E	WHL	FACTORY	YES	WOOD	PAINT	DOUBLE HANG DOUBLE GLAZED				
W4	DOUBLE 2'-10" x 5'-2"	7'-0" x 5'-6"	LOW E	WHL	FACTORY	YES	WOOD	PAINT	DOUBLE HANG DOUBLE GLAZED				
W5	2'-0" x 3'-6"	2'-4" x 3'-10"	LOW E	WHL	FACTORY	YES	WOOD	PAINT	DOUBLE HANG DOUBLE GLAZED				
W6	DOUBLE 4'-0" x 3'-6"	4'-6" x 3'-10"	LOW E	WHL	FACTORY	YES	WOOD	PAINT	DOUBLE HANG DOUBLE GLAZED				

REVISED PLAN
 DATE: 30 Jan 2026



REV #	REV. DATE	REV. NOTES

NOTE:
 ALL PREPLACE CHAMBERS TO REMAIN AND PROTECTED DURING CONSTRUCTION. EXISTING BASED ON JUMP TO TO REMAIN AND PROTECTED DURING CONSTRUCTION. DOTTED RED LINES INDICATE WALLS AND CEILING TO BE DEMOLISHED OR REMOVED.



SUPERSEDED

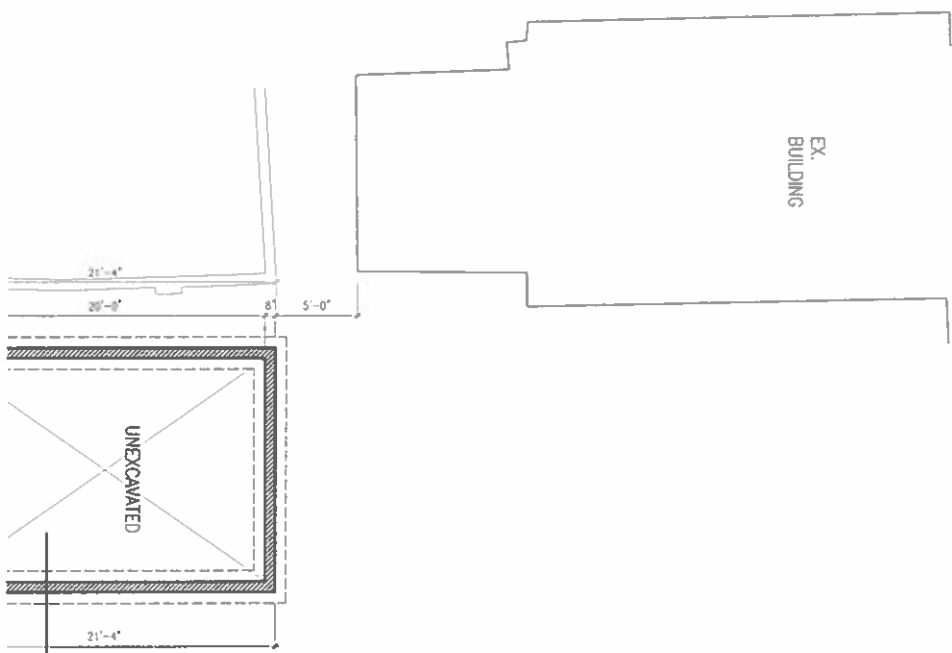
01 LOWER GROUND FLOOR PLAN
 SCALE 3/8" = 1'-0"

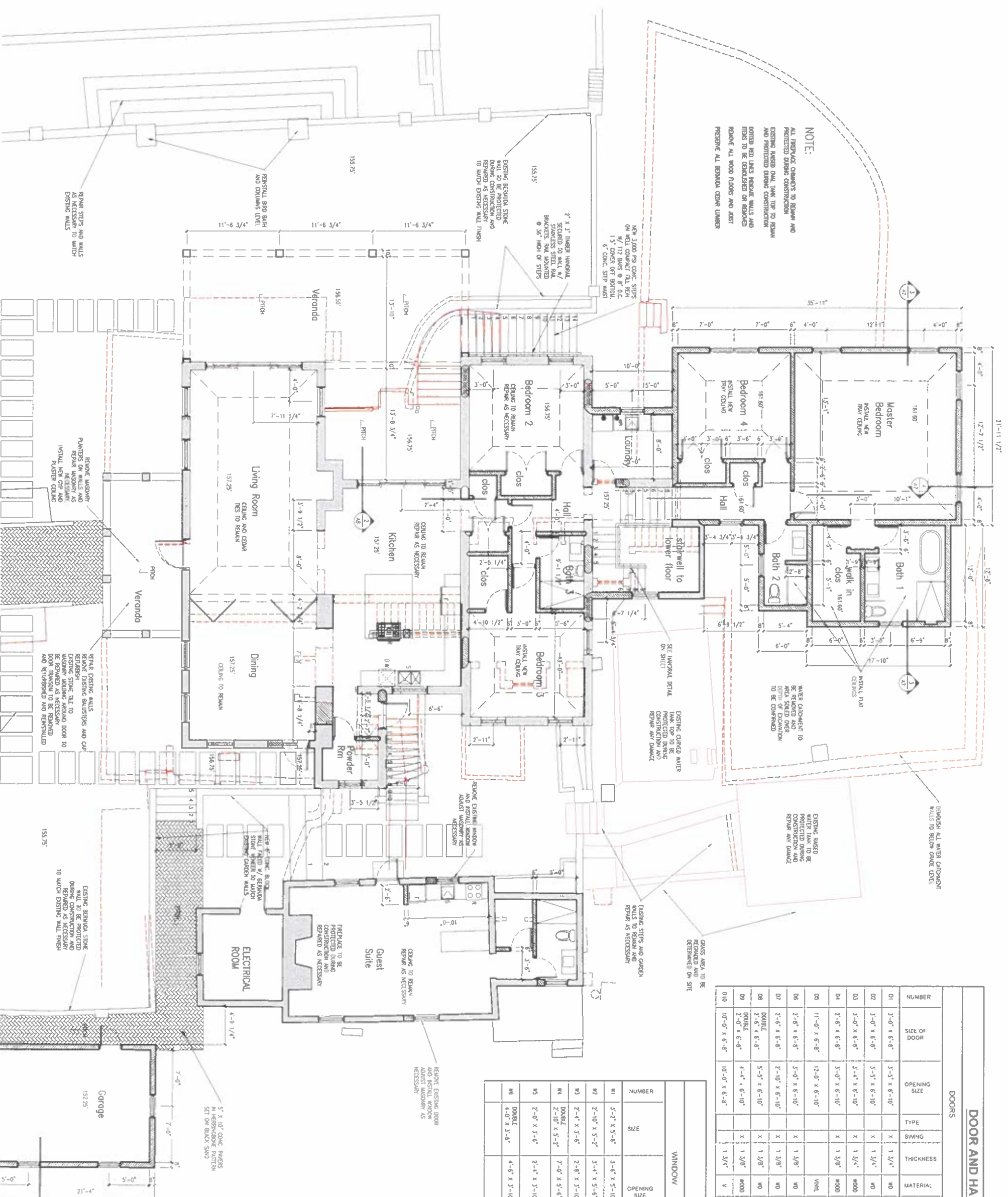
DOOR AND HARDWARE SCHEDULE

NUMBER	SIZE OF DOOR	OPENING SIZE	TYPE	SWING	THICKNESS	MATERIAL	FINISH	FRAME		LOCATION	HARDWARE				NOTES
								MATERIAL	FINISH		ENTRY LOCK	LEVER	PASSAGE	PRIVACY	
01	3'-0" x 6'-8"	3'-5" x 6'-10"	X	1 1/4"	WD	STAIN	WD	ST		ENTR	X	X	X	6 PANEL DOOR	
02	3'-0" x 6'-8"	3'-5" x 6'-10"	X	1 1/4"	WD	STAIN	WD	PF		KITCHEN	X			DINING PANEL DOOR	
03	3'-0" x 6'-8"	3'-4" x 6'-10"	X	1 1/4"	WD	STAIN	WD	PF		ELECTRICAL ROOM	X			VERTICAL DOOR	
04	2'-8" x 6'-8"	3'-0" x 6'-10"	X	1 1/2"	WOOD	PF	WOOD	PF		BEDROOMS	X	X		PANEL DOOR	
05	11'-0" x 6'-8"	12'-0" x 6'-10"			VHNC	PF				UNING-KITCHEN	X	X	X	APPLY RATED SLIDING GLASS DOOR	
06	2'-8" x 6'-8"	3'-0" x 6'-10"	X	1 1/2"	WD	PAINT	WD	PAINT		BEDROOMS		X	X	6 PANEL DOOR	
07	2'-6" x 6'-8"	2'-10" x 6'-10"	X	1 1/2"	WD	PAINT	WD	PAINT		CLOSET-BATH	X	X		6 PANEL DOOR	
08	2'-6" x 6'-8"	3'-5" x 6'-10"	X	1 1/2"	WD	PAINT	WD	PAINT		CLOSETS	X			6 PANEL DOOR	
09	2'-0" x 6'-8"	4'-4" x 6'-10"	X	1 1/2"	WOOD	PF	WD	PF		CLOSET		X		6 PANEL DOOR	
010	10'-0" x 6'-8"	10'-0" x 6'-8"		1 1/4"	V	STAIN	WD			CORRAGE				WOOD PANEL GLAZED DOOR	

WINDOW SCHEDULE

NUMBER	SIZE	OPENING SIZE	GLAZING	FRAME		FINISH	SHUTTERS	MATERIAL	FINISH
				MATERIAL	FINISH				
W1	3'-2" x 5'-8"	3'-6" x 5'-10"	LOW E	VHNC	WHITE	FACTORY	YES	WOOD	PAINT
W2	2'-10" x 5'-2"	3'-4" x 5'-6"	LE	V	WHITE	FW	YES	WOOD	PAINT
W3	2'-6" x 3'-6"	2'-8" x 3'-10"	LE	V	FW	FW	YES	WOOD	PAINT
W4	DOUBLE 2'-10" x 5'-2"	7'-0" x 5'-6"	LE	V	FW	FW	YES	WOOD	PAINT
W5	2'-0" x 3'-6"	2'-4" x 3'-10"	LE	V	FW	FW	YES	WOOD	PAINT
W6	DOUBLE 4'-0" x 3'-6"	4'-6" x 3'-10"	LE	V	FW	FW	NO	WOOD	PAINT





DOOR AND HARDWARE SCHEDULE

DOORS	FRAME	LOCATION	Hardware	NOTES
D1	3'-0" x 6'-8"	3'-5" x 6'-10"	NO	6 PANEL DOOR
D2	3'-0" x 6'-8"	3'-5" x 6'-10"	NO	DUTCH PANEL DOOR
D3	3'-0" x 6'-8"	3'-4" x 6'-10"	NO	6 PANEL DOOR
D4	2'-6" x 6'-8"	3'-0" x 6'-10"	NO	PANEL DOOR
D5	11'-0" x 6'-8"	12'-0" x 6'-10"	NO	IMPACT RATED SLIDING GLASS DOOR
D6	2'-6" x 6'-8"	3'-0" x 6'-10"	NO	6 PANEL DOOR
D7	2'-6" x 6'-8"	2'-10" x 6'-10"	NO	6 PANEL DOOR
D8	2'-6" x 6'-8"	5'-5" x 6'-10"	NO	6 PANEL DOOR
D9	2'-0" x 6'-8"	4'-4" x 6'-10"	NO	6 PANEL DOOR
D10	10'-0" x 6'-8"	10'-0" x 6'-8"	NO	WOOD PANEL CLOSET DOOR

WINDOW SCHEDULE

WINDOW	FRAME	LOCATION	Hardware	NOTES
W1	3'-2" x 5'-6"	3'-4" x 5'-10"	NO	DOUBLE HUNG DOUBLE GLAZED
W2	2'-10" x 5'-2"	3'-4" x 5'-6"	NO	DOUBLE HUNG DOUBLE GLAZED
W3	2'-4" x 3'-6"	2'-8" x 3'-10"	NO	DOUBLE HUNG DOUBLE GLAZED
W4	DOUBLE 2'-10" x 5'-2"	7'-0" x 5'-6"	NO	DOUBLE HUNG DOUBLE GLAZED
W5	2'-0" x 3'-6"	2'-4" x 3'-10"	NO	DOUBLE HUNG DOUBLE GLAZED
W6	DOUBLE 4'-0" x 3'-6"	4'-6" x 3'-10"	NO	TOP HUNG 6 PANELS

REVISED PLAN

DATE: 30 Jan 2026



A6r-10

MONTPELIER

MIDDLE ROAD
DEVONSHIRE, BERMUDA

GROUND FLOOR PLAN

PROJECT NO: 21-029
 DRAWN BY: AXK
 DATE: Sep. 01, 1999
 SCALE: 3/16" = 1'-0"

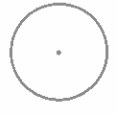
ENTASIS

Architecture

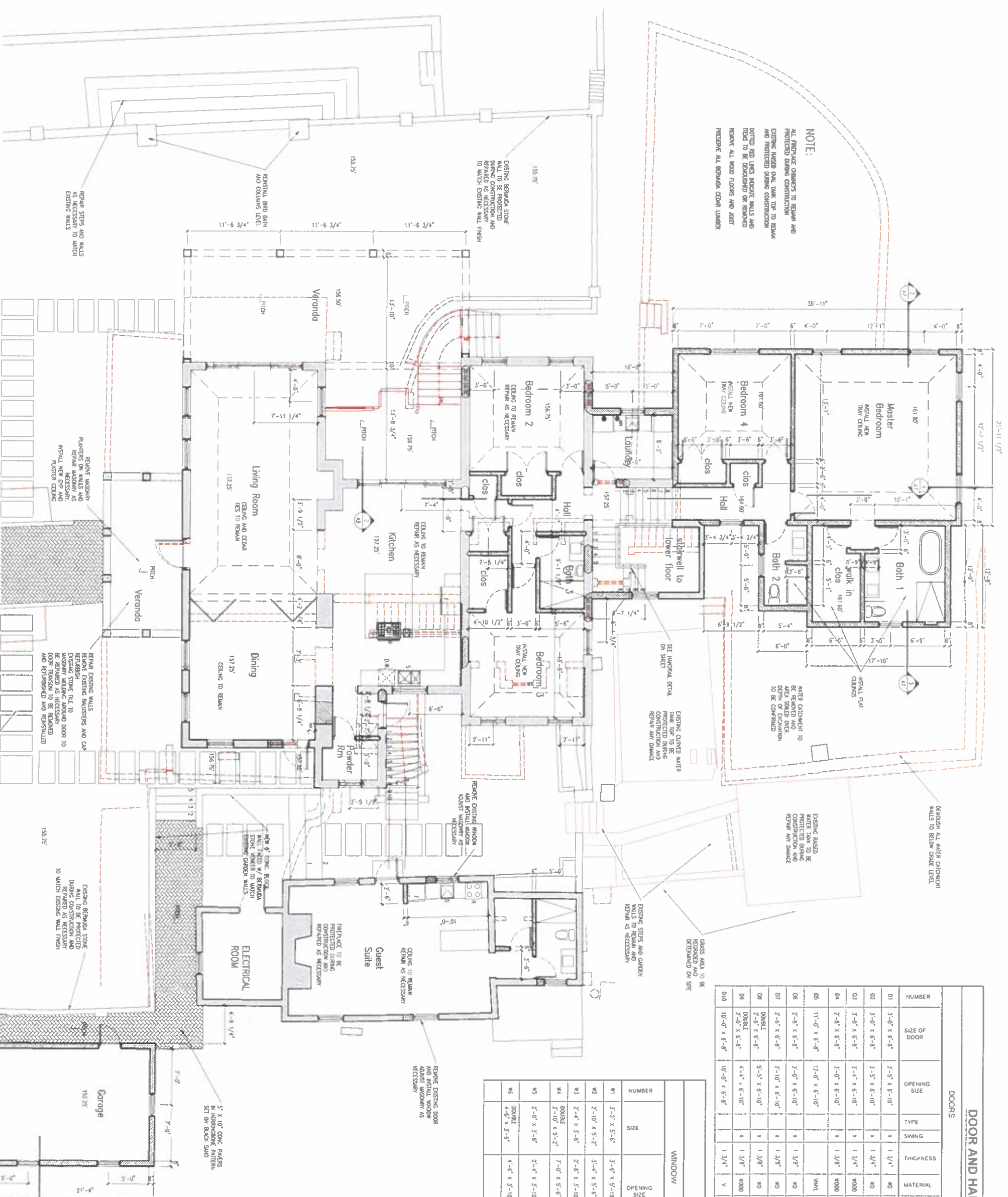
27 FRONT STREET - HAMILTON BERMUDA
 TEL: 461-292-8229 - FAX: 461-298-2615

All Drawings, Specifications, and Related Documents are copyright of the architect and must be returned upon request. Reproduction of Drawings, Specifications, and Related Documents in part or whole is forbidden without the architect's written permission.

Contractors must check and verify all dimensions on job.



REV #	REV DATE	REV NOTES



NOTE:
 ALL REMOVE ELEMENTS TO REMAIN AND PROTECTED DURING CONSTRUCTION
 EXISTING BASED ON WALL TOP TO REMAIN AND PROTECTED DURING CONSTRUCTION
 DOTTED RED LINES INDICATE WALLS AND TRAYS TO BE DEMOLISHED OR REWORKED REMOVE ALL WOOD FLOORS AND JOIST PRESERVE ALL BERBERA CEILING LUMBER

DOOR AND HARDWARE SCHEDULE																			
DOORS					FRAME					LOCATION					Hardware				
NUMBER	SIZE OF DOOR	OPENING SIZE	TYPE	SWING	THICKNESS	MATERIAL	FINISH	MATERIAL	FINISH	ROOM NAME / LOCATION	ENTRY LOCK	LEVEL	PASSAGE	PRIVACY	NOTES				
D1	3'-0" x 6'-8"	3'-5" x 6'-10"	X	1 3/4"	NO	STAIN	NO	ST		ENTRY	X				6 PANEL DOOR				
D2	3'-0" x 6'-8"	3'-5" x 6'-10"	X	1 3/4"	NO	STAIN	NO	PF		KITCHEN	X				BOTH PANEL DOOR				
D3	3'-0" x 6'-8"	3'-4" x 6'-10"	X	1 3/4"	NO	STAIN	NO	PF		ELECTRICAL ROOM	X				VORTEX DOOR				
D4	2'-6" x 6'-8"	3'-0" x 6'-10"	X	1 3/8"	NO	WOOD	PF	WOOD	PF	BEDROOMS	X				PANEL DOOR				
D5	11'-0" x 6'-8"	12'-0" x 6'-10"				WHL	PF			LIVING-KITCHEN	X				IMPACT RATED SOUND GLASS DOOR				
D6	2'-6" x 6'-8"	3'-0" x 6'-10"	X	1 3/8"	NO	PAINT	NO	PAINT		BEDROOMS	X				6 PANEL DOOR				
D7	2'-6" x 6'-8"	2'-10" x 6'-10"	X	1 3/8"	NO	PAINT	NO	PAINT		GUEST-BATH	X				6 PANEL DOOR				
D8	2'-6" x 6'-8"	2'-5" x 6'-10"	X	1 3/8"	NO	PAINT	NO	PAINT		CLOSET-BATH	X				6 PANEL DOOR				
D9	2'-6" x 6'-8"	4'-4" x 6'-10"	X	1 3/8"	NO	WOOD	P	WOOD	P	CLOSET	X				6 PANEL DOOR				
D10	10'-0" x 6'-8"	10'-0" x 6'-8"		1 3/4"	V	STAIN				GARAGE					WOOD PANEL GARAGE DOOR				

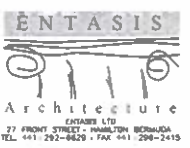
WINDOW SCHEDULE									
WINDOW					FRAME				
NUMBER	SIZE	OPENING SIZE	GLAZING	MATERIAL	FINISH	SHUTTERS	MATERIAL	FINISH	NOTES
W1	3'-7" x 5'-6"	3'-6" x 5'-10"	LOW E	WHL	FACTORY WHITE	YES	WOOD	PAINT	DOUBLE HUNG DOUBLE GLAZED
W2	2'-10" x 5'-2"	3'-4" x 5'-6"	LE	V	FW	YES	WOOD	PAINT	DOUBLE HUNG DOUBLE GLAZED
W3	2'-4" x 3'-6"	2'-6" x 3'-10"	LE	V	FW	YES	WOOD	PAINT	DOUBLE HUNG DOUBLE GLAZED
W4	2'-10" x 3'-2"	2'-0" x 3'-6"	LE	V	FW	YES	WOOD	PAINT	DOUBLE HUNG DOUBLE GLAZED
W5	2'-0" x 3'-6"	2'-4" x 3'-10"	LE	V	FW	YES	WOOD	PAINT	DOUBLE HUNG DOUBLE GLAZED
W6	4'-0" x 3'-5"	4'-6" x 3'-10"	LE	V	FW	NO	WOOD	PAINT	TOP HUNG 6 PANELS

SUPERSEDED

01 GROUND FLOOR PLAN
 SCALE 3/8"=1'-0"

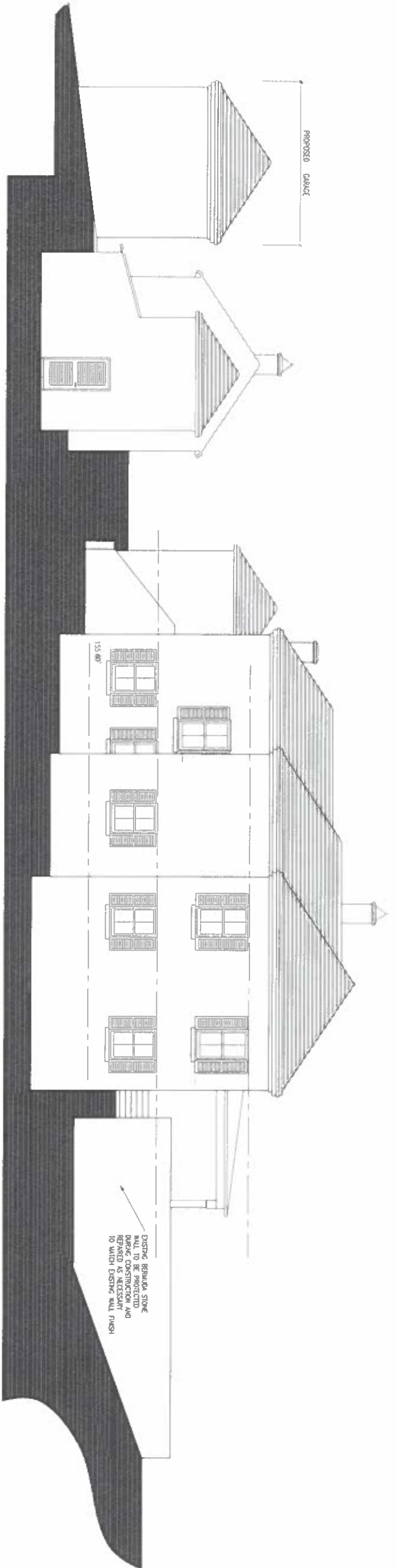
MONTPELIER
 MIDDLE ROAD
 DEVONSHIRE, BERMUDA
GROUND FLOOR PLAN
 A6r-10

PROJECT NO: 21 029
 DRAWN BY: XXX
 DATE: Sep. 01, 1999
 SCALE: 3/8"=1'-0"

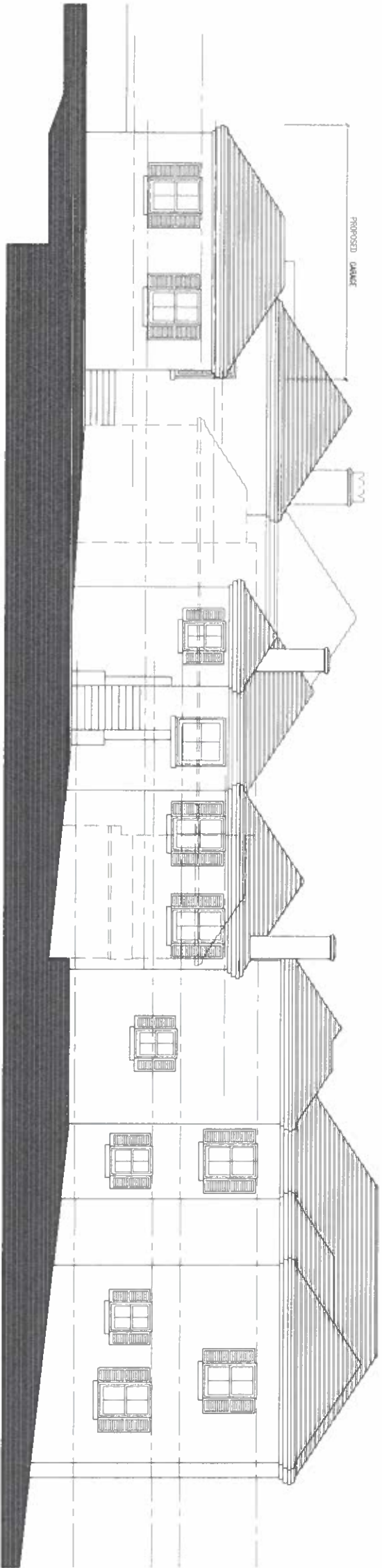


All Drawing, Specifications, and Related Documents are copyright of the architect and shall remain the property of the architect. No reproduction of Drawings, Specifications, and Related Documents in part or whole is permitted without the architect's written permission.
 Contractors must check and verify all dimensions on job.

REV #	REV Date	REV Notes



01 NORTH ELEVATION
A9 SCALE 3/8"=1'-0"



02 EAST ELEVATION
A8 SCALE 3/8"=1'-0"

REVISED PLAN
DATE: 30 Jan 2026

NOTE:

ALL REBAR/CLASH CHANGES TO ROOMS AND
PROTECTED DURING CONSTRUCTION
DISTING MARKED ONLY. MARK TOP TO ROOM
AND FINISHED BOUND CONSTRUCTION

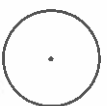


A10r-10
MONTPELIER
MIDDLE ROAD
DEVONSHIRE, BERMUDA
NORTH - EAST
ELEVATIONS

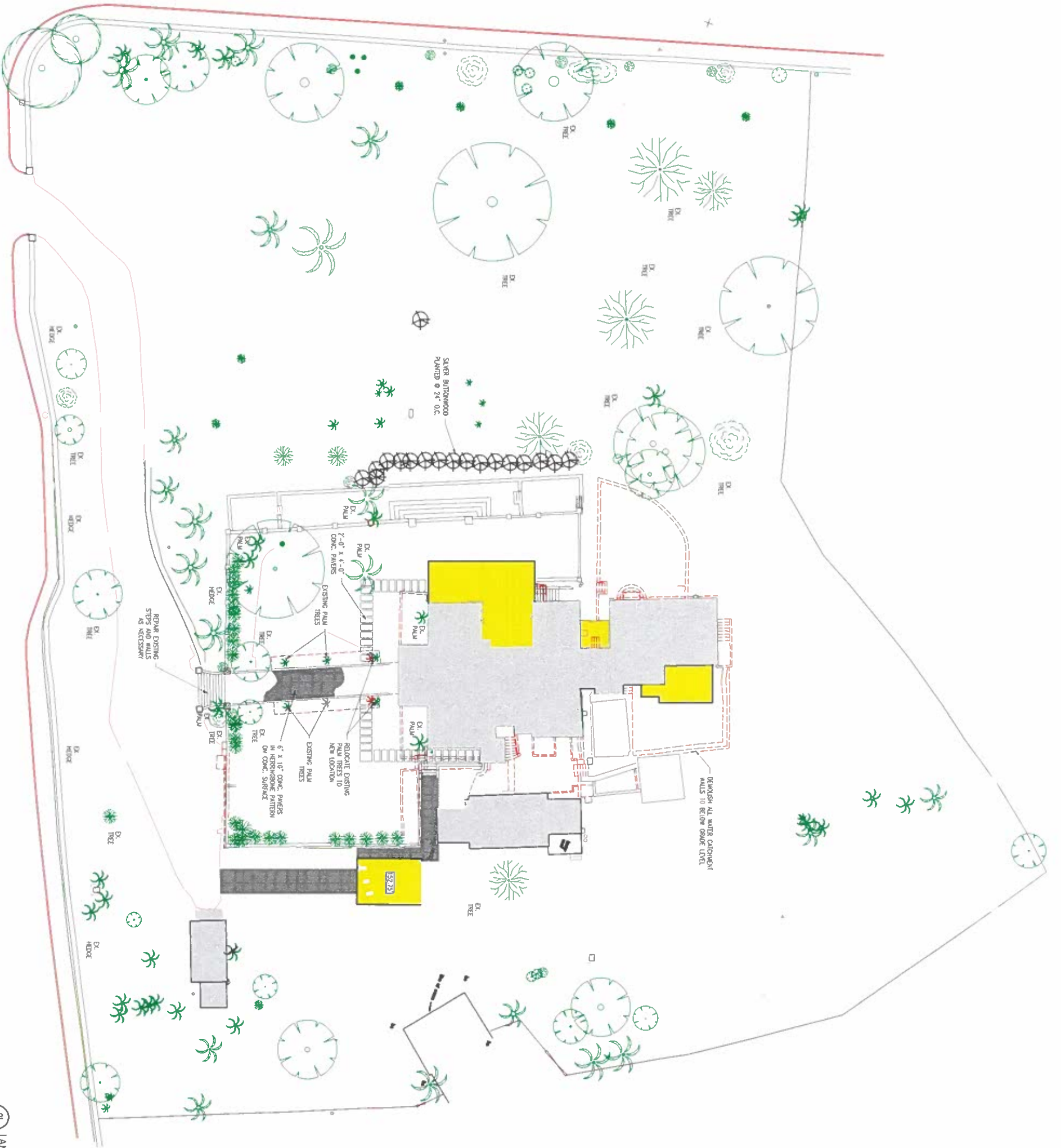
PROJECT NO: 21'029'
DRAWN BY: AAA
DATE: MARCH 2022
SCALE: 1/4"=1'-0"

ENTASIS
Architecture
ESTABLISHED LTD
27 FRONT STREET - HAMILTON BERMUDA
TEL: 441-292-8829 • FAX: 441-298-2415

All Drawing, Specifications, and Related Documents are copyright of the architect and must be returned upon request. Reproduction of Drawings, Specifications, and Related Documents in part or whole is forbidden without the architect's written permission.
Contractors must check and verify all dimensions on site.



REV #	REV. DATE	REV. NOTES



1/2" = 1'-0"
 LANDSCAPE PLAN
 SCALE 1/8" = 1'-0"

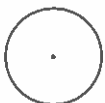


MONTPELIER
 MIDDLE ROAD
 DEVONSHIRE, BERMUDA
LANDSCAPE PLAN
A2R-10

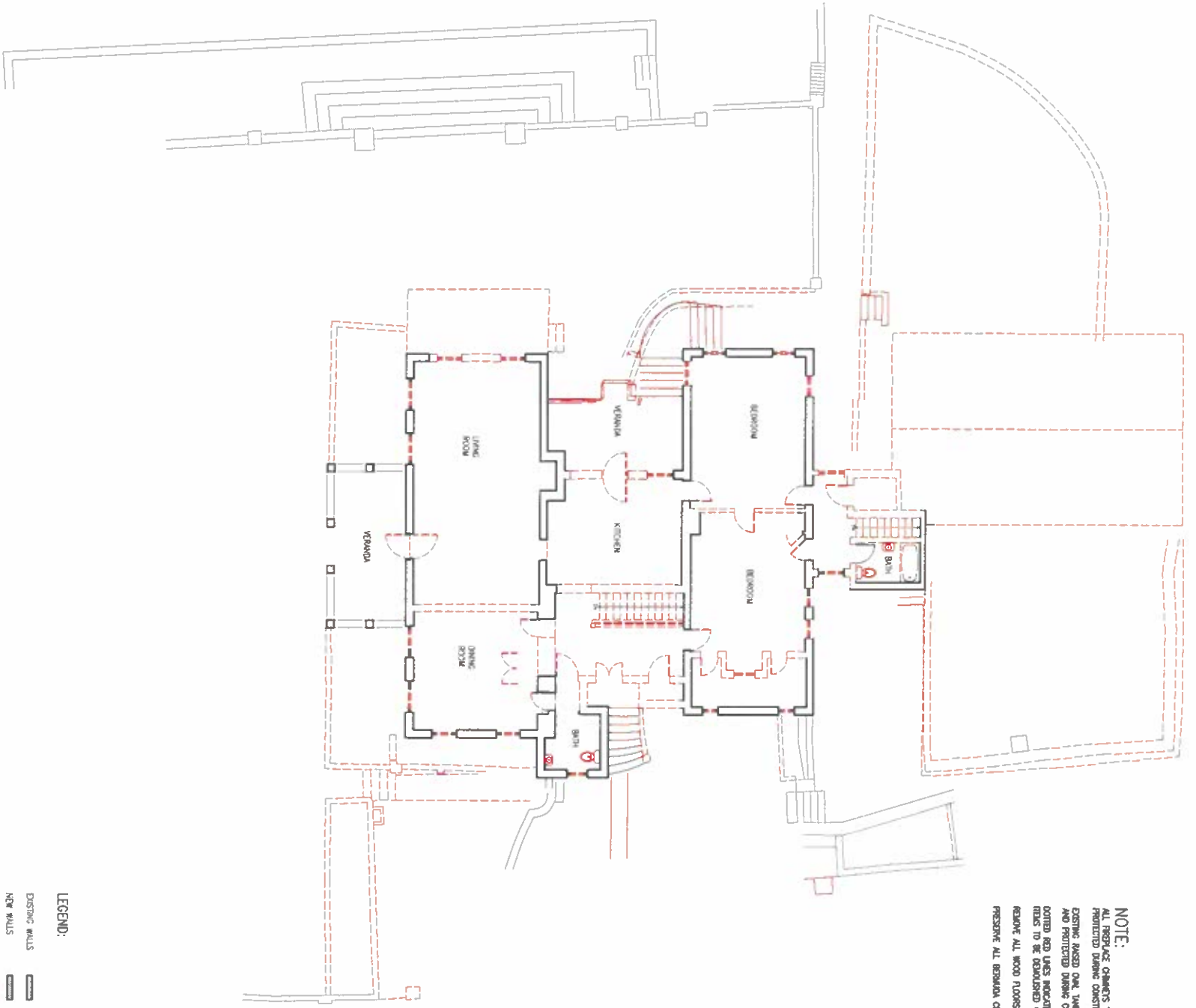
PROJECT NO: 21-029
 DRAWN BY: AAA
 DATE: MARCH 2022
 SCALE: AS SHOWN



All Drawings, Specifications, and Related Documents are copyright of the architect and must be returned upon request. Reproduction of Drawings, Specifications, and Related Documents in part or whole is forbidden without the architect's written permission.
 Contractors must check and verify all dimensions on job.



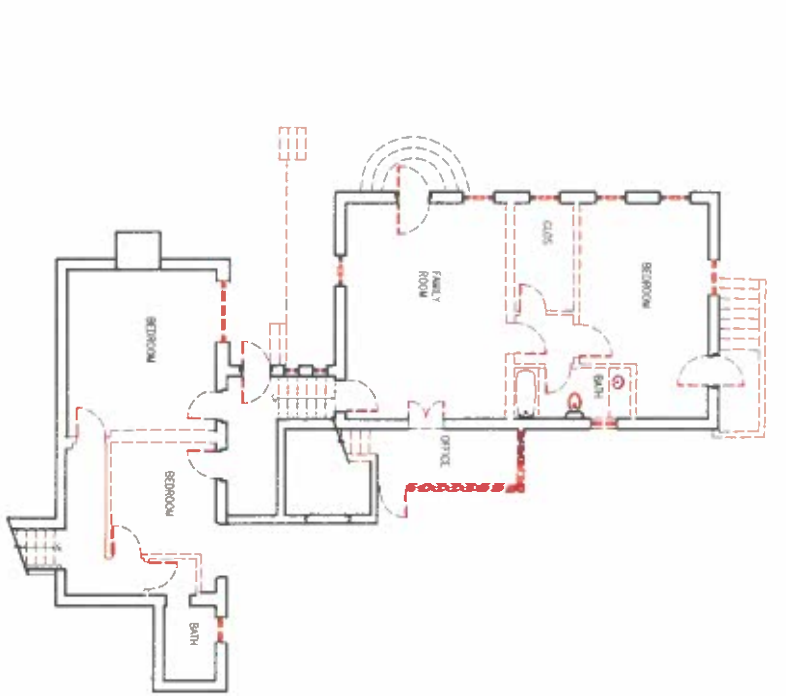
REV	REV. DATE	REV. NOTES



01 DEMOLITION GROUND FLOOR PLAN
SCALE 1/8"=1'-0"

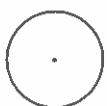
LEGEND:
 EXISTING WALLS
 NEW WALLS
 DEMOLITION

NOTE:
 ALL SCHED. JOIST CHANGES TO SPAN AND PROTECTED DRAINAGE CONSTRUCTION
 EXISTING RAISED OAK TIMBER TOP TO REMAIN AND PROTECTED DRAINAGE CONSTRUCTION
 COATED AND LINES REMOVE WALLS AND CEILING TO BE DEMOLISHED OR REMOVED
 REMOVE ALL WOOD FLOORS AND JOIST
 PRESERVE ALL BERMUDA CEILING LINERS

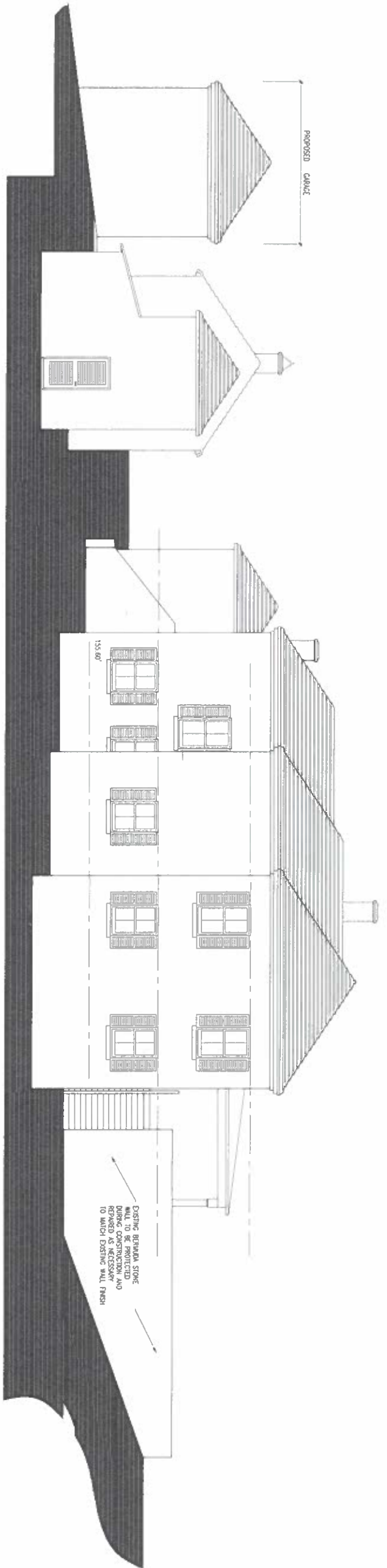


02 DEMOLITION LOWER GROUND FLOOR PLAN
SCALE 1/8"=1'-0"

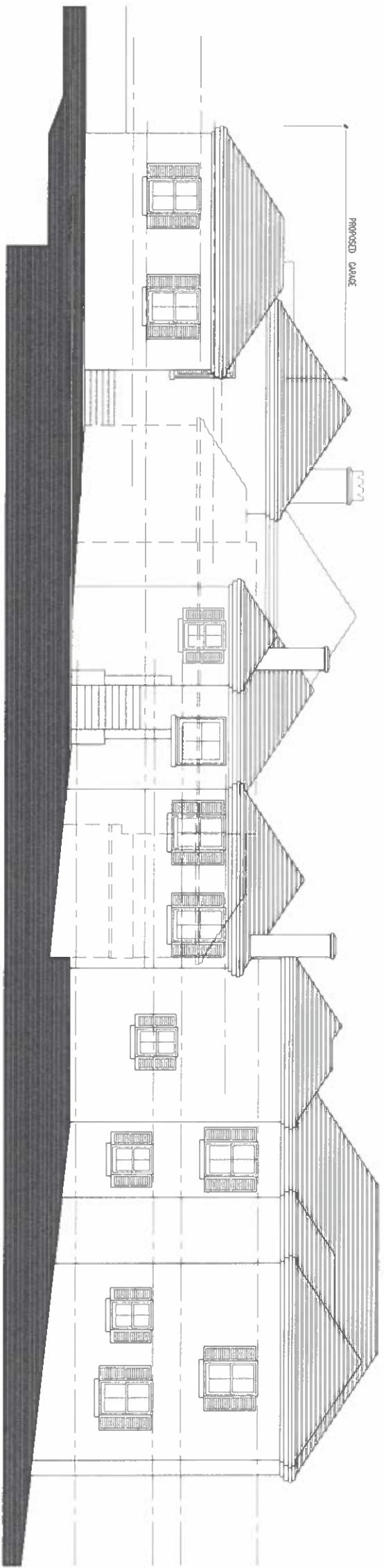
LEGEND:
 EXISTING WALLS
 NEW WALLS
 DEMOLITION



REV #	REV Date	REV Notes



01 NORTH ELEVATION
SCALE 3/16"=1'-0"



02 EAST ELEVATION
SCALE 3/16"=1'-0"

REVISED PLAN
DATE: 30 Jan 2026

NOTE:
ALL FINISHES CORRECTED TO BEHMAN AND
PROTECTED DURING CONSTRUCTION
EXISTING BASED ON THE TYPICAL TO BEHMAN
AND PROTECTED DURING CONSTRUCTION



A10r-10
MONTPELIER
MIDDLE ROAD
DEVONSHIRE, BERMUDA
NORTH-EAST
ELEVATIONS

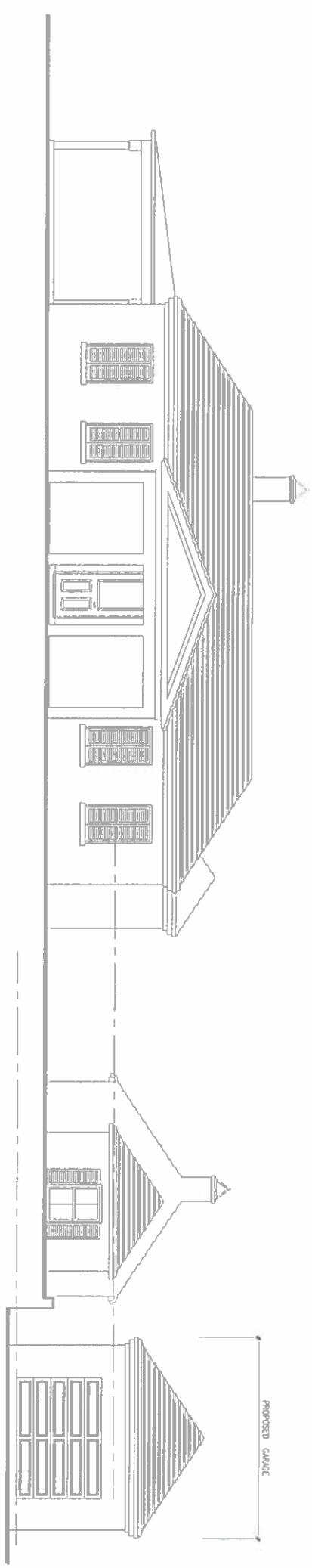
PROJECT NO: 21 029
DRAWN BY: AAA
DATE: MARCH 2022
SCALE: 1/4"=1'-0"

ENTASIS
Architecture
ENTASIS LTD
27 FRONT STREET - HAMILTON BERMUDA
TEL: 441-292-8828 • FAX: 441-298-2415

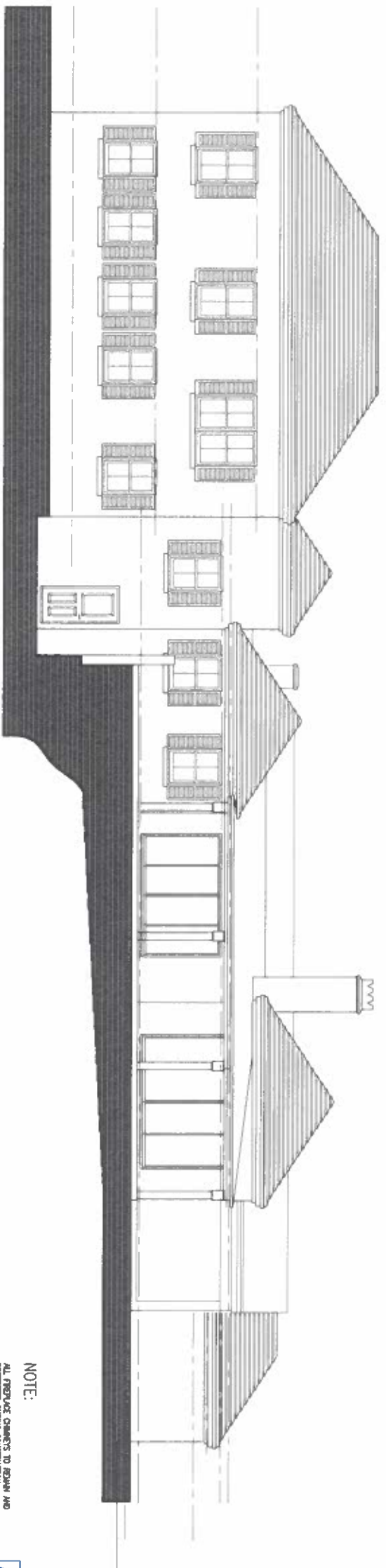
All Drawings, Specifications, and Related Documents are copyright of the architect and must be returned upon request. Reproduction of Drawings, Specifications, and Related Documents in part or whole is forbidden without the architect's written permission.
Contractors must check and verify all dimensions on site.



REV #	REV. Date	REV. Notes



01 SOUTH ELEVATION
SCALE 3/8"=1'-0"



02 WEST ELEVATION
SCALE 3/8"=1'-0"

NOTE:
ALL PREVIOUS COMMENTS TO REMAIN AND
PROTECTED DURING CONSTRUCTION
EXISTING BASED ON LAINE TOP TO REMAIN
AND PROTECTED DURING CONSTRUCTION

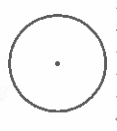


A9r-10
MONTPELIER
MIDDLE ROAD
DEVONSHIRE, BERMUDA
SOUTH - WEST
ELEVATIONS

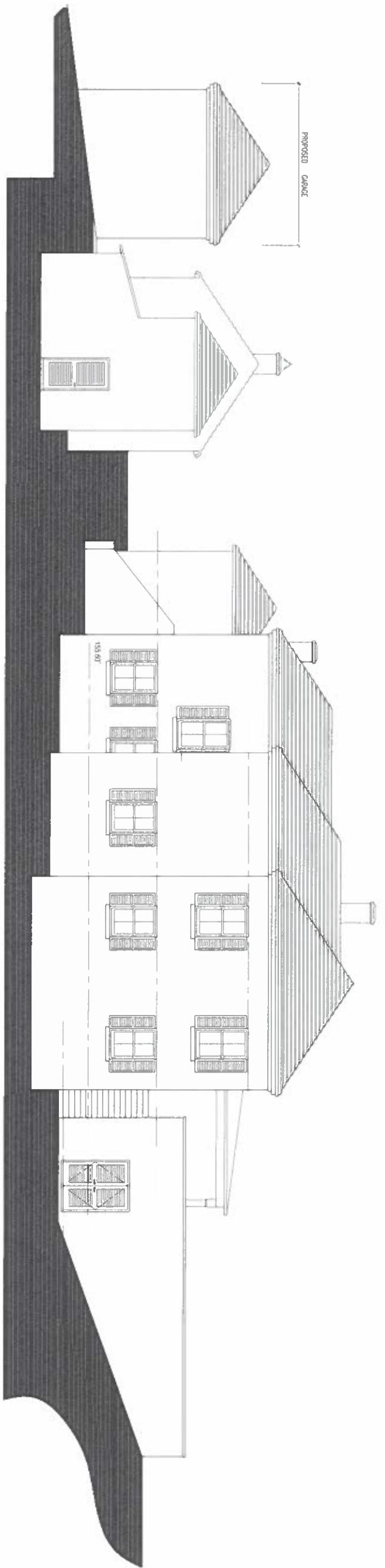
PROJECT NO: 21-029
DRAWN BY: JAA
DATE: MARCH 2022
SCALE: 1/4"=1'-0"



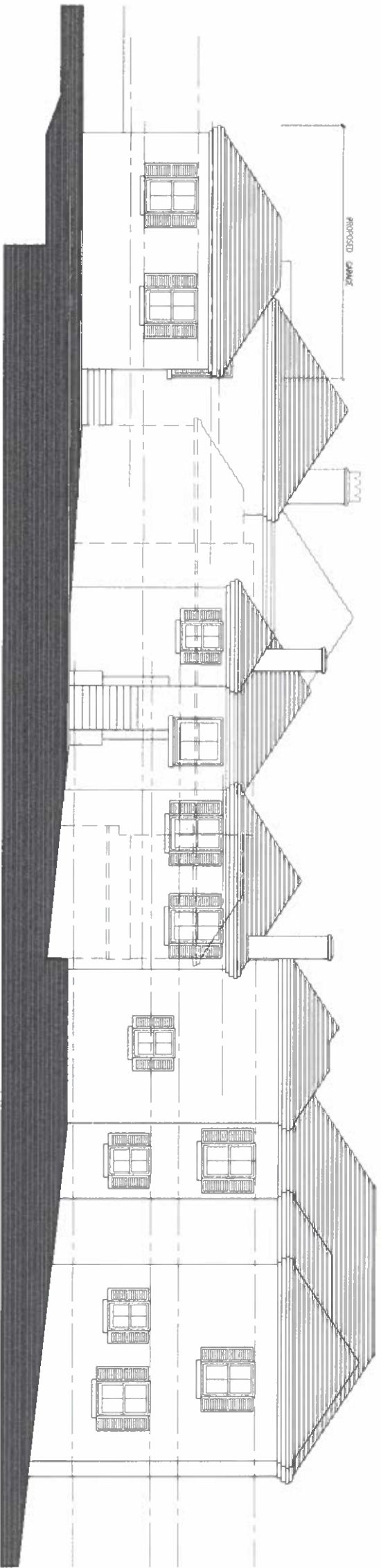
All Drawing, Specifications, and Related Documents are copyright of the architect and must be returned upon request. Reproduction of Drawings, Specifications, and Related Documents in part or whole is forbidden without the architect's written permission. Contractors must check and verify all dimensions on job.



REV #	REV. Date	REV. Notes



01 NORTH ELEVATION
SCALE 3/8"=1'-0"



02 EAST ELEVATION
SCALE 3/8"=1'-0"

SUPERSEDED

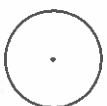
NOTE:
ALL FINISH COMMENTS TO ROOMS AND
EXISTING AREAS ONLY. TAKE OFF TO ROOMS
AND PROTECTED DURING CONSTRUCTION.

A10r-10
MONTPELIER
MIDDLE ROAD
DEVONSHIRE, BERMUDA
NORTH-EAST
ELEVATIONS

PROJECT NO: 21-029
DRAWN BY: AAA
DATE: MARCH 2022
SCALE: 1/4"=1'-0"

ENTASIS
Architecture
ENTASIS LTD
27 FRONT STREET - HAMILTON BERMUDA
TEL: 441-292-8829 - FAX: 441-296-2119

All Drawing, Specifications, and Related Documents are copyright of the architect and must be returned upon request. Reproduction of Drawings, Specifications and Related Documents in part or whole is forbidden without the architect's written permission.
Contractors must check and verify all dimensions on job.



REV #	REV. Date	REV. Notes

