



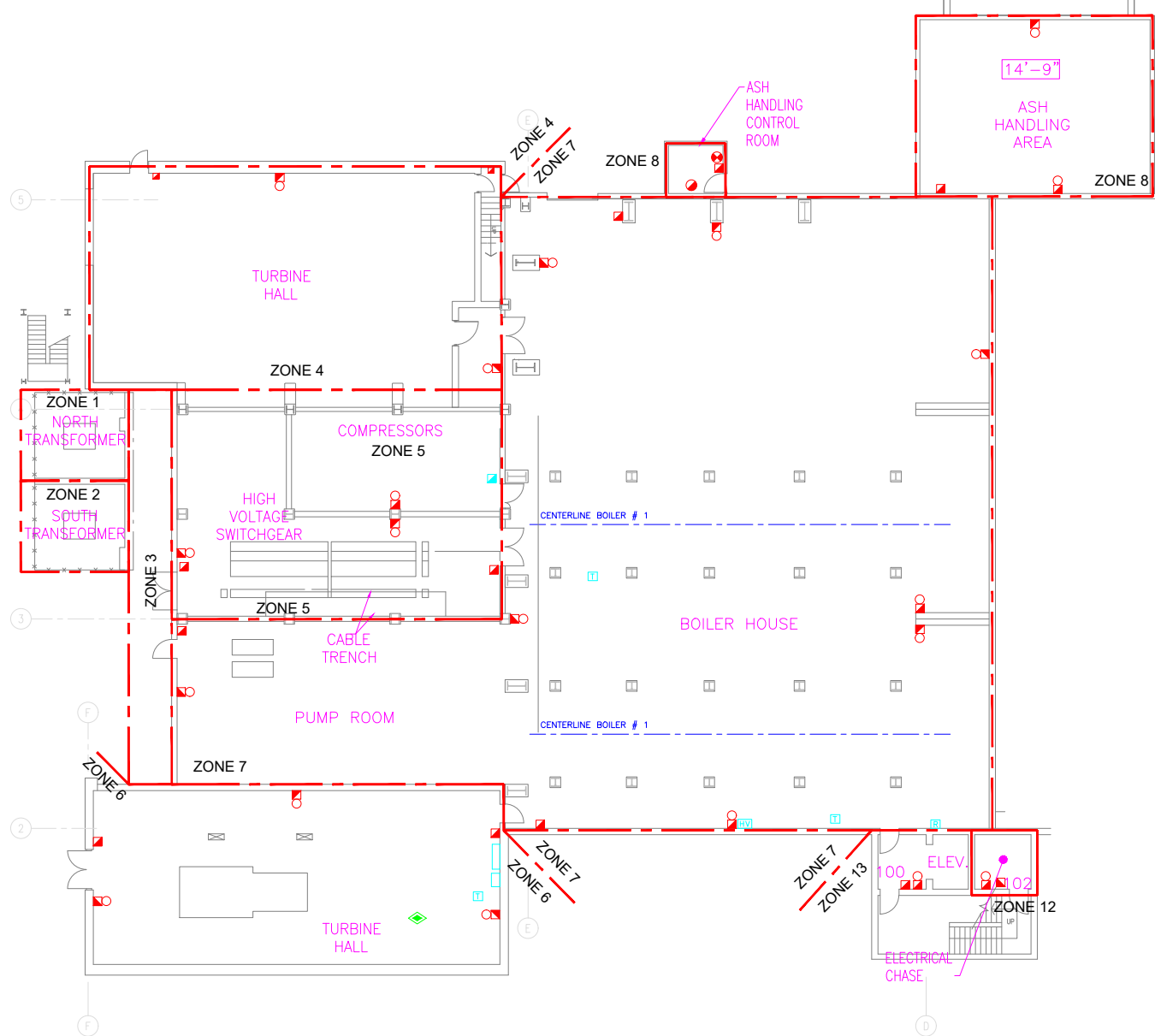
GOVERNMENT OF BERMUDA

MINISTRY OF PUBLIC WORKS

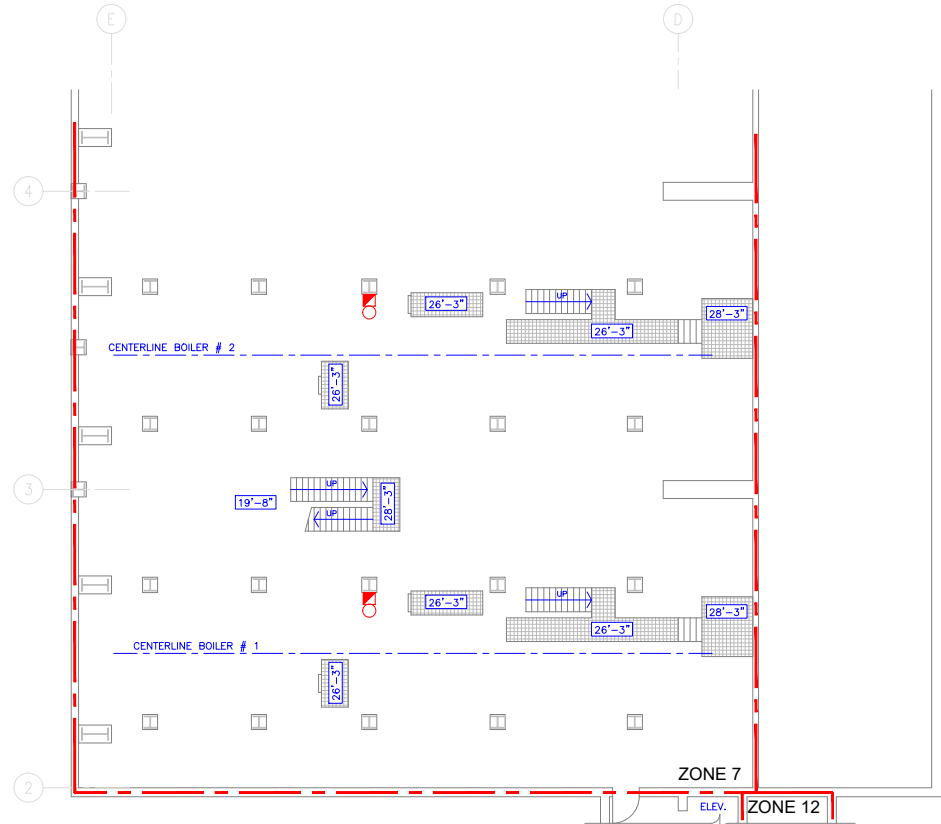
DEPARTMENT OF WORKS AND ENGINEERING

ELECTRICAL AND MECHANICAL ENGINEERING SECTION

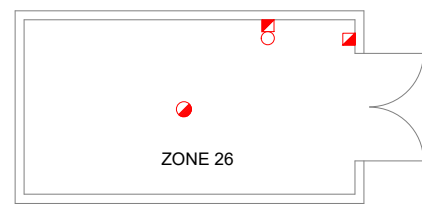
P.O. Box HM 1365 Hamilton HMF Bermuda
Tel: (441) 295-5151
Fax: (441) 295-4675



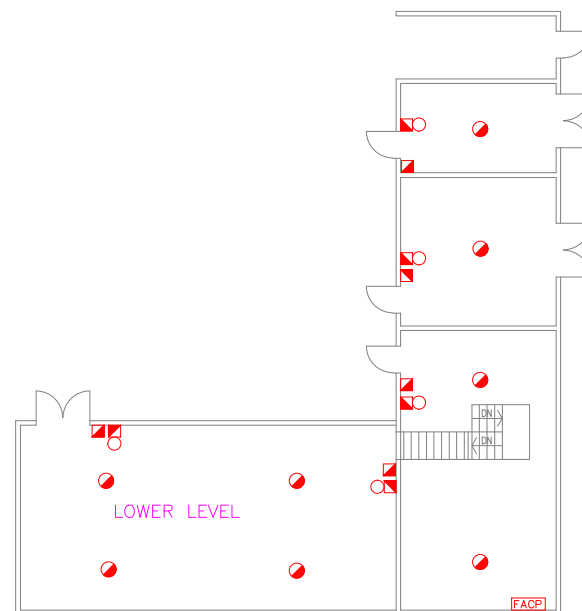
1 PLAN AT ANNEX LEVEL 1 AND BOILER HOUSE ELEV. 19'-8"



2 PLAN AT BOILER HOUSE ELEV. 26'-3"



3 ANALYZER HOUSE



4 SEA WATER PUMPING STATION

	MANUAL PULL STATION
	FIRE ALARM CONTROL PANEL
	FIRE ALARM ANNUNCIATOR
	HOSE VALVES
	HORN/STROBE
	HEAT DETECTOR
	SMOKE DETECTOR
	HOSE REEL
	WATER MONITORS
	PREACTION VALVE
	DELUGE VALVE
	ALARM VALVE
	COMPARTMENT SEPARATION

ISSUE / REVISION

No.	Date:
1	UPDATED PLAN NOV 2021

SCALE: N.T.S.

SURVEY

Prepared By: LB Date: -

DESIGN

Prepared By: LB Date: -

Checked By: DB Date: -

DRAWING

Prepared By: LB Date: -

Checked By: DB Date: -

Approved By: DB

Project Number: 44

Project Title:

TYNES BAY WASTE-TO-ENERGY FACILITY

31 PALMETTO ROAD
DEVONSHIRE

Sheet Title:
PLAN AT ANNEX LEVEL 1,
BOILER HOUSE ELEVATIONS
(19'-8" AND 26'-3"), ANALYZER
HOUSE, AND SEA WATER
PUMPING STATION

Revision: 1 Sheet Number:

FSM-1



GOVERNMENT OF
BERMUDA

MINISTRY OF
PUBLIC WORKS

DEPARTMENT OF
WORKS AND ENGINEERING

ELECTRICAL AND MECHANICAL
ENGINEERING SECTION

P.O. Box HM 1365 Hamilton HMFX Bermuda
Tel: (441) 295-5151
Fax: (441) 295-4675

ISSUE / REVISION

No.	Date:
-	-
-	-
-	-
1	UPDATED PLAN NOV 2021

SCALE: N.T.S.

SURVEY

Prepared By: LB Date: -

DESIGN

Prepared By: - Date: -

Checked By: -

Date: -

DRAWING

Prepared By: LB Date: -

Checked By: DB

Date: -

Approved By: DB

Project Number:

Project Title:

**TYNES BAY WASTE-TO-ENERGY
FACILITY**

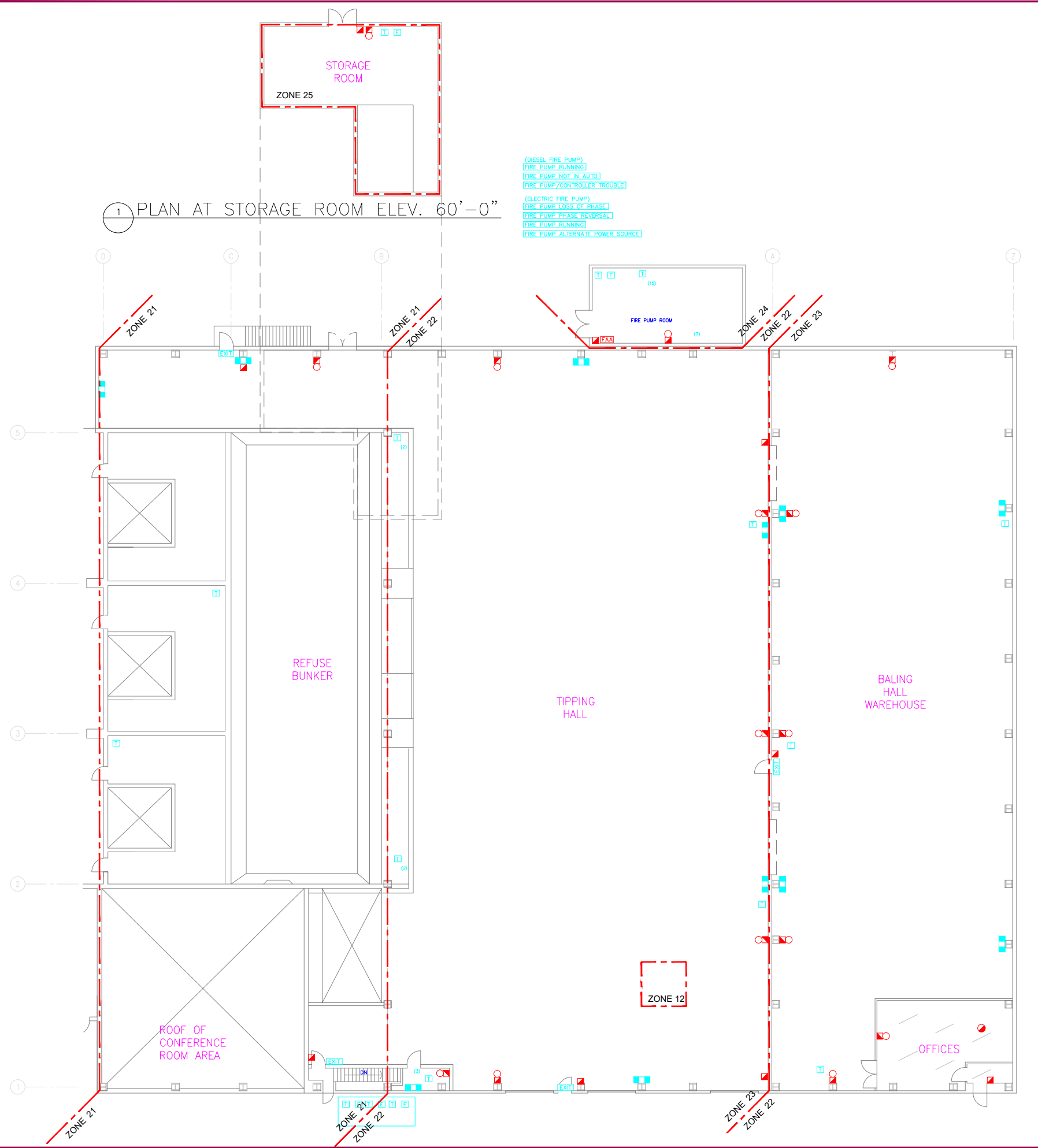
31 PALMETTO ROAD
DEVONSHIRE

Sheet Title:
**PLAN AT ANNEX LEVEL 2 &
BOILER HOUSE ELEVATIONS**
(33'-9", 36'-9", 44'-7", AND 49'-3")

Revision: 1 Sheet Number:

FSM-3

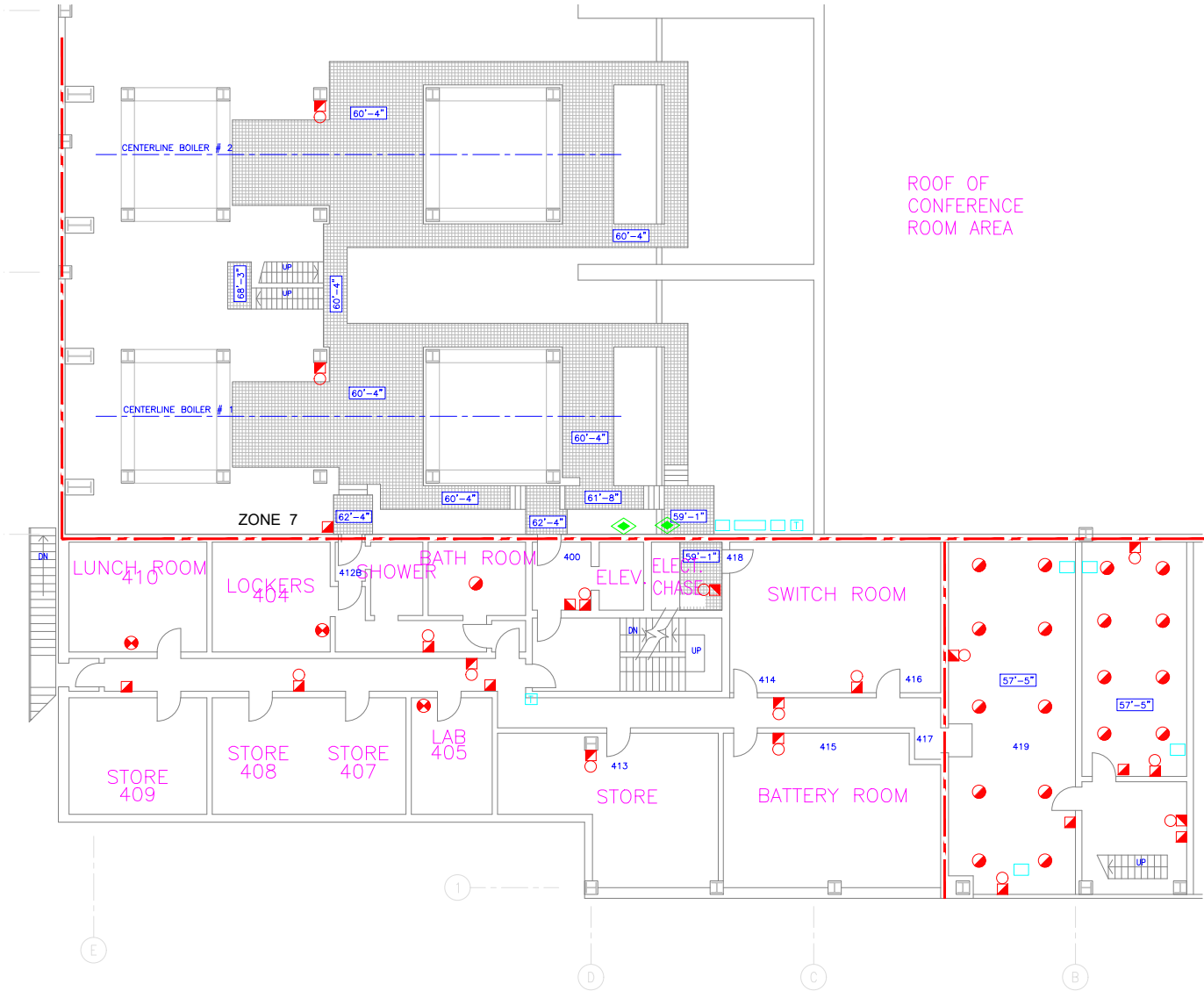
① PLAN AT STORAGE ROOM ELEV. 60'-0"



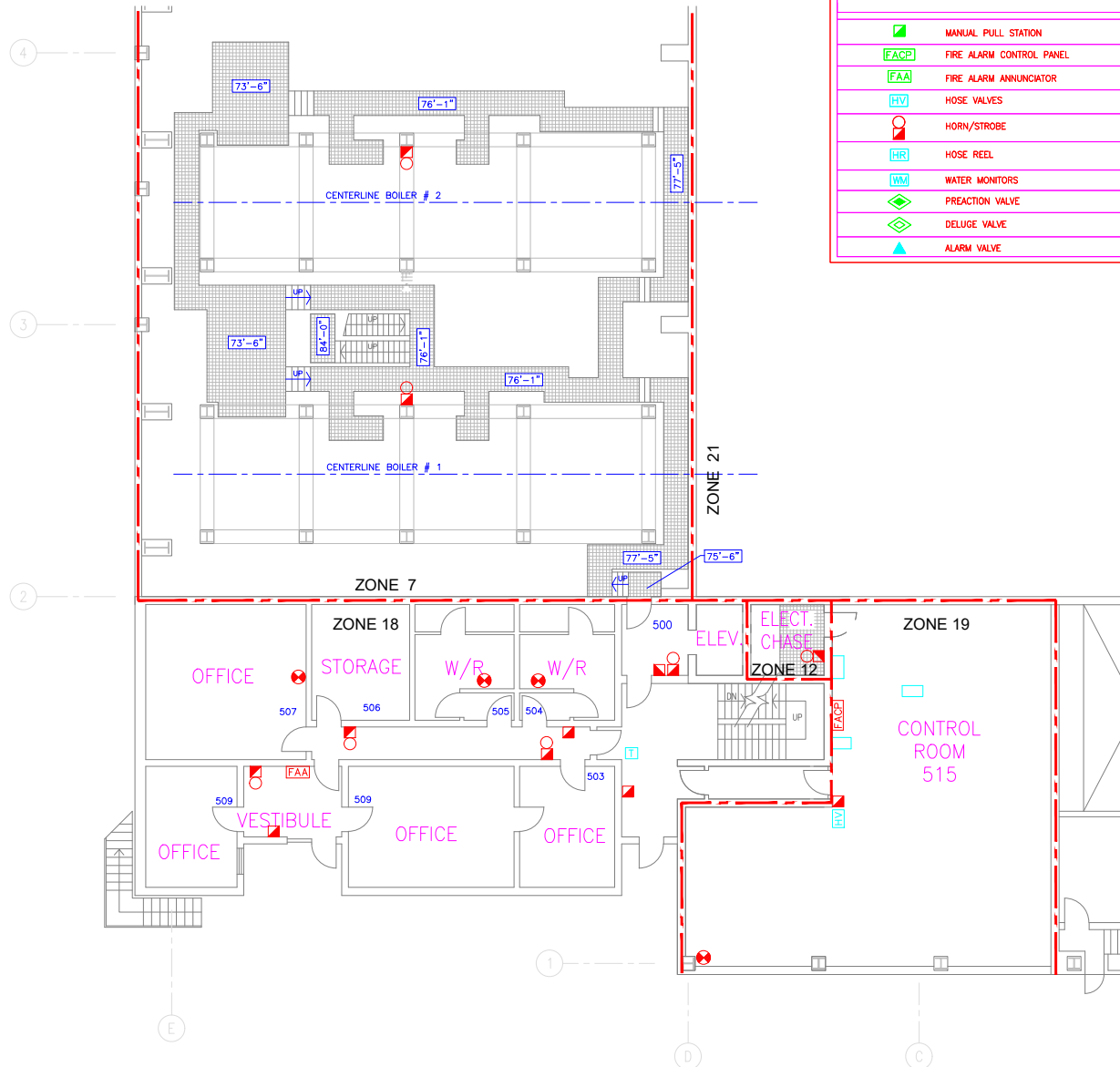
	MANUAL PULL STATION
	FIRE ALARM CONTROL PANEL
	FIRE ALARM ANNUNCIATOR
	HOSE VALVES
	HORN/STROBE
	HORN
	HEAT DETECTOR
	SMOKE DETECTOR
	HOSE REEL
	WATER MONITORS
	PREACTION VALVE
	DELUGE VALVE
	ALARM VALVE
	COMPARTMENT SEPARATION
	EXIT LIGHT

	(DIESEL FIRE PUMP) FIRE_PUMP_RUNNING
	FIRE_PUMP_NOT_IN_AUTO
	FIRE_PUMP_CONTROLLER_TROUBLE
	(ELECTRIC FIRE PUMP)
	FIRE_PUMP_LOSS_OF_PHASE
	FIRE_PUMP_PHASE_REVERSAL
	FIRE_PUMP_RUNNING
	FIRE_PUMP_ALTERNATE_POWER_SOURCE

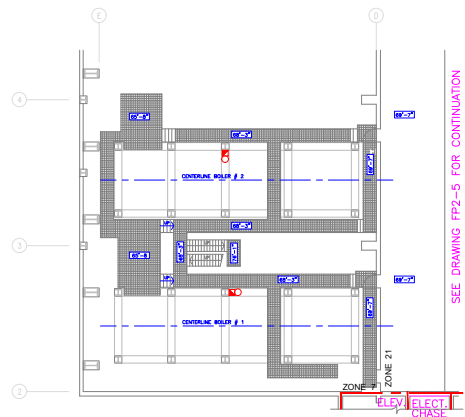
② PLAN AT BALING HALL, TIPPING HALL, AND REFUSE BUNKER ELEV. 72'-2"



1 PLAN AT ADMINISTRATION LEVEL 4 AND BOILER HOUSE ELEV. 62'-4"



2 PLAN AT ADMINISTRATION LEVEL 5 AND BOILER HOUSE ELEV. 75'-6"



3 PLAN AT BOILER HOUSE ELEV. 68'-3"

LEGEND	
☑	MANUAL PULL STATION
FACP	FIRE ALARM CONTROL PANEL
FAA	FIRE ALARM ANNUNCIATOR
HV	HOSE VALVES
⊙	HORN/STROBE
HR	HOSE REEL
HM	WATER MONITORS
◇	PREACTION VALVE
◇	DELUGE VALVE
▲	ALARM VALVE



GOVERNMENT OF BERMUDA

MINISTRY OF PUBLIC WORKS
DEPARTMENT OF WORKS AND ENGINEERING

ELECTRICAL AND MECHANICAL ENGINEERING SECTION
P.O. Box HM 1365 Hamilton HMF Bermuda
Tel: (441) 295-5151
Fax: (441) 295-4675

ISSUE / REVISION

No.	Date:
1	NOV 2021

SCALE: N.T.S.

SURVEY

Prepared By: LB Date: N.T.S.

DESIGN

Prepared By: Date: -

Checked By: -

Date: -

DRAWING

Prepared By: LB Date: -

Checked By: DB

Date: -

Approved By: DB

Project Number: -

Project Title:

TYNES BAY WASTE-TO-ENERGY FACILITY

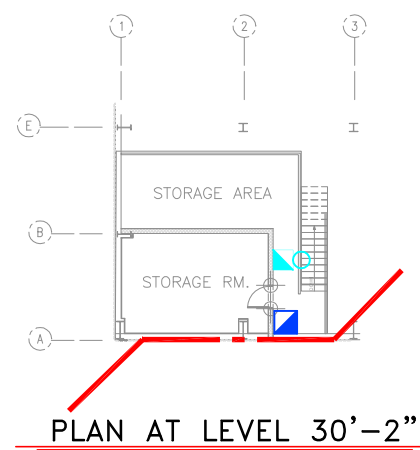
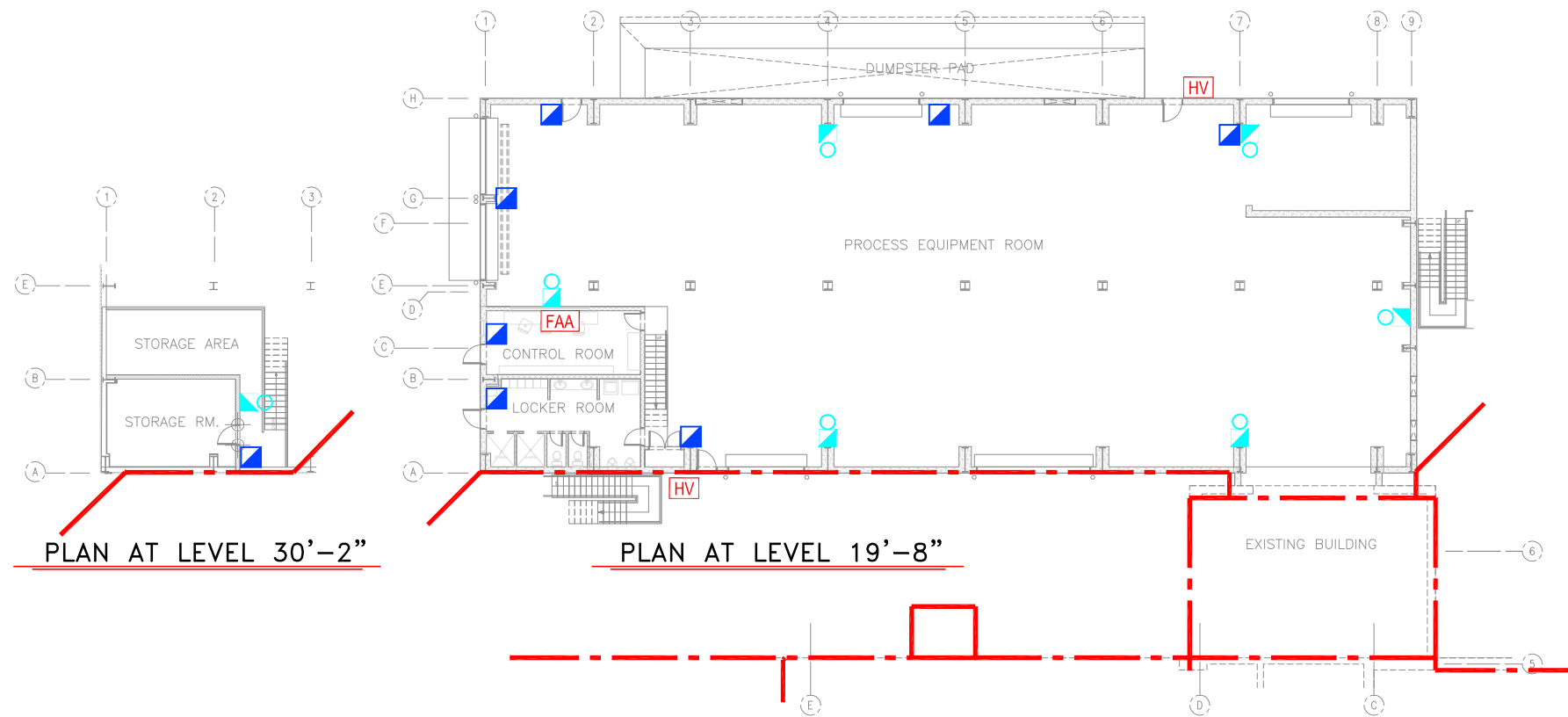
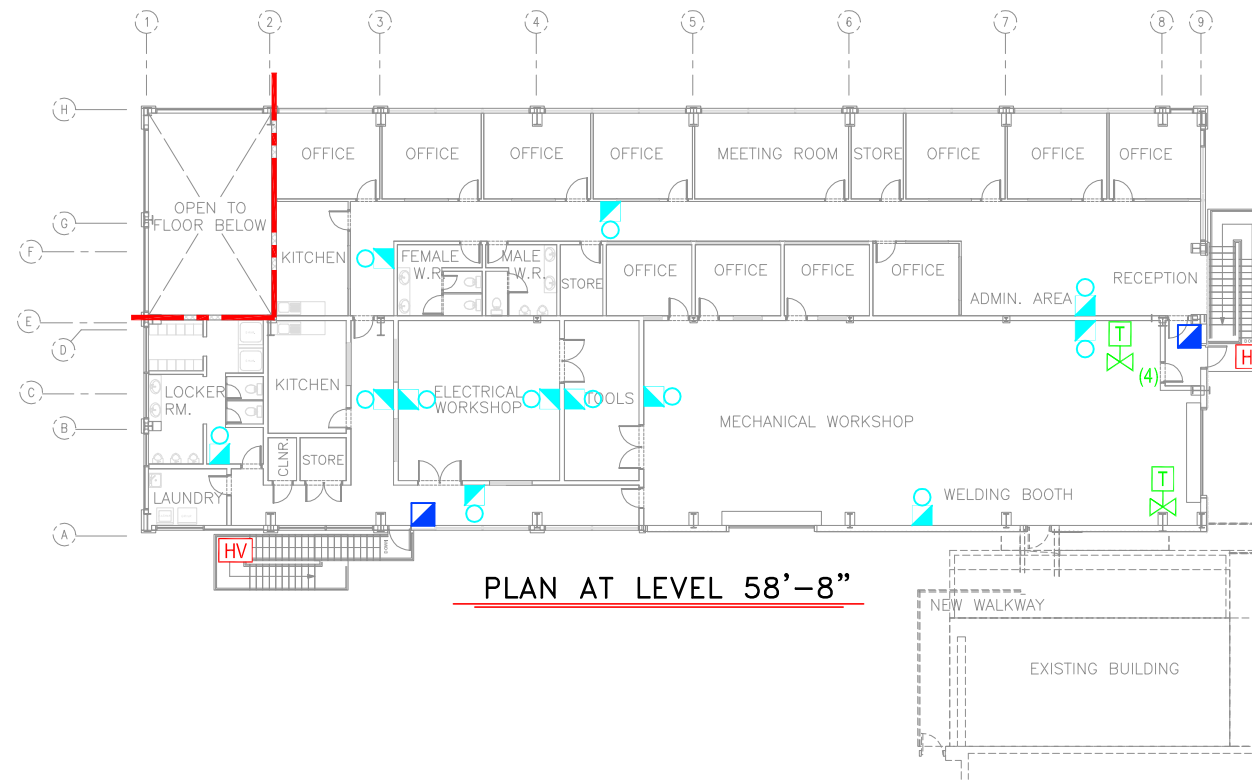
31 PALMETTO ROAD
DEVONSHIRE

Sheet Title:
PLAN AT ADMINISTRATION LEVELS 4 AND 5, AND AT BOILER HOUSE ELEVATIONS (62'-4", 68'-3", AND 75'-6")

Revision: 1

Sheet Number:

FSM-4



LEGEND	
	MANUAL PULL STATION
	FIRE ALARM CONTROL PANEL
	FIRE ALARM ANNUNCIATOR
	HOSE VALVE
	HORN / STROBE
	COMPARTMENT SEPARATION
	HOSE REEL
	WATER MONITOR
	CONTROL VALVE c/w TAMPER SWITCH
	ALARM VALVE
	PREACTION VALVE
	DELUGE VALVE
	FIRE PUMP

Project
TYNES BAY ENERGY FACILITY
 DEVONSHIRE PARISH,
 BERMUDA

Drawing
ASH PROCESSING BUILDING AT ELEVATIONS (19'-8", 30'-2" AND 58'-8")

Drawing no.
FSM-6



GOVERNMENT OF
BERMUDA

MINISTRY OF
PUBLIC WORKS

DEPARTMENT OF
WORKS AND ENGINEERING

ELECTRICAL AND MECHANICAL
ENGINEERING SECTION

P.O. Box HM 1365 Hamilton HMEX Bermuda
Tel: (441) 295-5151
Fax: (441) 295-4675

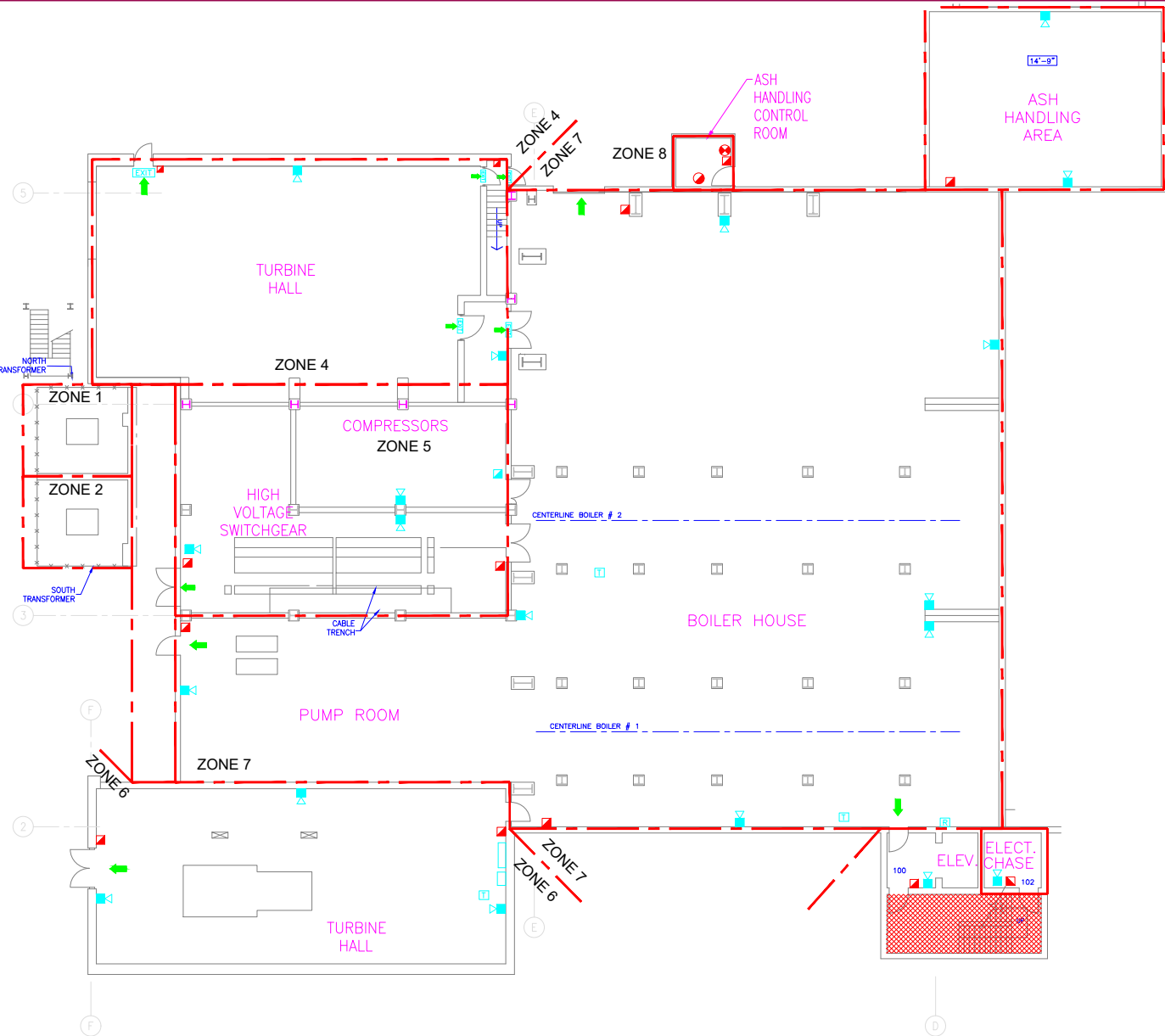
ISSUE / REVISION	
No.	Date:
1	UPDATED PLAN NOV 2021

SCALE:	N.T.S.	
SURVEY		
Prepared By:	LB	
Date:	-	
DESIGN		
Prepared By:	-	
Date:	-	
Checked By:	-	
Date:	-	
DRAWING		
Prepared By:	LB	
Date:	-	
Checked By:	DB	
Date:	-	
Approved By:	DB	
Date:	-	
Project Number:	111	
Project Title:	TYNES BAY WASTE-TO-ENERGY FACILITY	

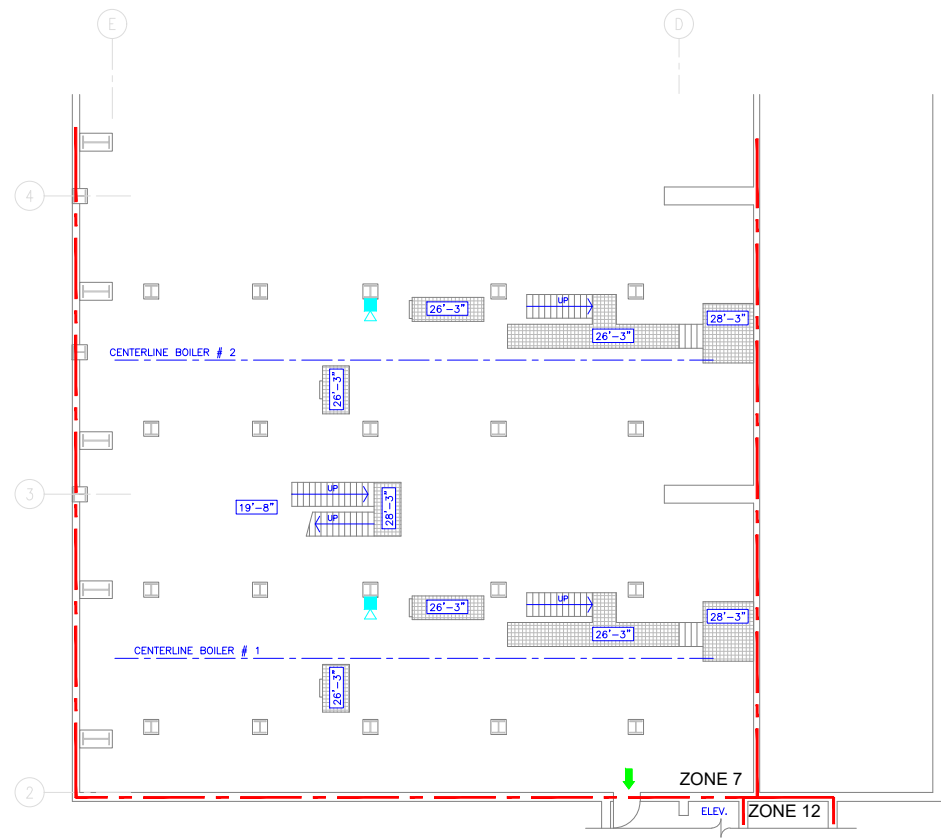
31 PALMETTO ROAD
DEVONSHIRE

Sheet Title:
**PLAN AT ANNEX LEVEL 1,
BOILER HOUSE ELEVATIONS
(19'-8" AND 26'-3"), ANALYZER
HOUSE, AND SEA WATER
PUMPING STATION**

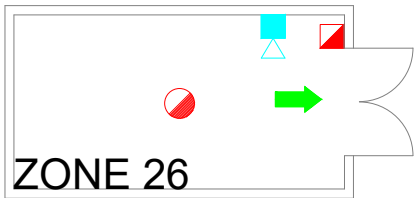
Revision: _____ Sheet Number: **FSP-1**



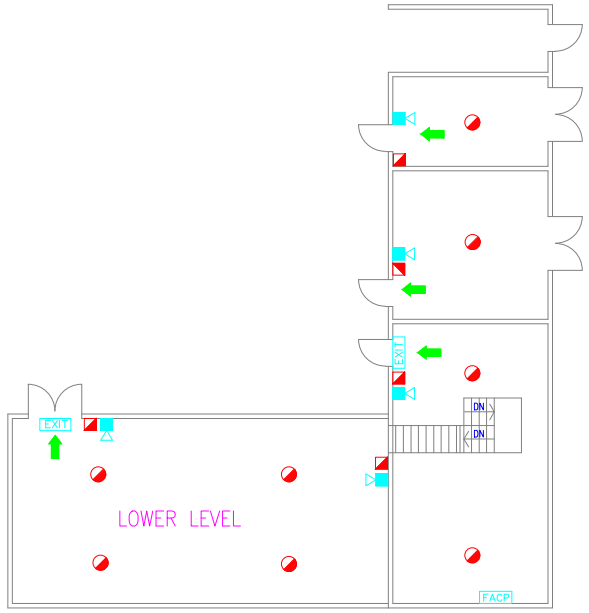
1 PLAN AT ANNEX LEVEL 1 AND BOILER HOUSE ELEV. 19'-8"



2 PLAN AT BOILER HOUSE ELEV. 26'-3"



3 ANALYZER HOUSE



4 SEA WATER PUMPING STATION

LEGEND	
	MANUAL PULL STATION
	FIRE ALARM CONTROL PANEL
	FIRE ALARM ANNUNCIATOR
	HOSE VALVES
	EXIT DOORS
	EVAUATION ROUTE
	EXIT STAIR
	COMPARTMENT SEPERATION

UPON HEARING FIRE ALARM

REMAN CALM and be alert for signs of fire.
FOLLOW the instructions of the Assembly Area Coordinator
CLOSE all doors behind you.

UPON DISCOVERY OF SMOKE OR FIRE

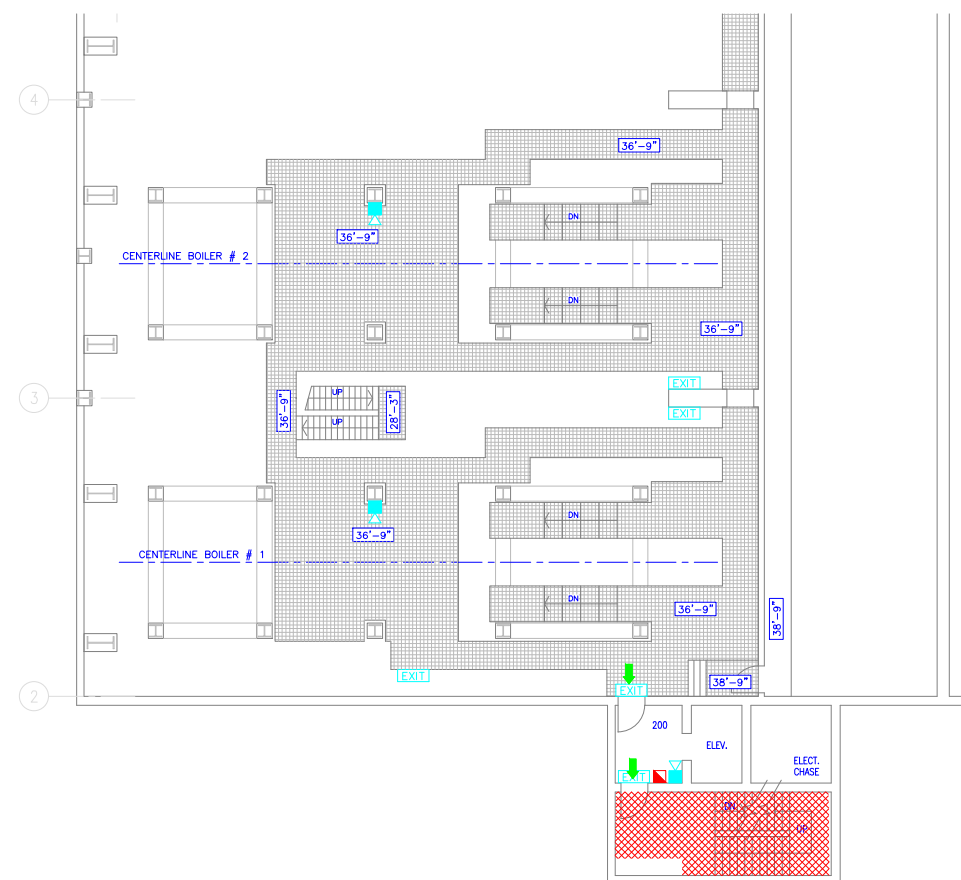
REMOVE person(s) from immediate danger.
CLOSE all doors behind you.
ACTIVATE the nearest fire alarm pull station.
CALL 911 or 9-911 to notify the Fire Service.
USE a fire extinguisher to extinguish the fire if possible.
Follow the instructions of the Assembly Area Coordinator



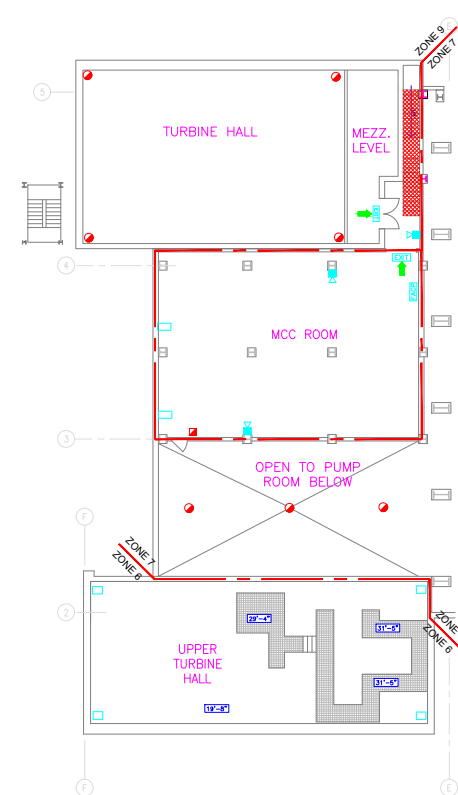
GOVERNMENT OF
BERMUDA

MINISTRY OF
PUBLIC WORKS
DEPARTMENT OF
WORKS AND ENGINEERING

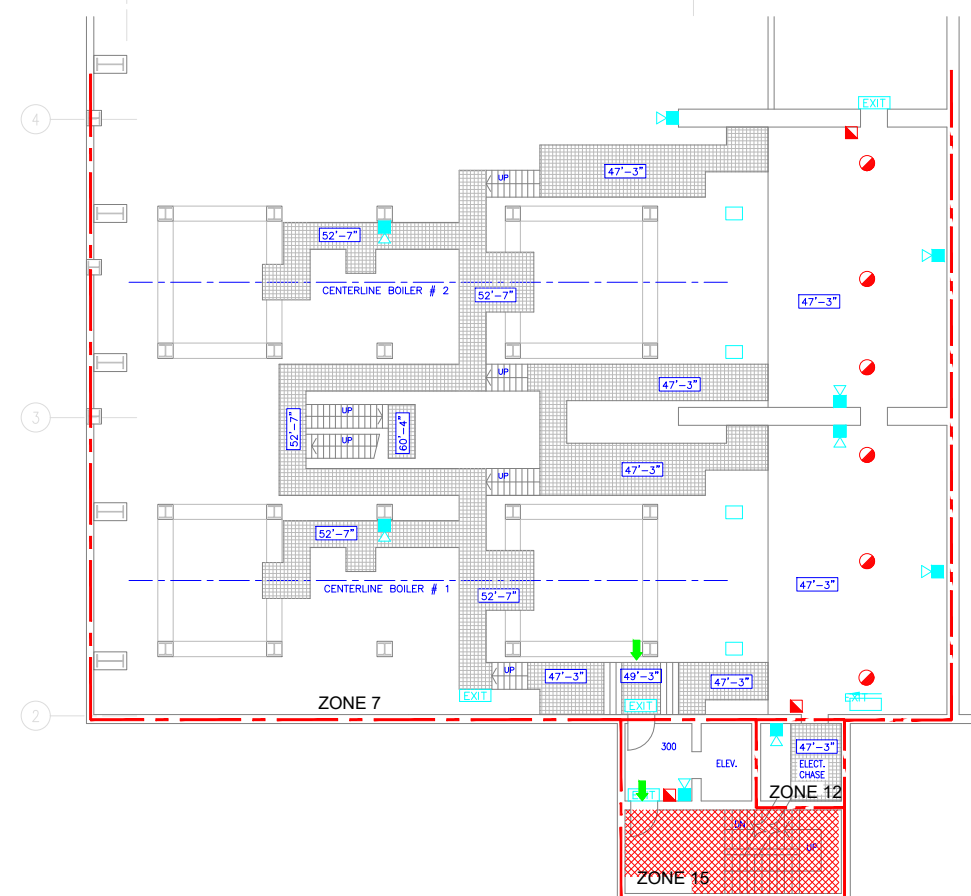
ELECTRICAL AND MECHANICAL
ENGINEERING SECTION
P.O. Box HM 1365 Hamilton HMEX Bermuda
Tel: (441) 295-5151
Fax: (441) 295-4675



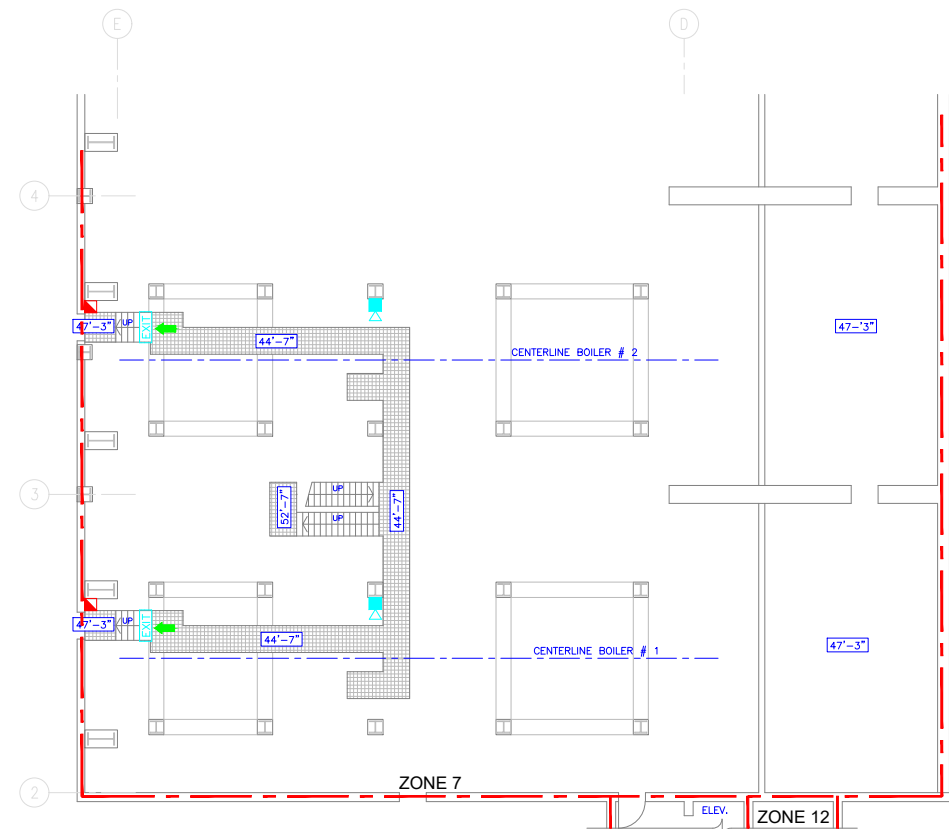
1 PLAN AT BOILER HOUSE ELEV. 36'-9"



2 PLAN AT ANNEX LEVEL 2 ELEV. 33'-9"



3 PLAN AT BOILER HOUSE LEVEL 3 ELEV. 49'-3"



4 PLAN AT BOILER HOUSE ELEV. 44'-7"

LEGEND	
[Red Square]	MANUAL PULL STATION
[FACP]	FIRE ALARM CONTROL PANEL
[FAA]	FIRE ALARM ANNUNCIATOR
[HVI]	HOSE VALVES
[Green Arrow]	EXIT DOORS
[Dashed Line]	EVACUATION ROUTE
[Cross-hatch]	EXIT STAIR
[Red Line]	COMPARTMENT SEPERATION

UPON HEARING FIRE ALARM
REMAIN CALM and be alert for signs of fire.
FOLLOW the instructions of the Assembly Area Coordinator
CLOSE all doors behind you.

UPON DISCOVERY OF SMOKE OR FIRE
REMOVE person(s) from immediate danger.
CLOSE all doors behind you.
ACTIVATE the nearest fire alarm pull station.
CALL 911 or 9-911 to notify the Fire Service.
USE a fire extinguisher to extinguish the fire if possible.
Follow the instructions of the Assembly Area Coordinator

ISSUE / REVISION

No.	Date:
1	UPDATED PLAN NOV 2021

SCALE: N.T.S.

SURVEY

Prepared By: LB Date: -

DESIGN

Prepared By: - Date: -

Checked By: - Date: -

DRAWING

Prepared By: LB Date: -

Checked By: DB Date: -

Approved By: DB

Project Number: 44

Project Title: TYNES BAY WASTE-TO-ENERGY FACILITY

31 PALMETTO ROAD
DEVONSHIRE

Sheet Title:
PLAN AT ANNEX LEVEL 2 &
BOILER HOUSE ELEVATIONS
(33'-9", 36'-9", 44'-7", AND 49'-3")



GOVERNMENT OF BERMUDA

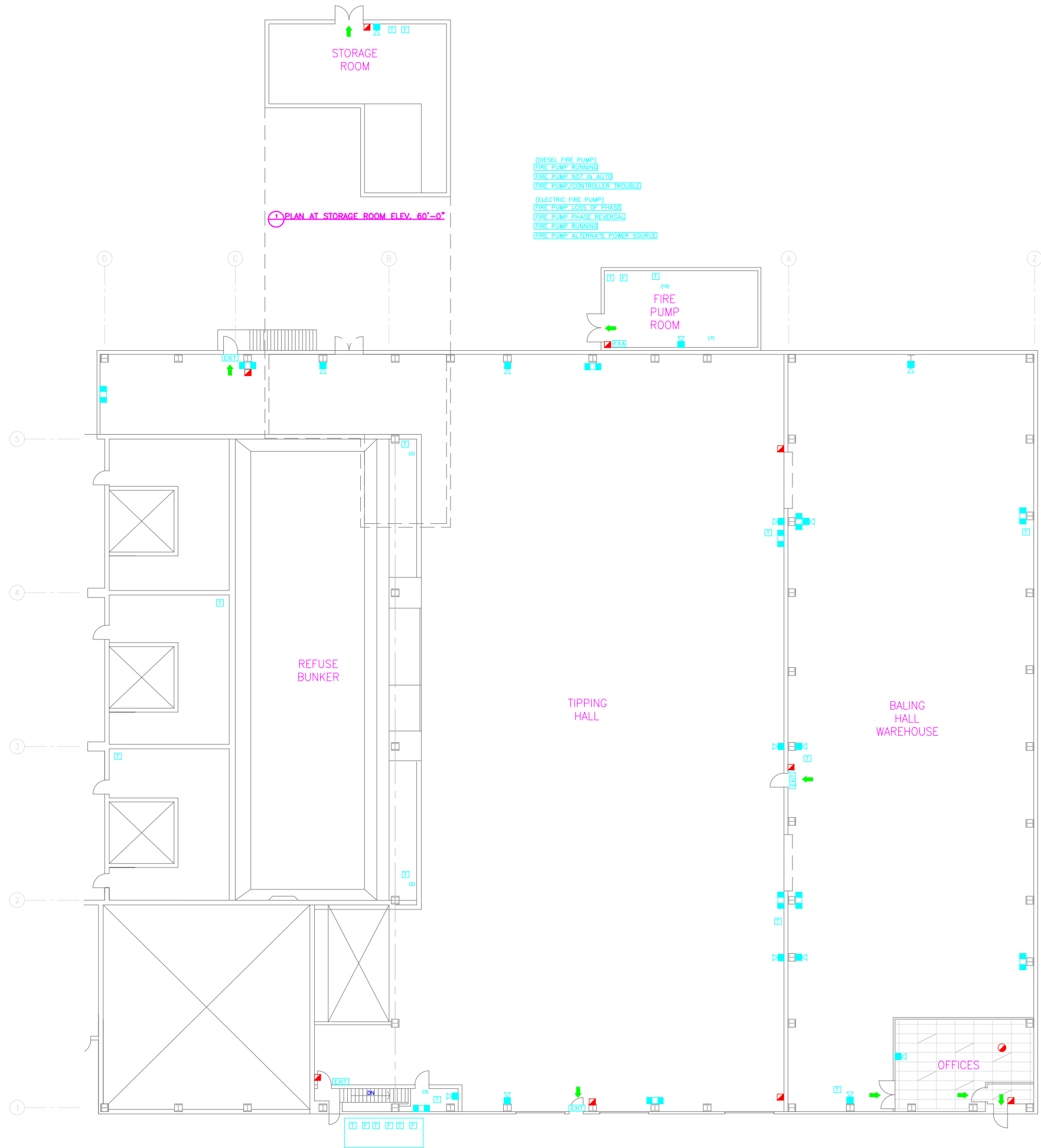
MINISTRY OF PUBLIC WORKS
DEPARTMENT OF WORKS AND ENGINEERING

ELECTRICAL AND MECHANICAL ENGINEERING SECTION
P.O. Box HM 1365 Hamilton HMF Bermuda
Tel: (441) 295-5151
Fax: (441) 295-4675

LEGEND	
	MANUAL PULL STATION
	FIRE ALARM CONTROL PANEL
	FIRE ALARM ANNUNCIATOR
	HOSE VALVES
	EXIT DOORS
	EVACUATION ROUTE
	EXIT STAIR
	COMPARTMENT SEPERATION

UPON HEARING FIRE ALARM
REMAN CALM and be alert for signs of fire.
FOLLOW the instructions of the Assembly Area Coordinator
CLOSE all doors behind you.

UPON DISCOVERY OF SMOKE OR FIRE
REMOVE person(s) from immediate danger.
CLOSE all doors behind you.
ACTIVATE the nearest fire alarm pull station.
CALL 911 or 9-911 to notify the Fire Service.
USE a fire extinguisher to extinguish the fire if possible.
Follow the instructions of the Assembly Area Coordinator



ISSUE / REVISION	
No.	Date:
1	UPDATED PLAN NOV 2021

SCALE: N.T.S.	
SURVEY	
Prepared By: LB	Date: -
DESIGN	
Prepared By: -	Date: -
Checked By: -	Date: -
DRAWING	
Prepared By: LB	Date: -
Checked By: DB	Date: -
Approved By: DB	Date: -
Project Number: -	
Project Title: TYNES BAY WASTE-TO-ENERGY FACILITY	

31 PALMETTO ROAD
DEVONSHIRE

Sheet Title: PLAN AT BAILING HALL, TIPPING HALL, REFUSE BUNKER ELEVATION 72'-2", AND AT STORAGE ROOM ELEVATION 60'-0"

Revision: Sheet Number: **FSP-3**



GOVERNMENT OF BERMUDA

MINISTRY OF PUBLIC WORKS
DEPARTMENT OF WORKS AND ENGINEERING

ELECTRICAL AND MECHANICAL ENGINEERING SECTION
P.O. Box HM 1365 Hamilton HMF Bermuda
Tel: (441) 295-5151
Fax: (441) 295-4675

ISSUE / REVISION

No.	Date:
1	NOV 2021

SCALE: N.T.S.

SURVEY

Prepared By: LB Date: -

DESIGN

Prepared By: - Date: -

Checked By: -

Date: -

DRAWING

Prepared By: LB Date: -

Checked By: DB

Date: -

Approved By: DB

Date: -

Project Number:

44

Project Title:

TYNES BAY WASTE-TO-ENERGY FACILITY

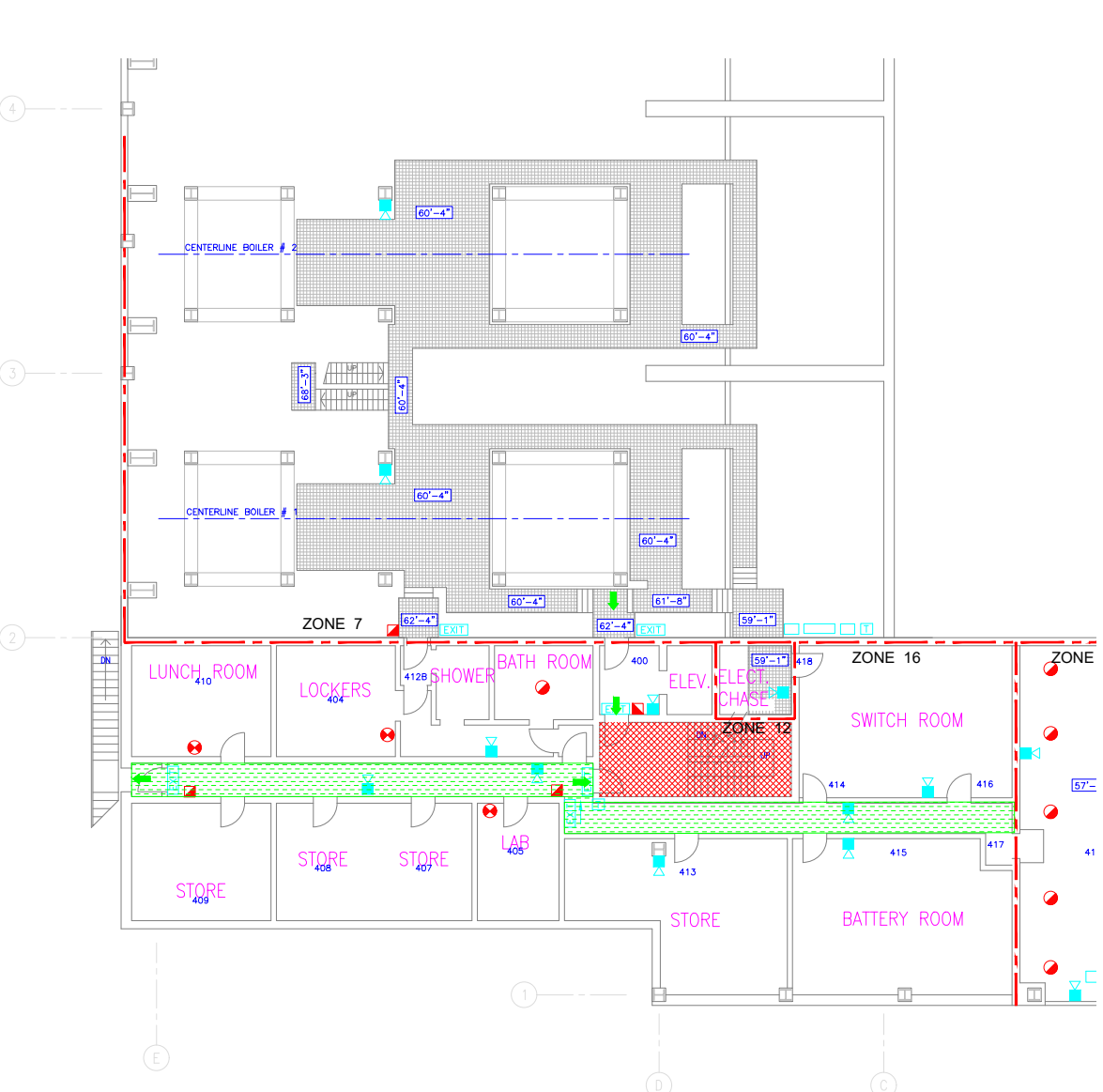
31 PALMETTO ROAD
DEVONSHIRE

Sheet Title:

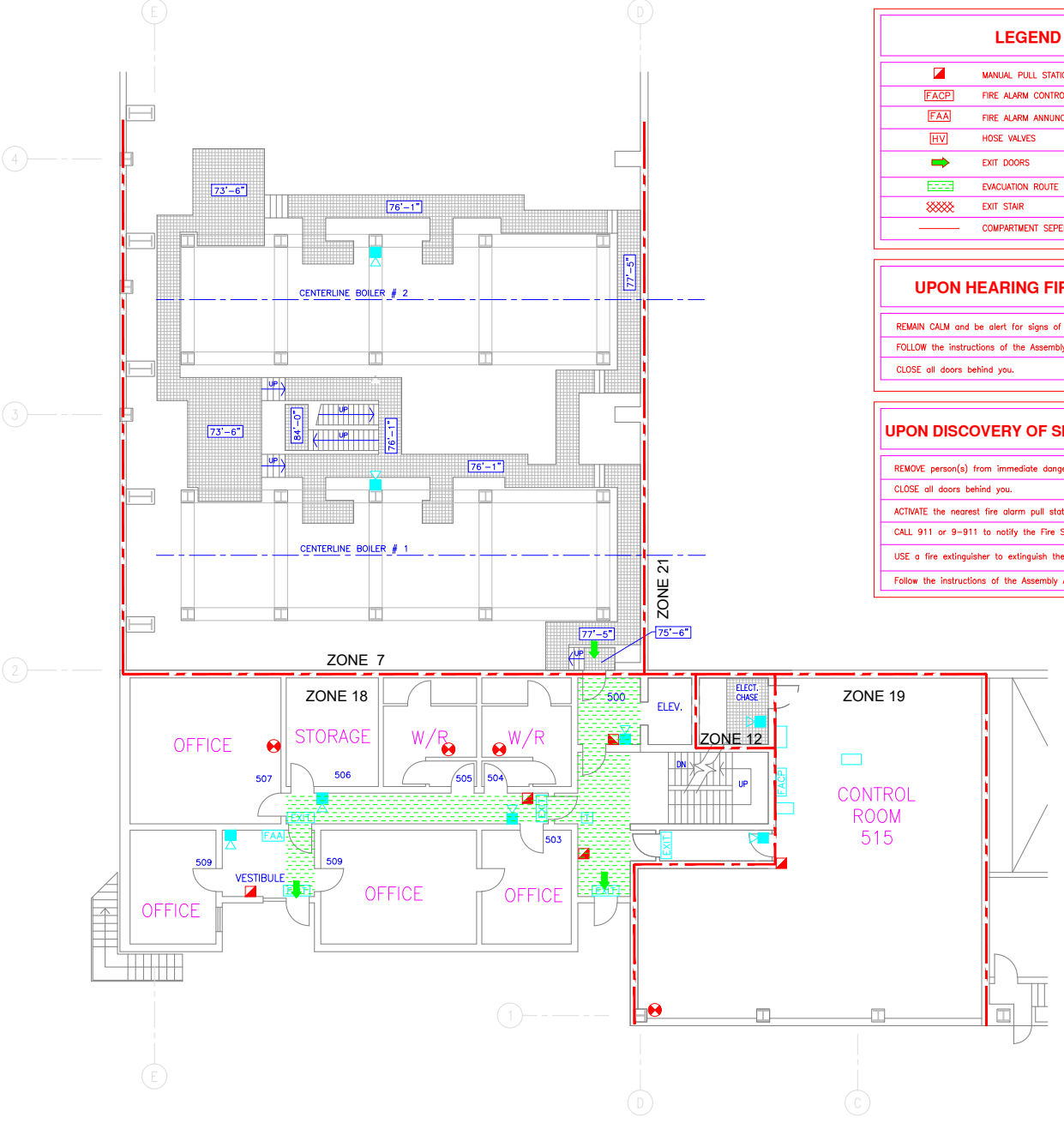
PLAN AT ADMINISTRATION LEVELS 4 AND 5, AND AT BOILER HOUSE ELEVATIONS (62'-4", 68'-3", AND 75'-6")

Revision: Sheet Number:

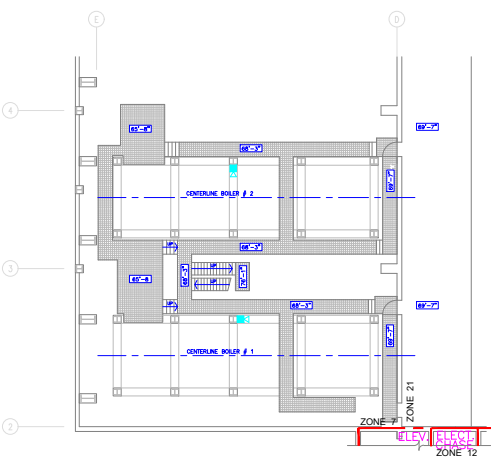
1 FSP-4



1 PLAN AT ADMINISTRATION LEVEL 4 AND BOILER HOUSE ELEV. 62'-4"
SCALE: 3/32" = 1'0"



2 PLAN AT ADMINISTRATION LEVEL 5 AND BOILER HOUSE ELEV. 75'-6"



3 PLAN AT BOILER HOUSE ELEV. 68'-3"

LEGEND

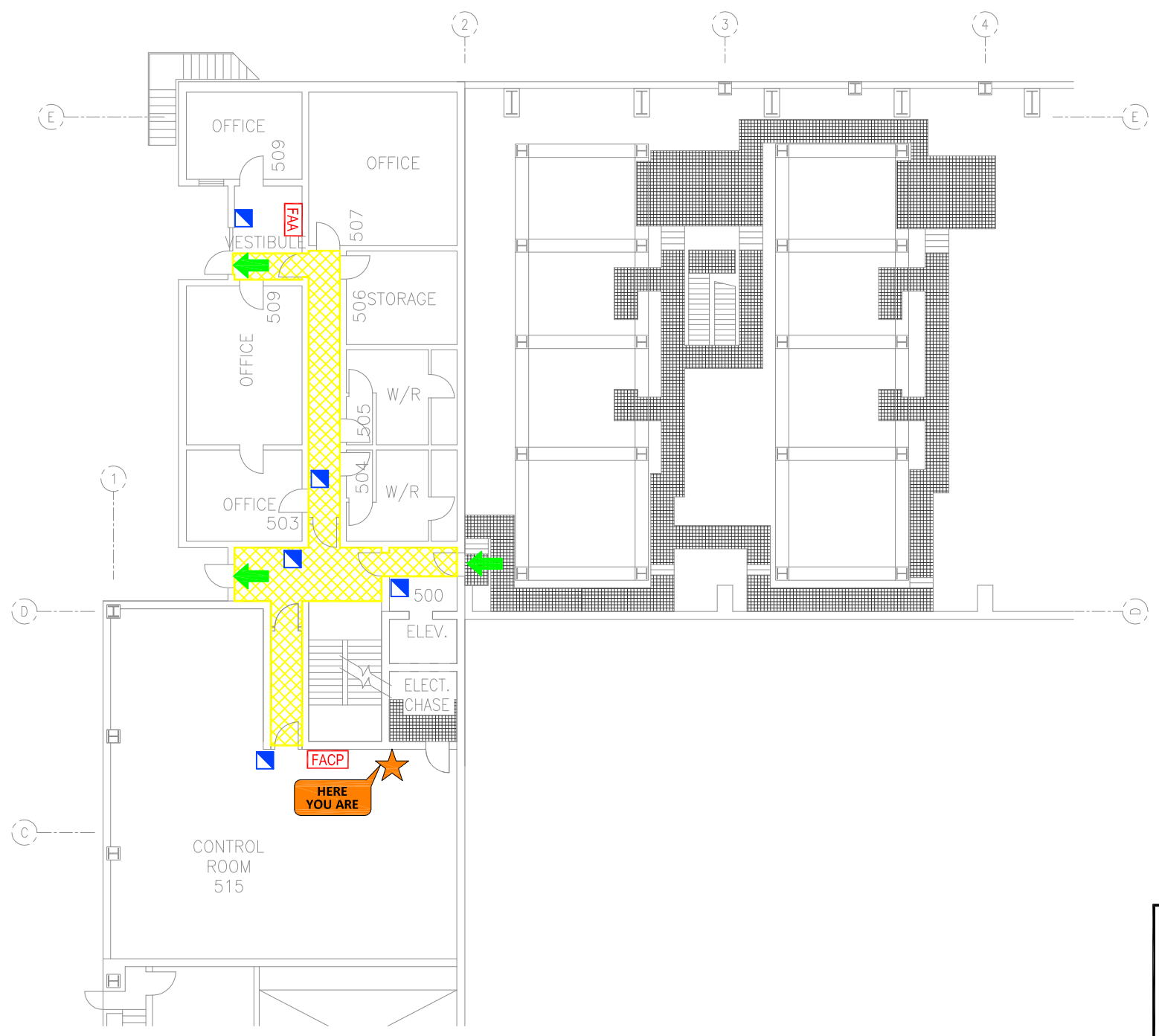
	MANUAL PULL STATION
	FIRE ALARM CONTROL PANEL
	FIRE ALARM ANNUNCIATOR
	HOSE VALVES
	EXIT DOORS
	EVACUATION ROUTE
	EXIT STAIR
	COMPARTMENT SEPERATION

UPON HEARING FIRE ALARM

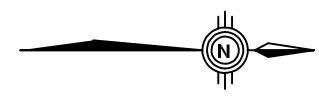
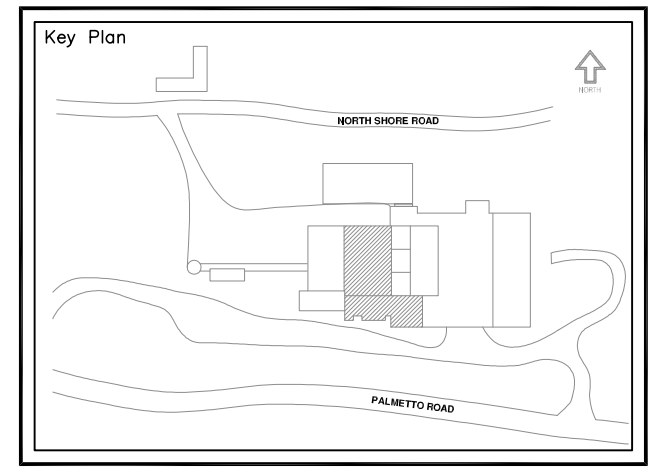
REMAIN CALM and be alert for signs of fire.
FOLLOW the instructions of the Assembly Area Coordinator
CLOSE all doors behind you.

UPON DISCOVERY OF SMOKE OR FIRE

REMOVE person(s) from immediate danger.
CLOSE all doors behind you.
ACTIVATE the nearest fire alarm pull station.
CALL 911 or 9-911 to notify the Fire Service.
USE a fire extinguisher to extinguish the fire if possible.
Follow the instructions of the Assembly Area Coordinator



LEGEND	
	MANUAL PULL STATION
	FIRE ALARM CONTROL PANEL
	FIRE ALARM ANNUNCIATOR
	HOSE VALVE
	EXIT DOOR
	EVACUATION ROUTE
	EXIT STAIR
	YOU ARE HERE



PLAN AT ADMINISTRATION LEVEL 5 AND BOILER HOUSE ELEV. 75'-6"

UPON HEARING FIRE ALARM

REMAIN CALM and be alert for signs of fire.
 FOLLOW the instructions of the Assembly Area Coordinator.
 CLOSE all doors behind you.

UPON DISCOVERY OF SMOKE OR FIRE

REMOVE person(s) from immediate danger.
 CLOSE all doors behind you.
 ACTIVATE the nearest fire alarm pull station.
 CALL 911 or 9-911 to notify the Fire Service.
 USE a fire extinguisher to extinguish the fire if possible.
 FOLLOW the instructions of the Assembly Area Coordinator.

Project

TYNES BAY ENERGY FACILITY

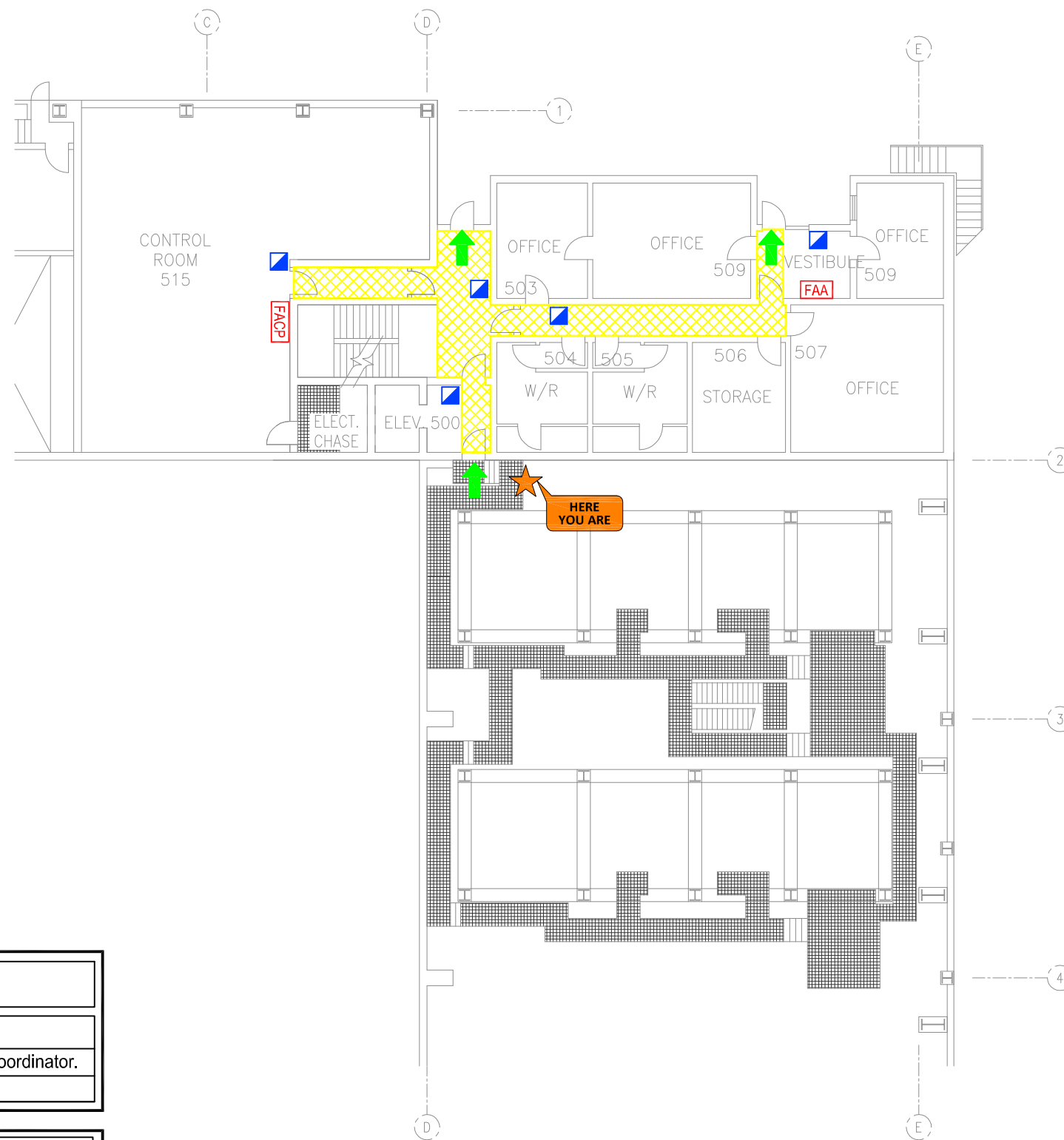
DEVONSHIRE PARISH, BERMUDA

Drawing

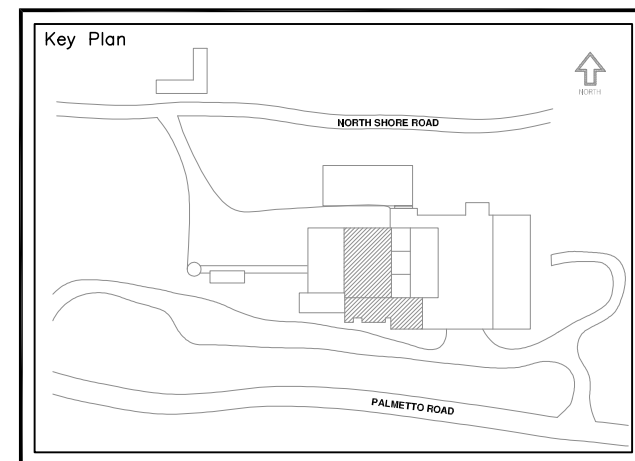
PLAN AT ADMINISTRATION LEVELS 5, AND AT BOILER HOUSE ELEVATION (75'-6")

Drawing no.

FSP-6



LEGEND	
	MANUAL PULL STATION
	FIRE ALARM CONTROL PANEL
	FIRE ALARM ANNUNCIATOR
	HOSE VALVE
	EXIT DOOR
	EVACUATION ROUTE
	EXIT STAIR
	YOU ARE HERE



UPON HEARING FIRE ALARM

REMAIN CALM and be alert for signs of fire.
 FOLLOW the instructions of the Assembly Area Coordinator.
 CLOSE all doors behind you.

UPON DISCOVERY OF SMOKE OR FIRE

REMOVE person(s) from immediate danger.
 CLOSE all doors behind you.
 ACTIVATE the nearest fire alarm pull station.
 CALL 911 or 9-911 to notify the Fire Service.
 USE a fire extinguisher to extinguish the fire if possible.
 FOLLOW the instructions of the Assembly Area Coordinator.

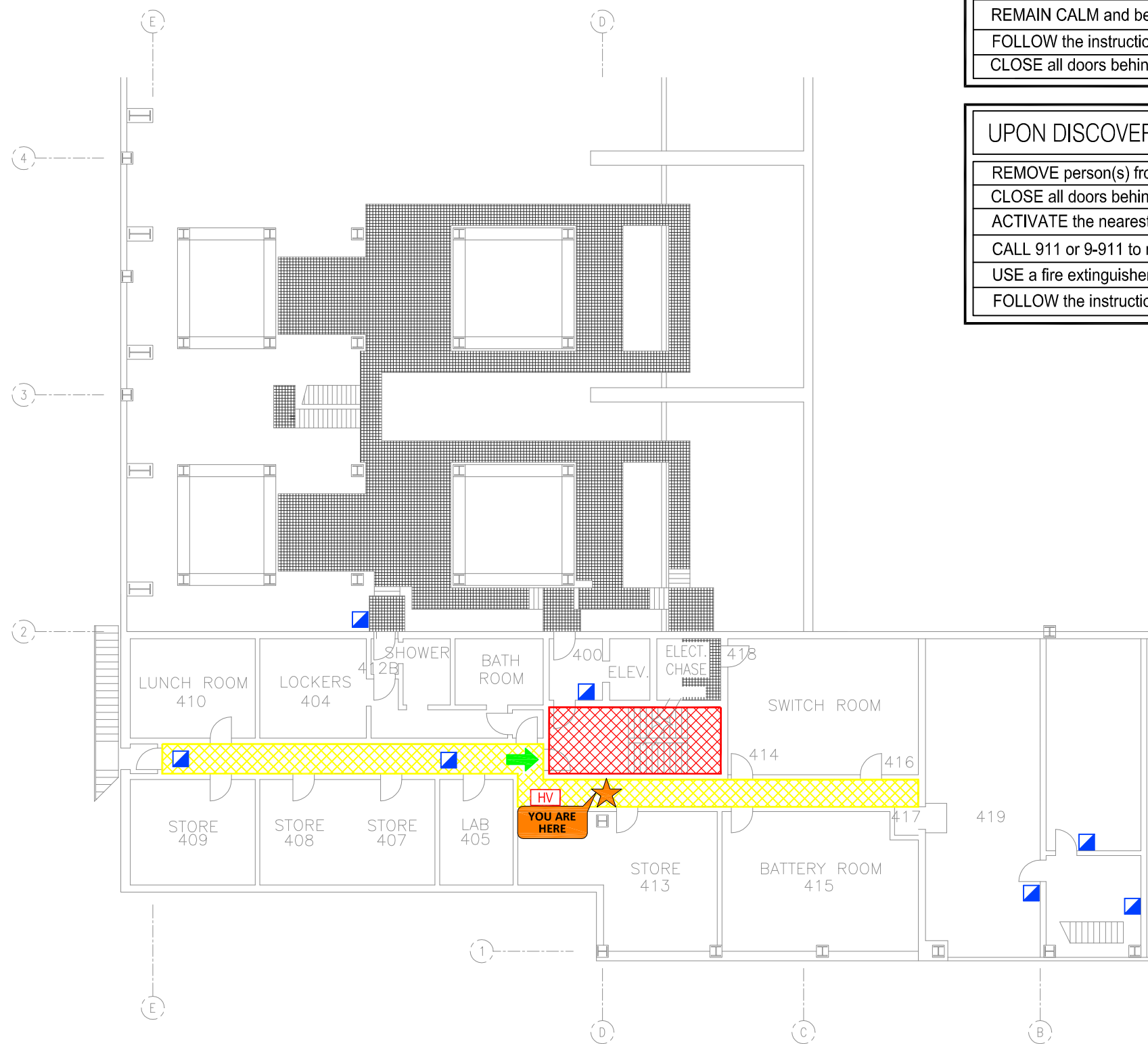
PLAN AT ADMINISTRATION LEVEL 5 AND BOILER HOUSE ELEV. 75'-6"

Project
TYNES BAY WASTE TREATMENT FACILITY
 DEVONSHIRE PARISH,
 BERMUDA

Drawing
PLAN AT ADMINISTRATION LEVELS 5, AND AT BOILER HOUSE ELEVATION (75'-6")

Drawing no.
FSP-7





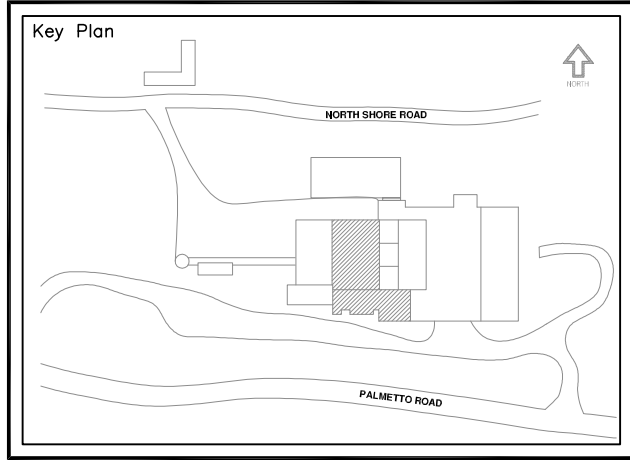
UPON HEARING FIRE ALARM

REMAIN CALM and be alert for signs of fire.
 FOLLOW the instructions of the Assembly Area Coordinator.
 CLOSE all doors behind you.

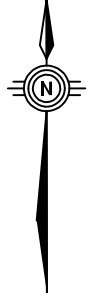
UPON DISCOVERY OF SMOKE OR FIRE

REMOVE person(s) from immediate danger.
 CLOSE all doors behind you.
 ACTIVATE the nearest fire alarm pull station.
 CALL 911 or 9-911 to notify the Fire Service.
 USE a fire extinguisher to extinguish the fire if possible.
 FOLLOW the instructions of the Assembly Area Coordinator.

LEGEND	
	MANUAL PULL STATION
	FIRE ALARM CONTROL PANEL
	FIRE ALARM ANNUNCIATOR
	HOSE VALVE
	EXIT DOOR
	EVACUATION ROUTE
	EXIT STAIR
	YOU ARE HERE



PLAN AT ADMINISTRATION LEVEL 4 AND BOILER HOUSE ELEV. 62'-4"



Project

TYNES BAY ENERGY FACILITY

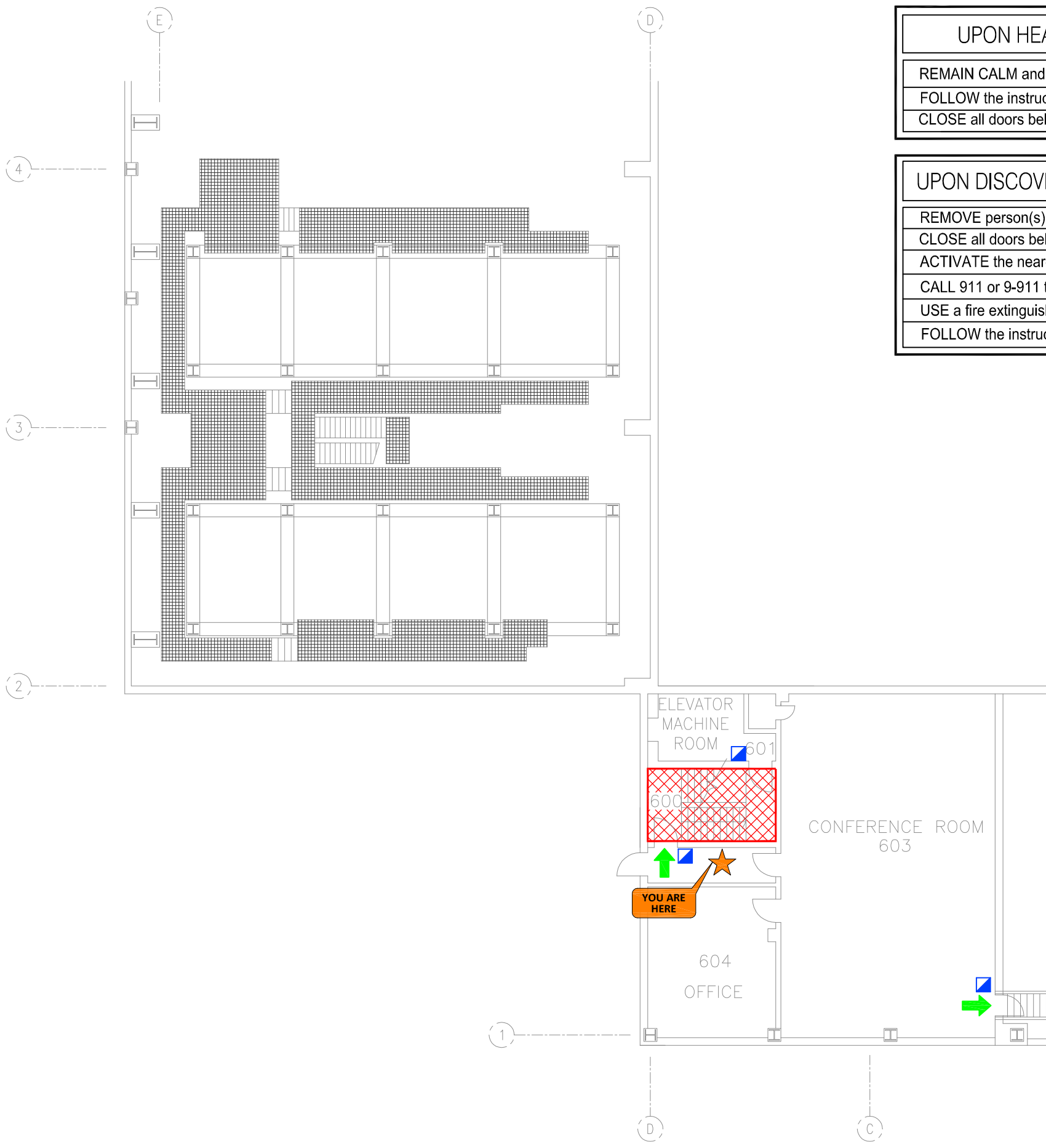
DEVONSHIRE PARISH, BERMUDA

Drawing

PLAN AT ADMINISTRATION LEVELS 4 AND AT BOILER HOUSE ELEVATION (62'-4")

Drawing no.

FSP-8



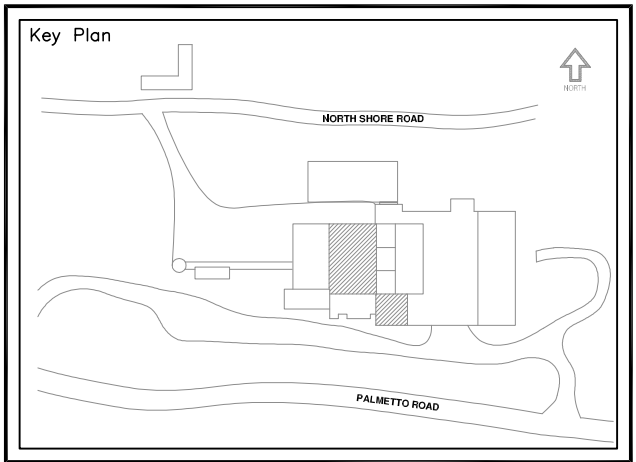
UPON HEARING FIRE ALARM

REMAIN CALM and be alert for signs of fire.
 FOLLOW the instructions of the Assembly Area Coordinator.
 CLOSE all doors behind you.

UPON DISCOVERY OF SMOKE OR FIRE

REMOVE person(s) from immediate danger.
 CLOSE all doors behind you.
 ACTIVATE the nearest fire alarm pull station.
 CALL 911 or 9-911 to notify the Fire Service.
 USE a fire extinguisher to extinguish the fire if possible.
 FOLLOW the instructions of the Assembly Area Coordinator.

LEGEND	
	MANUAL PULL STATION
	FIRE ALARM CONTROL PANEL
	FIRE ALARM ANNUNCIATOR
	HOSE VALVE
	EXIT DOOR
	EVACUATION ROUTE
	EXIT STAIR
	YOU ARE HERE



Project

TYNES BAY ENERGY FACILITY

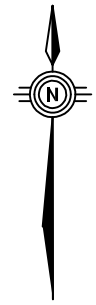
DEVONSHIRE PARISH, BERMUDA

Drawing

PLAN AT ADMINISTRATION LEVEL 6 , AND AT BOILER HOUSE ELEVATION (87'-3")

Drawing no.

FSP-9



PLAN AT ADMINISTRATION LEVEL 6 AND BOILER HOUSE ELEV. 87'-3"









UPON HEARING FIRE ALARM

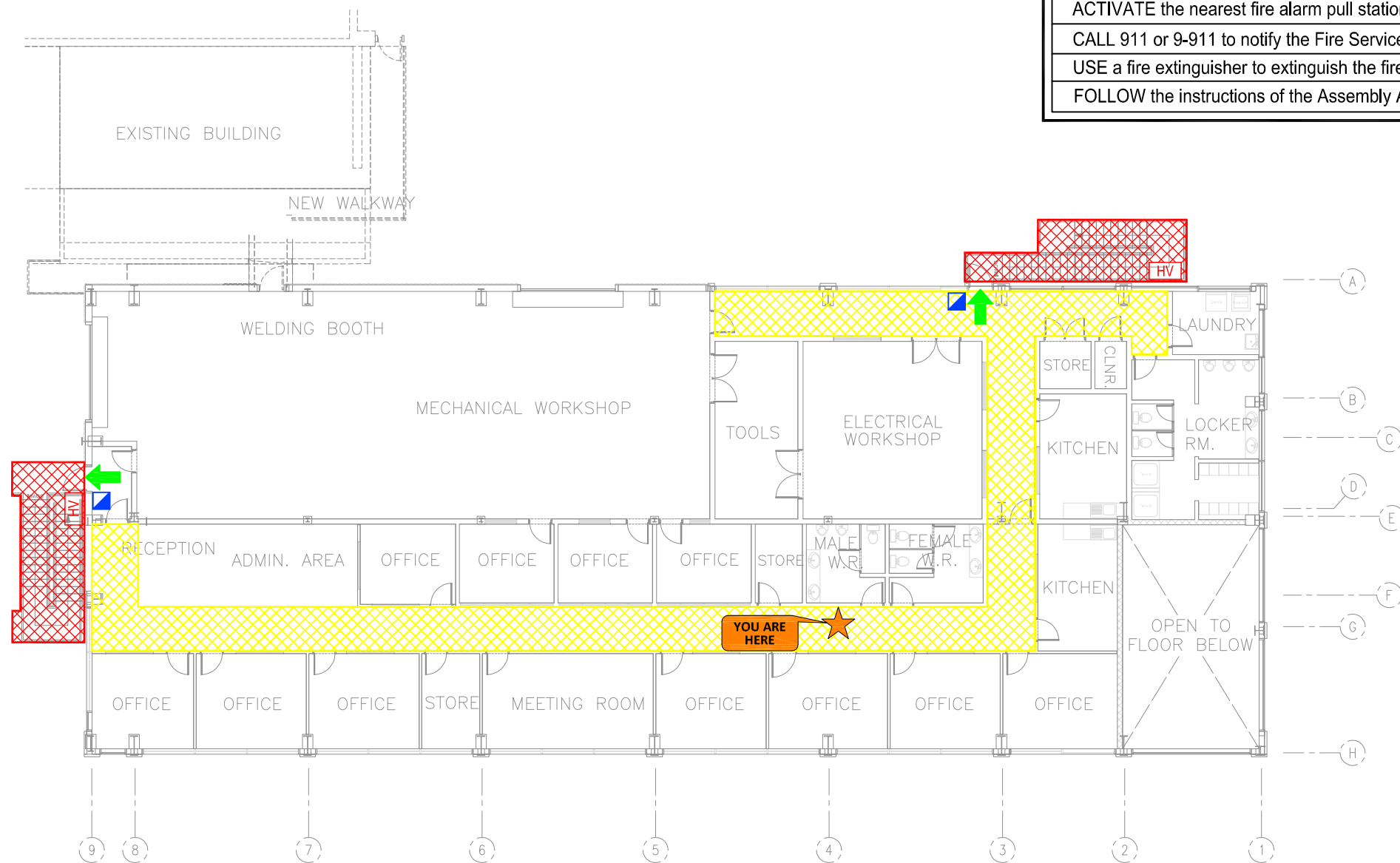
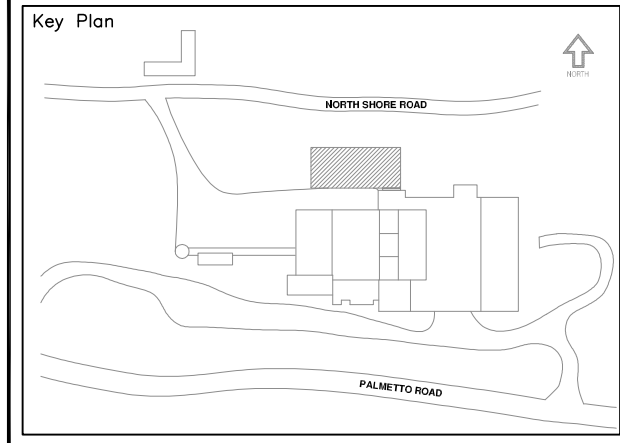
REMAIN CALM and be alert for signs of fire.
 FOLLOW the instructions of the Assembly Area Coordinator.
 CLOSE all doors behind you.

UPON DISCOVERY OF SMOKE OR FIRE

REMOVE person(s) from immediate danger.
 CLOSE all doors behind you.
 ACTIVATE the nearest fire alarm pull station.
 CALL 911 or 9-911 to notify the Fire Service.
 USE a fire extinguisher to extinguish the fire if possible.
 FOLLOW the instructions of the Assembly Area Coordinator.

LEGEND

-  MANUAL PULL STATION
-  FIRE ALARM CONTROL PANEL
-  FIRE ALARM ANNUNCIATOR
-  HOSE VALVE
-  EXIT DOOR
-  EVACUATION ROUTE
-  EXIT STAIR
-  YOU ARE HERE



PLAN AT LEVEL 58'-8"

Project
TYNES BAY ENERGY FACILITY
 DEVONSHIRE PARISH,
 BERMUDA

Drawing
ASH PROCESSING BUILDING AT ELEVATION (58'-8")

Drawing no.
FSP-10



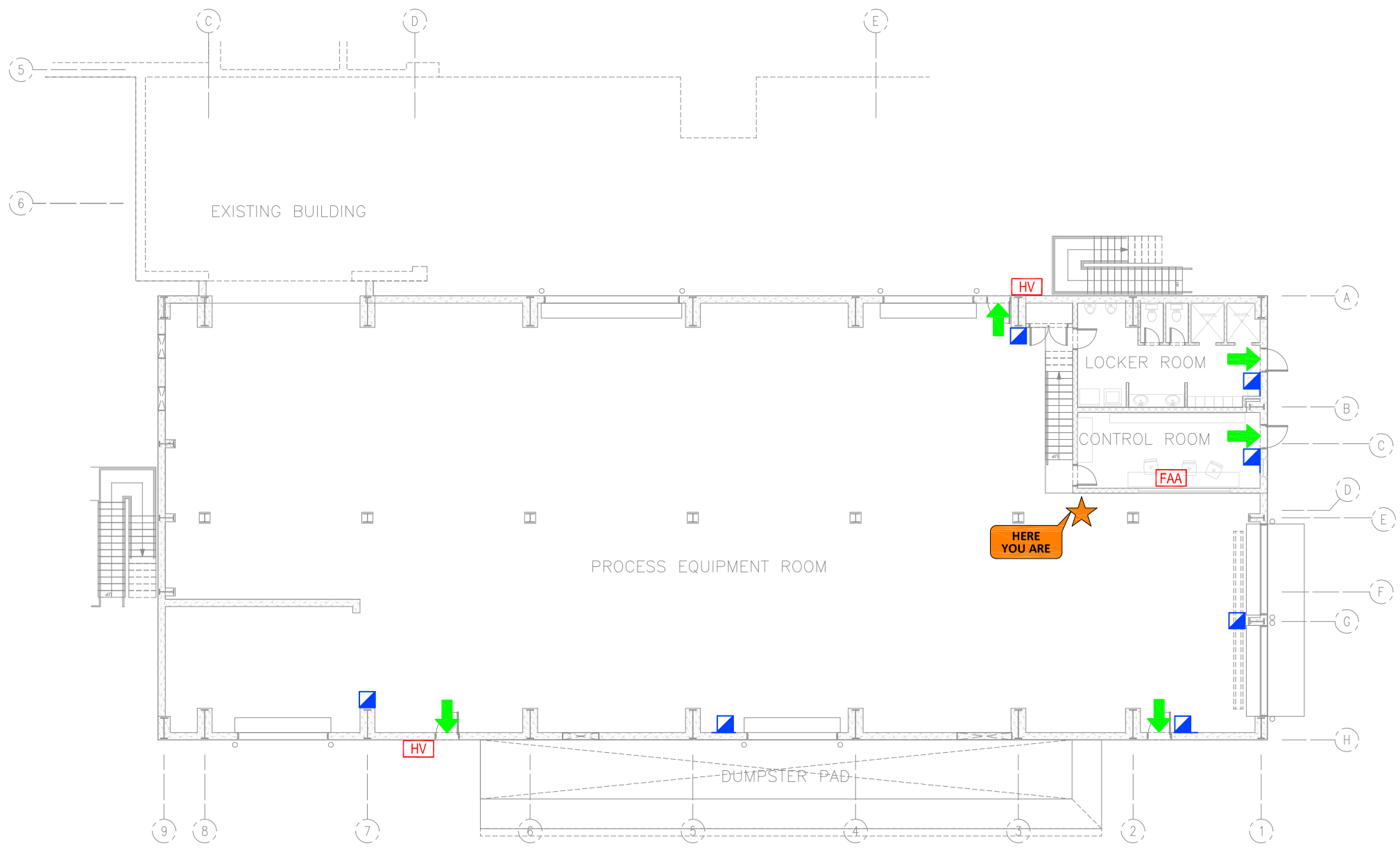
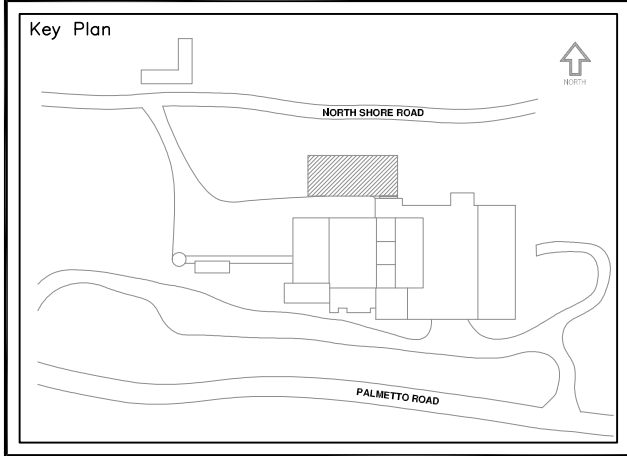
UPON HEARING FIRE ALARM

REMAIN CALM and be alert for signs of fire.
 FOLLOW the instructions of the Assembly Area Coordinator.
 CLOSE all doors behind you.

UPON DISCOVERY OF SMOKE OR FIRE

REMOVE person(s) from immediate danger.
 CLOSE all doors behind you.
 ACTIVATE the nearest fire alarm pull station.
 CALL 911 or 9-911 to notify the Fire Service.
 USE a fire extinguisher to extinguish the fire if possible.
 FOLLOW the instructions of the Assembly Area Coordinator.

LEGEND	
	MANUAL PULL STATION
	FIRE ALARM CONTROL PANEL
	FIRE ALARM ANNUNCIATOR
	HOSE VALVE
	EXIT DOOR
	EVACUATION ROUTE
	EXIT STAIR
	YOU ARE HERE



PLAN AT LEVEL 19'-8"

Project

TYNES BAY ENERGY FACILITY

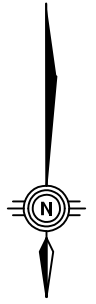
DEVONSHIRE PARISH, BERMUDA

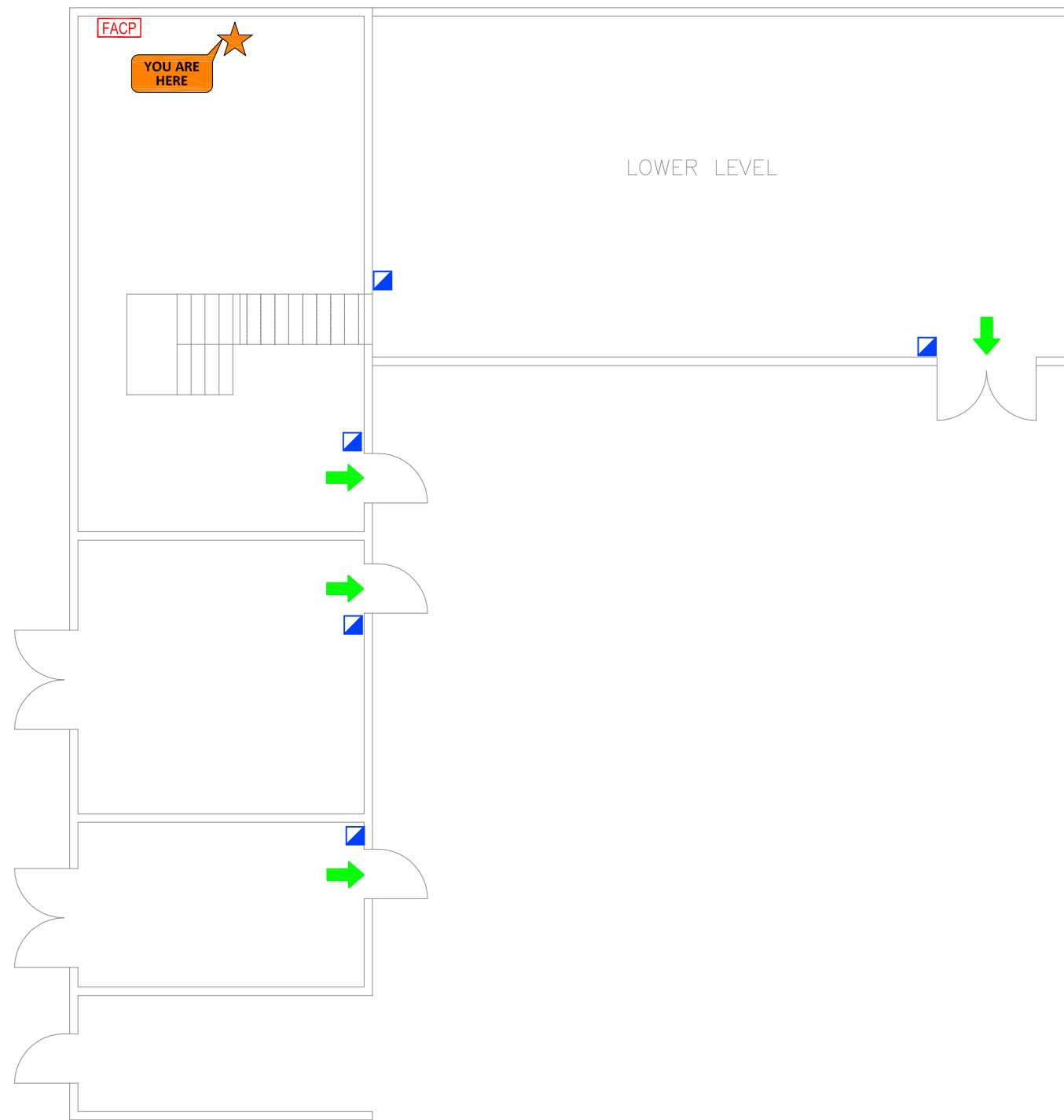
Drawing

ASH PROCESSING BUILDING AT ELEVATION (19'-8")

Drawing no.

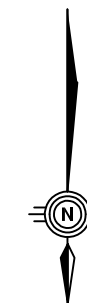
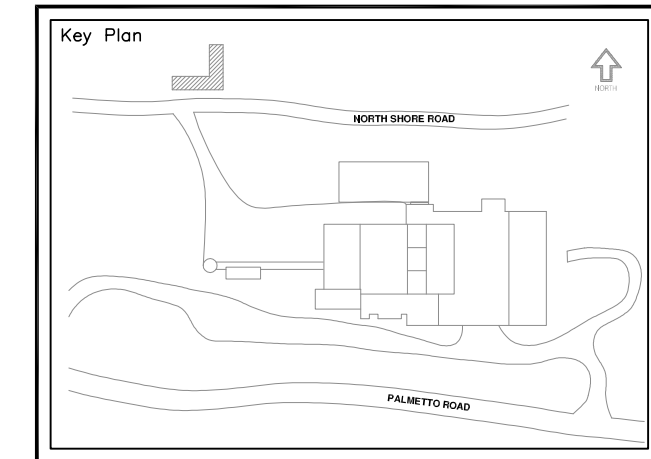
FSP-11





SEA WATER PUMPING STATION

LEGEND	
	MANUAL PULL STATION
	FIRE ALARM CONTROL PANEL
	FIRE ALARM ANNUNCIATOR
	HOSE VALVE
	EXIT DOOR
	EVACUATION ROUTE
	EXIT STAIR
	YOU ARE HERE



UPON HEARING FIRE ALARM

REMAIN CALM and be alert for signs of fire.
 FOLLOW the instructions of the Assembly Area Coordinator.
 CLOSE all doors behind you.

UPON DISCOVERY OF SMOKE OR FIRE

REMOVE person(s) from immediate danger.
 CLOSE all doors behind you.
 ACTIVATE the nearest fire alarm pull station.
 CALL 911 or 9-911 to notify the Fire Service.
 USE a fire extinguisher to extinguish the fire if possible.
 FOLLOW the instructions of the Assembly Area Coordinator.

Project

TYNES BAY ENERGY FACILITY

DEVONSHIRE PARISH,
BERMUDA

Drawing

SEA WATER PUMPING STATION

Drawing no.

FSP-12