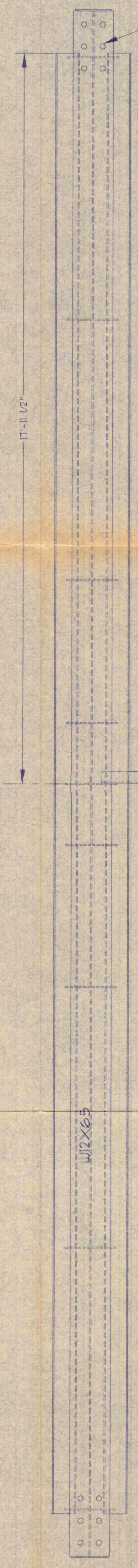
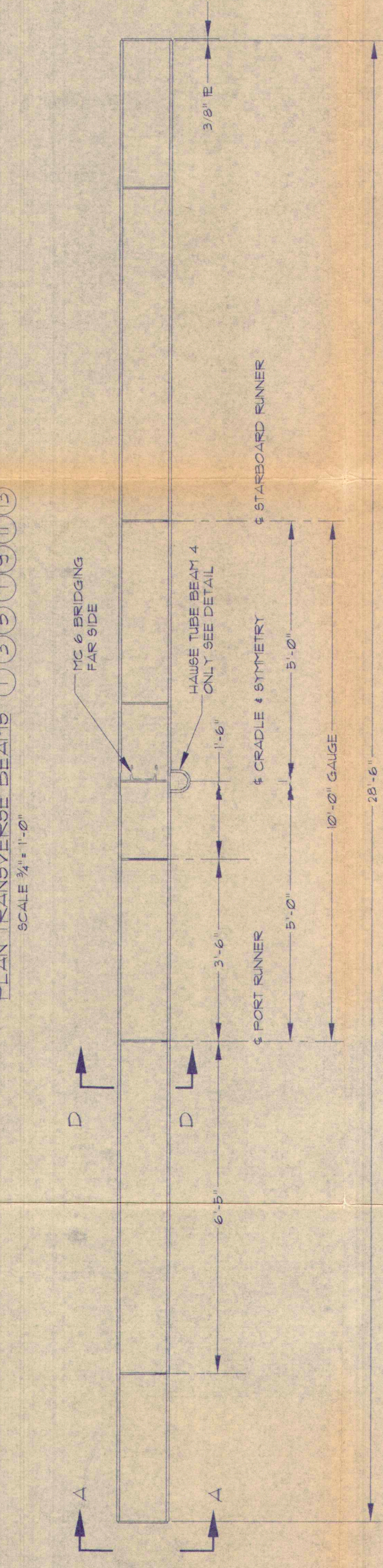


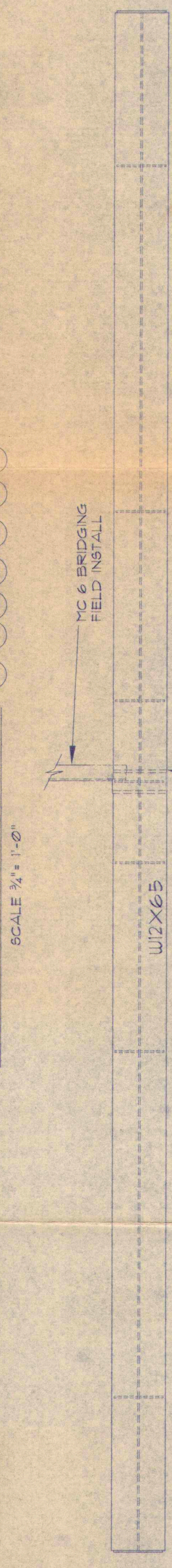
ELEVATION TRANSVERSE BEAMS (SECTION A-A)
SCALE 1/2" = 1'-0"



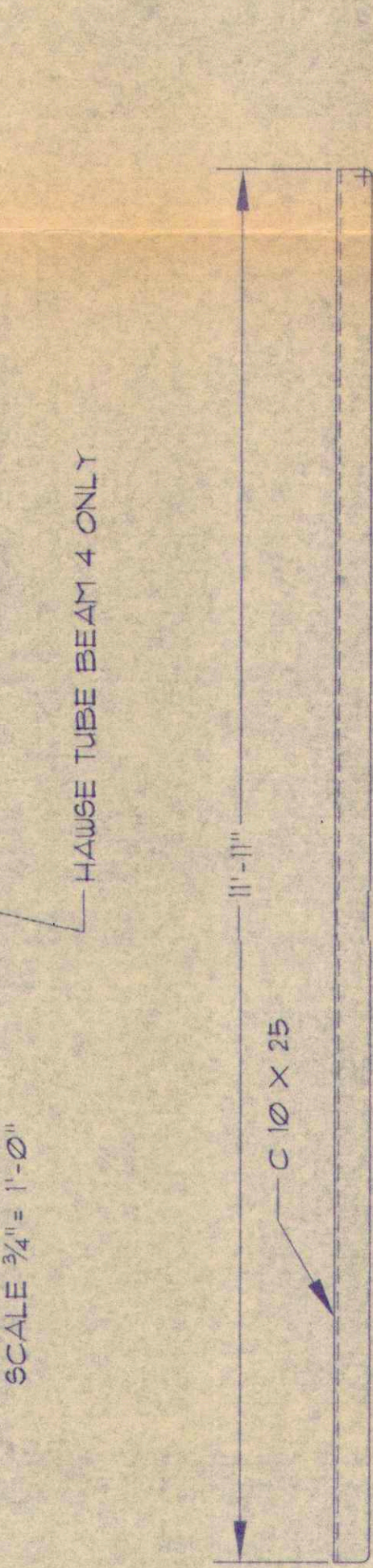
PLAN TRANSVERSE BEAMS (SECTION B-B)
SCALE 3/4" = 1'-0"



ELEVATION TRANSVERSE BEAMS (SECTION C-C)
SCALE 1/2" = 1'-0"



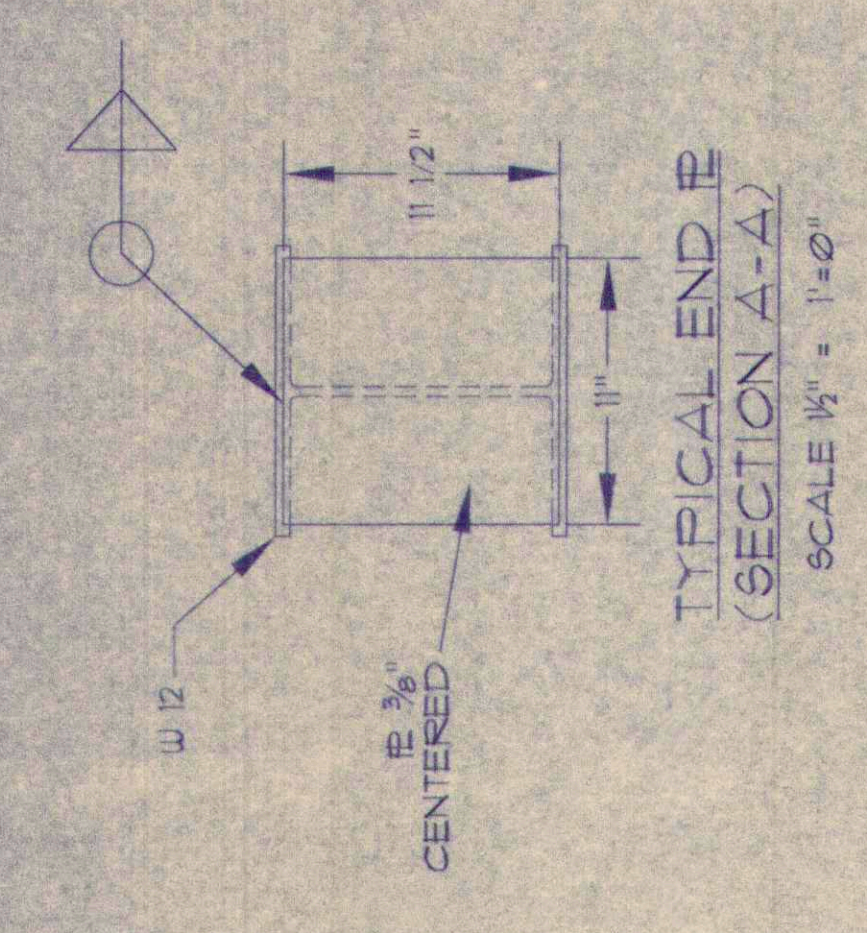
PLAN TRANSVERSE BEAMS (SECTION D-D)
SCALE 3/4" = 1'-0"



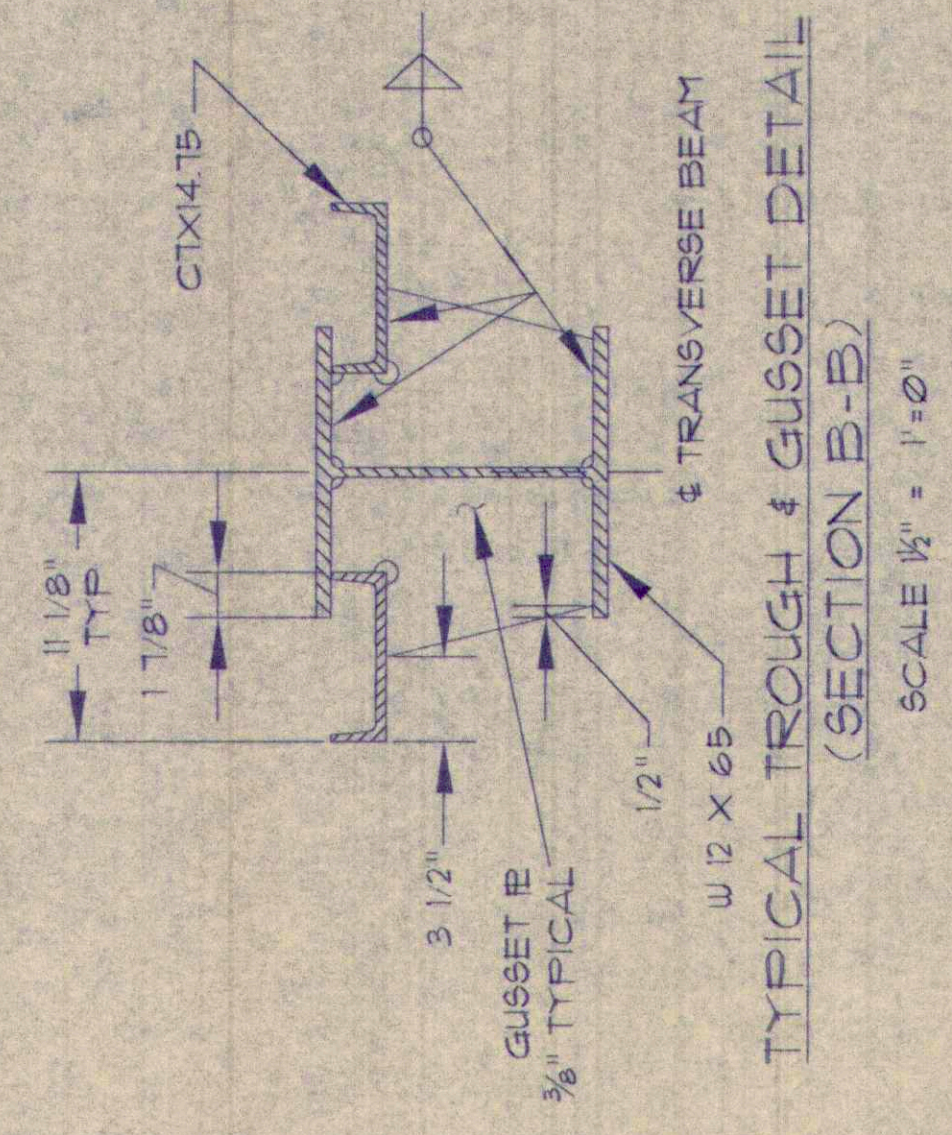
ELEVATION TRANSVERSE BEAMS (SECTION E-E)
SCALE 1/2" = 1'-0"



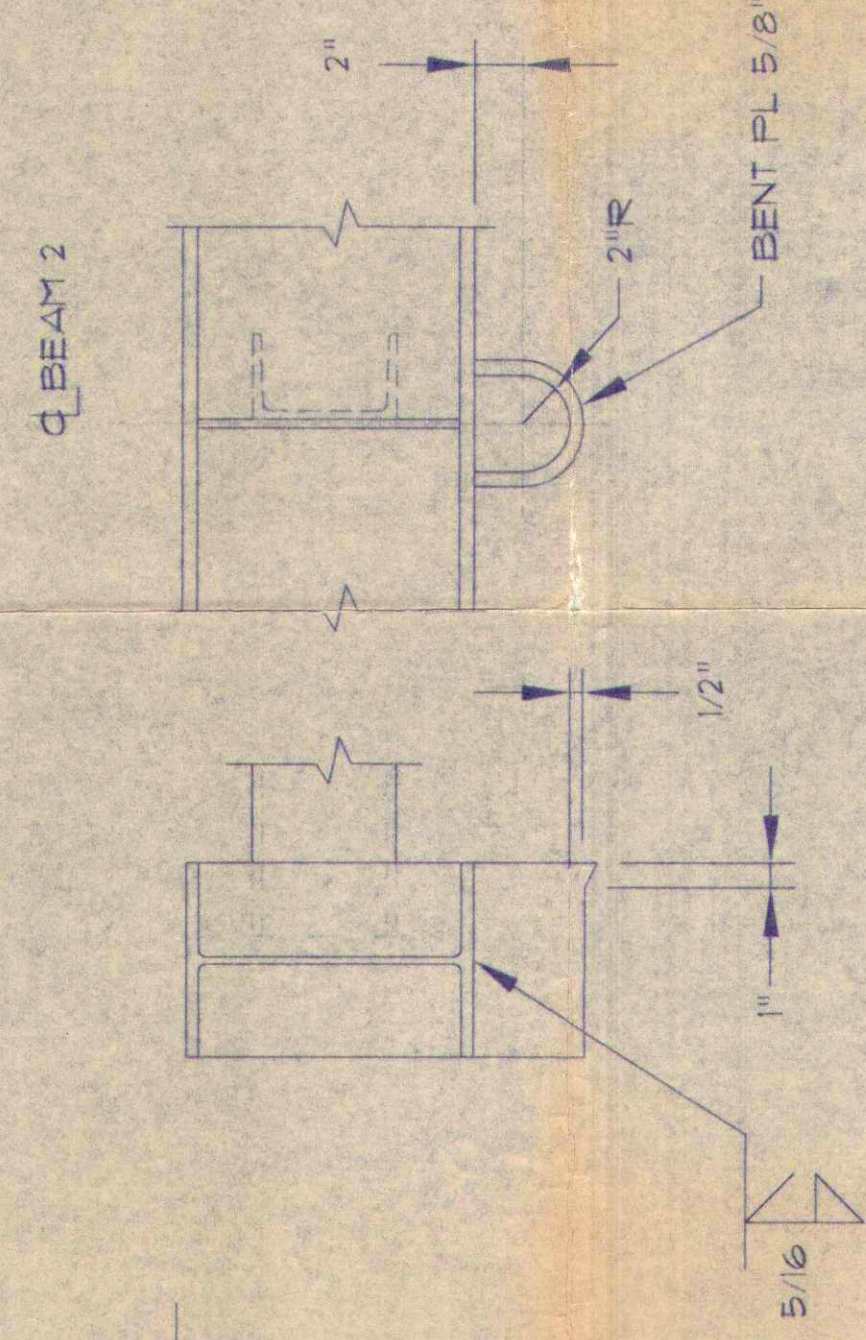
PLAN TRANSVERSE BEAMS (SECTION F-F)
SCALE 3/4" = 1'-0"



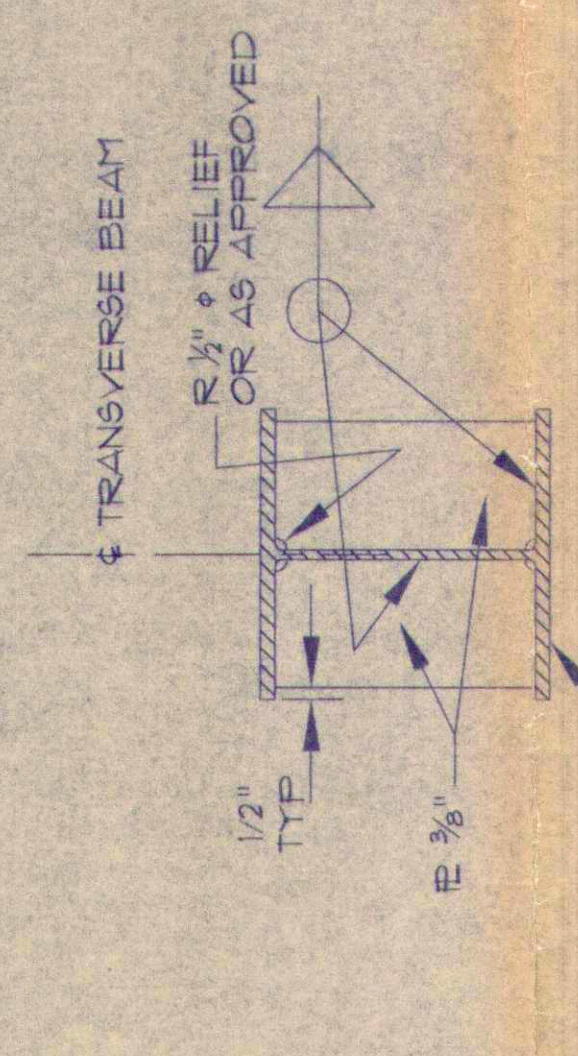
TYPICAL END IE (SECTION A-A)
SCALE 1/2" = 1'-0"



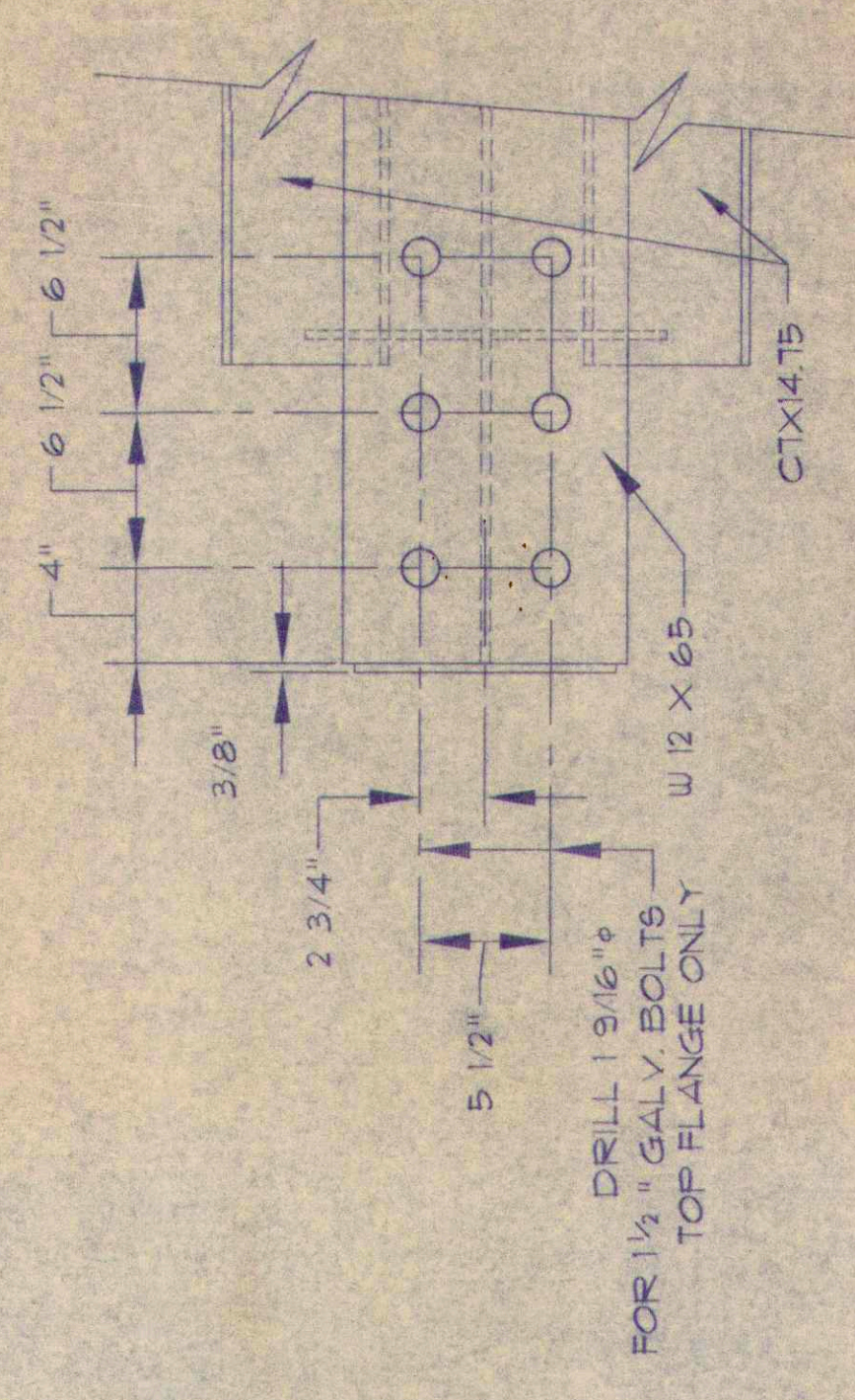
TYPICAL TROUGH & GUSSET DETAIL (SECTION B-B)
SCALE 1/2" = 1'-0"



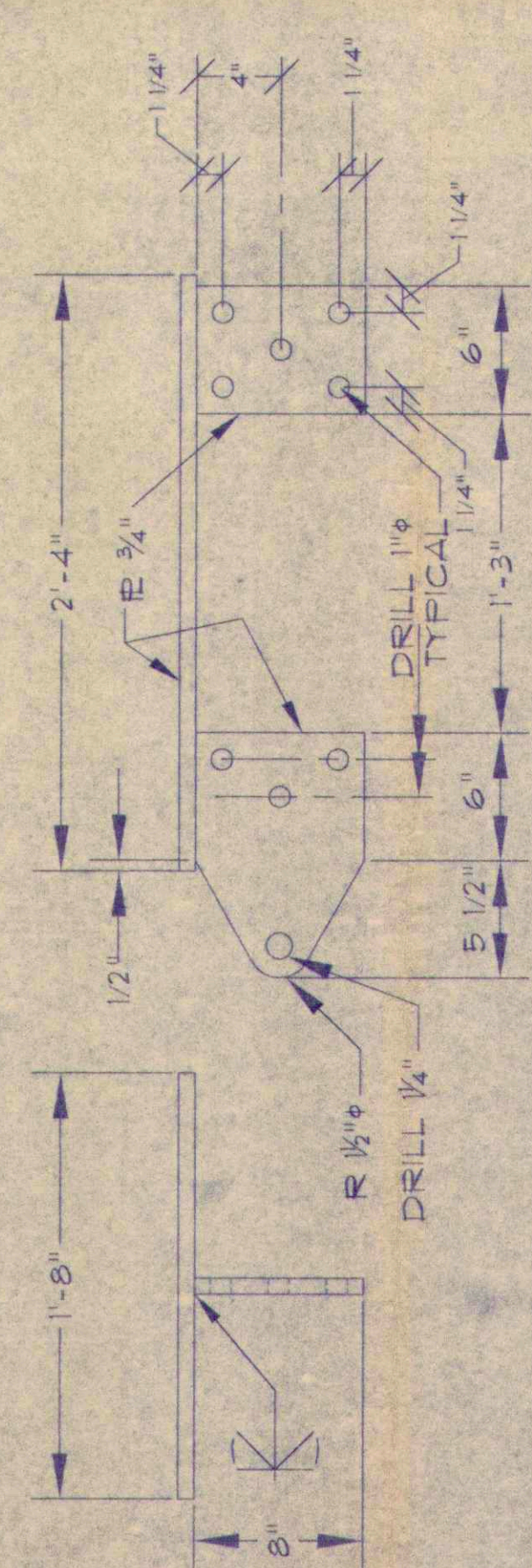
DETAIL - HAUSS PIPE
SCALE 1/2" = 1'-0"



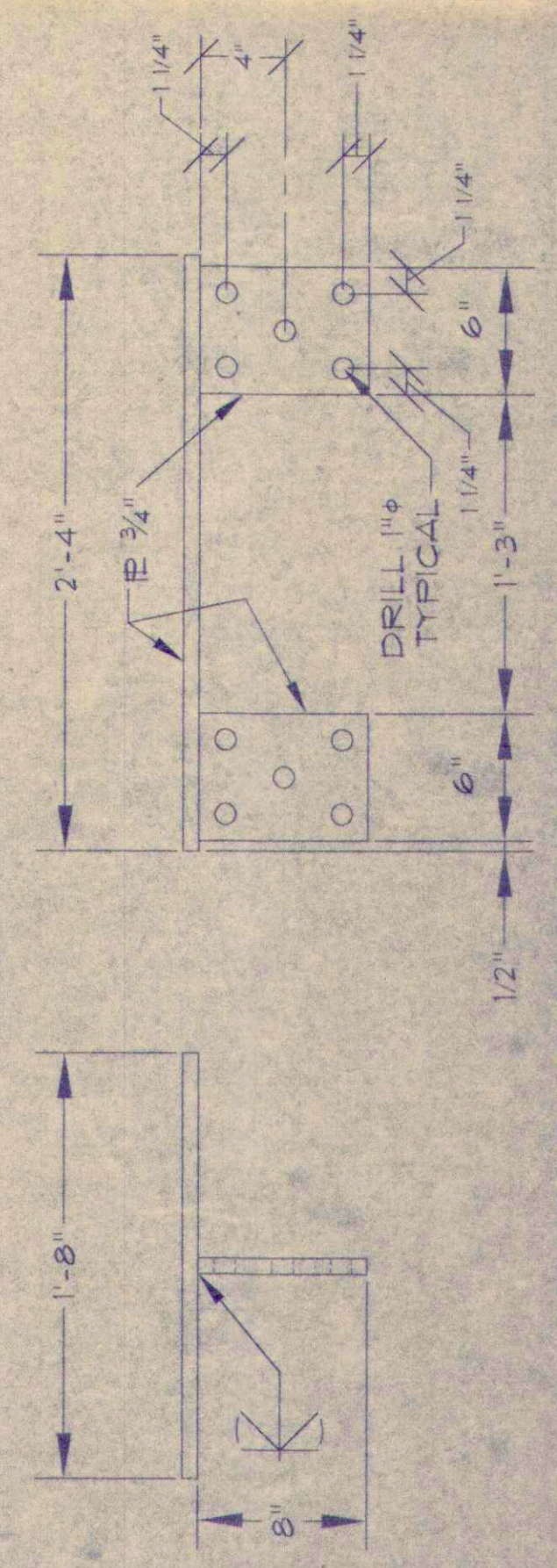
TYPICAL GUSSET IE (SECTION D-D)
SCALE 1/2" = 1'-0"



TYPICAL UPRIGHT DRILL PATTERN (SECTION F-F)
SCALE 1/2" = 1'-0"



CRADLE ATTACHMENT IE GALY FOR EXTENSION OR PONY (4 REQUIRED)
SCALE 1/2" = 1'-0"



CRADLE ATTACHMENT IE GALY (24 REQUIRED)
SCALE 1/2" = 1'-0"

- NOTES**
1. ALL WELDED CONNECTIONS SHALL BE MADE WATERTIGHT.
 2. ALL MATERIAL & WORKMANSHIP SHALL BE IN ACCORDANCE WITH THE LATEST AISC STEEL BUILDING SPECIFICATIONS.
 3. BLAST AND PAINT THE WELDMENT UNITS WITH ANTERCOAT 235 OR EQUAL IN ACCORDANCE WITH THE MFG. RECOMMENDATIONS.
 4. ALL STIFFENERS TO BE FITTED SO THAT THERE IS FULL BEARING OF TOP & BOTTOM UNLESS SHOWN OTHERWISE.
 5. ALL WELDS TO BE 5/16" UNLESS OTHERWISE NOTED.
 6. ALL GALVANIZING TO BE DONE IN ACCORDANCE WITH ASTM 123 APPENDED TO DATE.

ISSUED

SUBJECT TO APPROVAL

**TRANSVERSE BEAMS
USING EXISTING WOOD RUNNERS**
BERMUDA MARINE & PORTS SERVICES
HAMILTON, BERMUDA

MAY 2002

REVISIONS

NO.	DATE	DESCRIPTION
1		
2		
3		

CRANDALL DRY DOCK ENGINEERS, Inc.
GUELPH, U.S.A.

DRG 54402-2