



2020 ANNUAL BERDIN MEETING

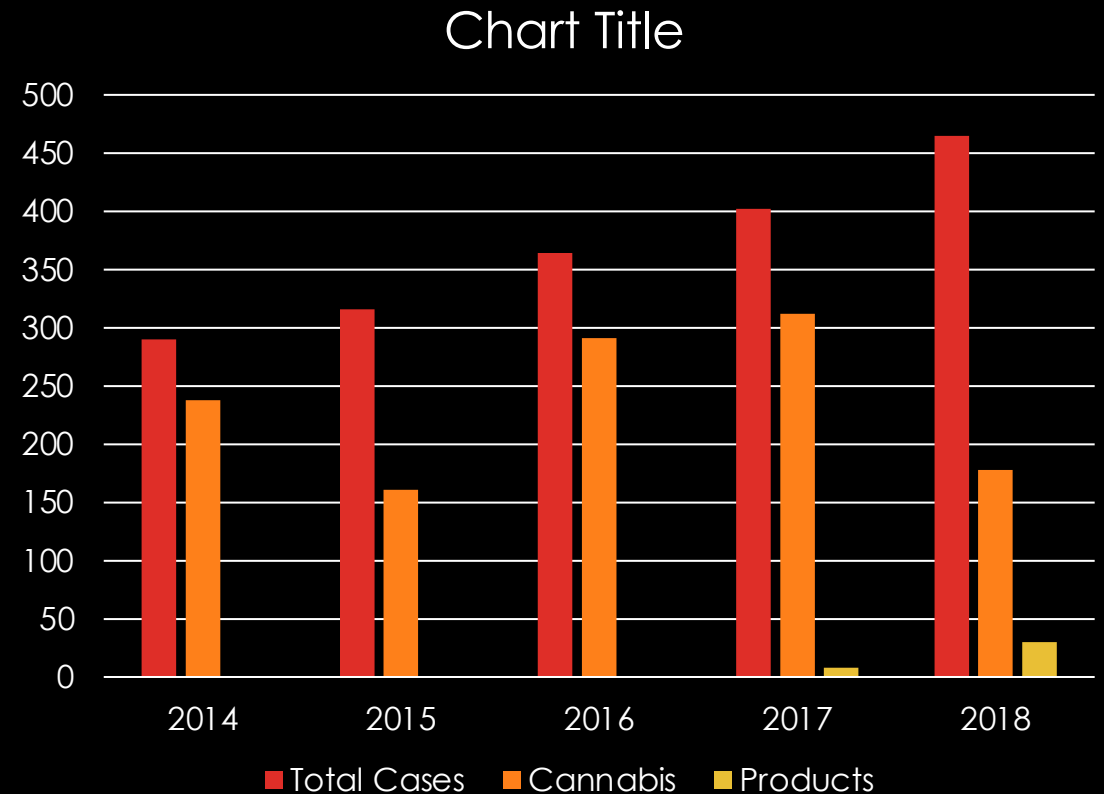
Update from the Government Laboratory

Nadine Kirkos

Senior Government Analyst

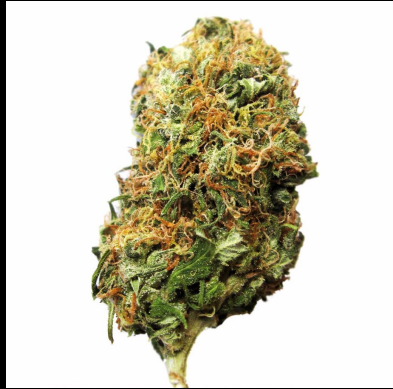
CANNABIS IN BERMUDA

- Appears to be the recreational drug of choice
- Rise in total case submitted each year
- 72% of the total drug cases submitted to the lab are cannabis related
- 2017 starts the spike in cannabis liquids
- Border seizures have kept us very busy this season



MARIJUANA USE IN BERMUDA

Buds/ Flowering Heads



Resin



Kief (dry sift/ pollen)



Leaves





BHO CONCENTRATES



wax

- Softer more opaque consistency/ texture
- heat, moisture, terpenes can create a gooey wax (budder) or soft & brittle wax (crumble/ honeycomb)
- Between 60-80% THC concentration



shatter/sap

- Amber glass transparency
- Up to 80% THC concentration
- Appearance depends on heat, moisture & high terpene content



live resin

- Functions as a purified man-made resin
- Capturing the terpene profile of the live plant
- 70- 80% THC concentration

CANNABIS EDIBLES



Butter- 'cannabutter'

- Infused with cannabis plants
- Concentration varies due to the instability of THC
- Used to make infused foods and treats
- Fatty Oils
 - Coconut oil
 - Olive Oil



Gummy Candy

- Various shapes & colors
- Can contain varying levels of either THC/ CBD or both



CANNABIS EDIBLES

Cannabis Brownies



Dried Infused Fruit



Infused Taffy/ Caramel

LEGISLATIVE CHANGES

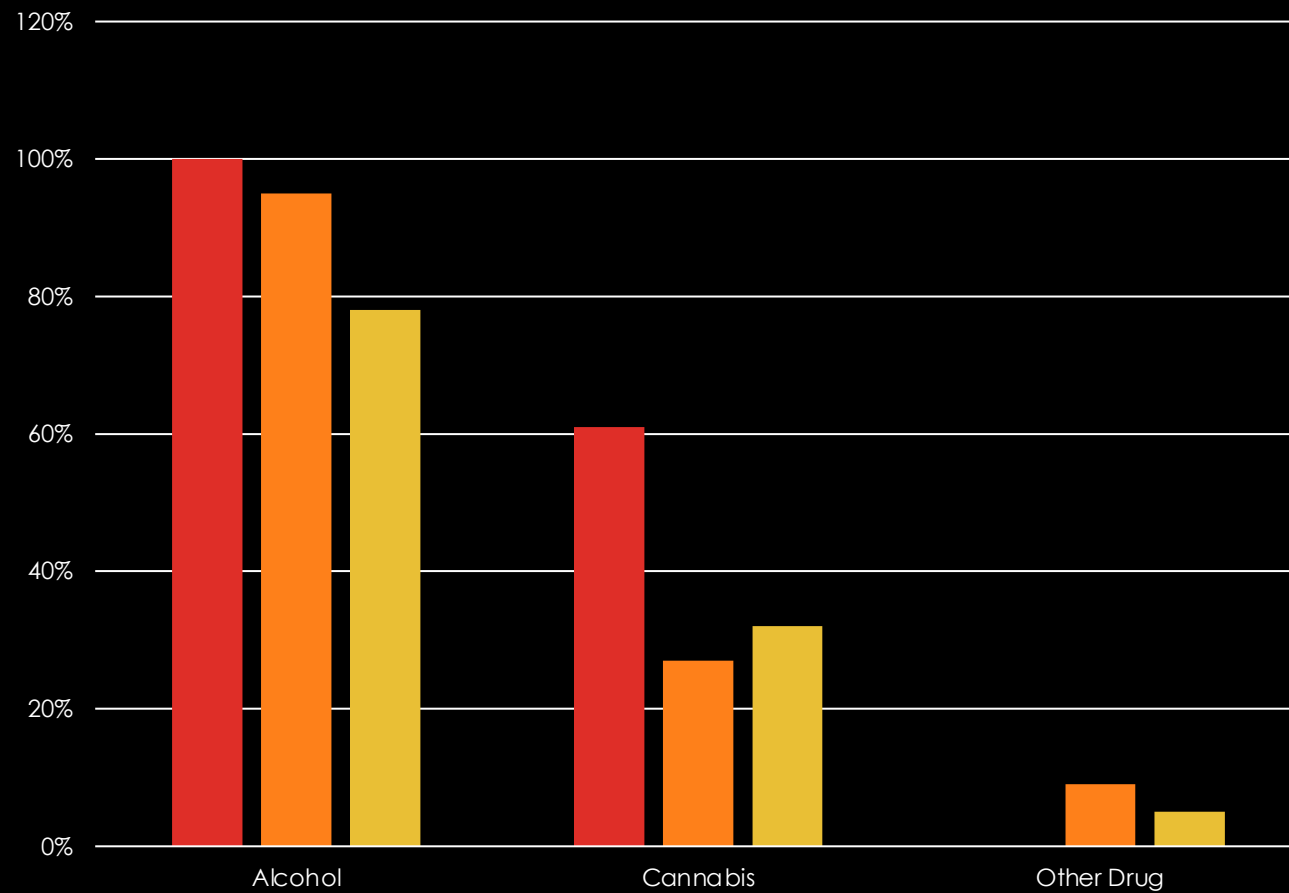
- Misuse of Drugs Decriminalization of Cannabis Act 2017
 - 7 grams or less
 - Does not include resin
 - Cannabis is STILL illegal
 - Increase in the number of 'personal use' cases with 7grams or less
 - Pharmacy & Poisons Schedule 4 Amendment Order 2017
 - Allowance of CBD products containing <1% THC
 - Oils
 - Vape Pens/ E-Cigarettes
 - Chews & Gummies
- Misuse Of Drugs Act amendment 2019
Cannabis redefined as grater than 1%

JUNE 2020 – JULY 2020

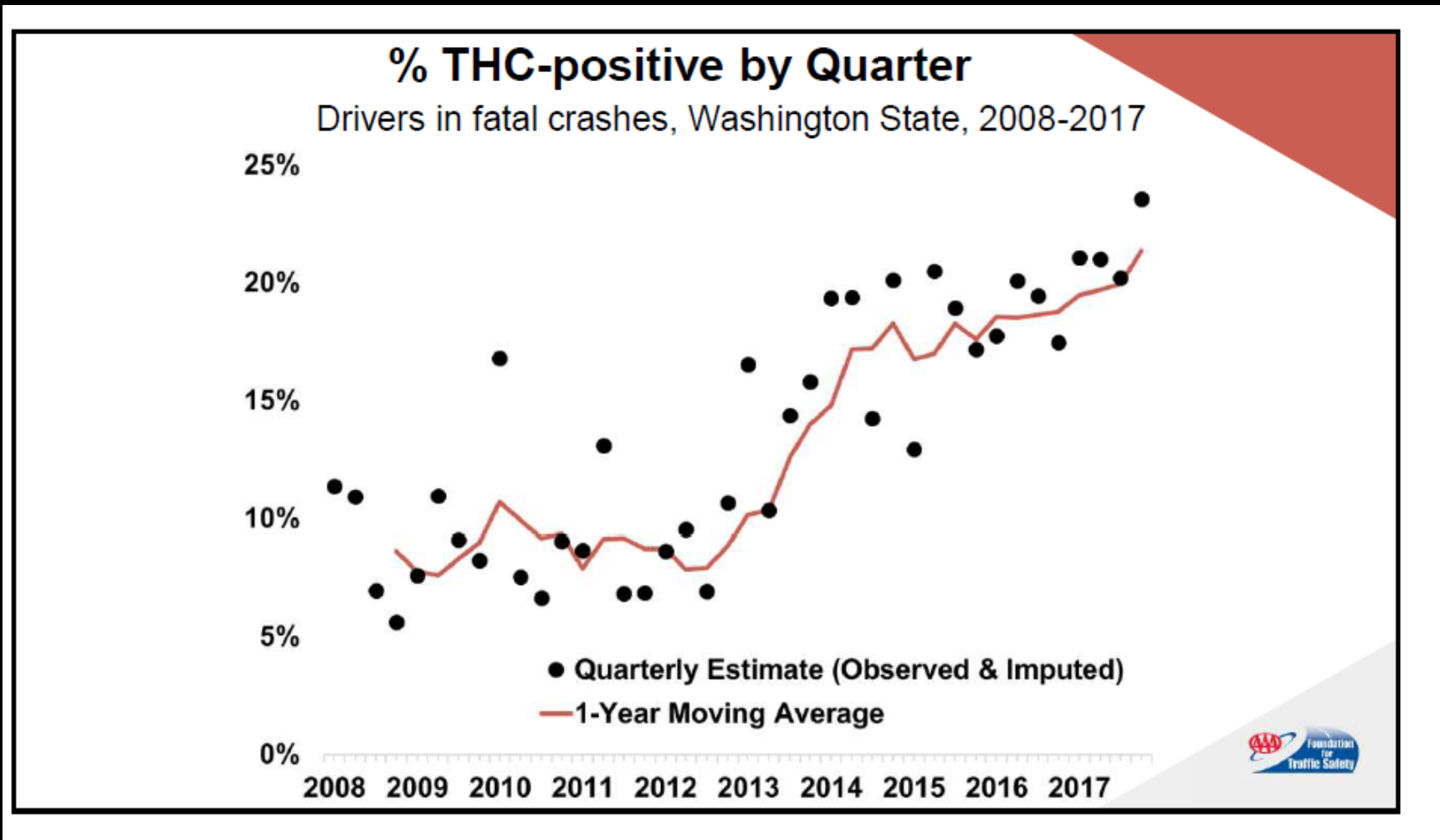
- Cannabis Regulatory Act
- The policy intends that the different classes of licensed activities which will be available are: –
- Cultivation by commercial growers;
- Cannabis retail shops;
- Manufacture;
- Research;
- Transport;
- Import; and
- Export.

CANNABIS AND DRIVING

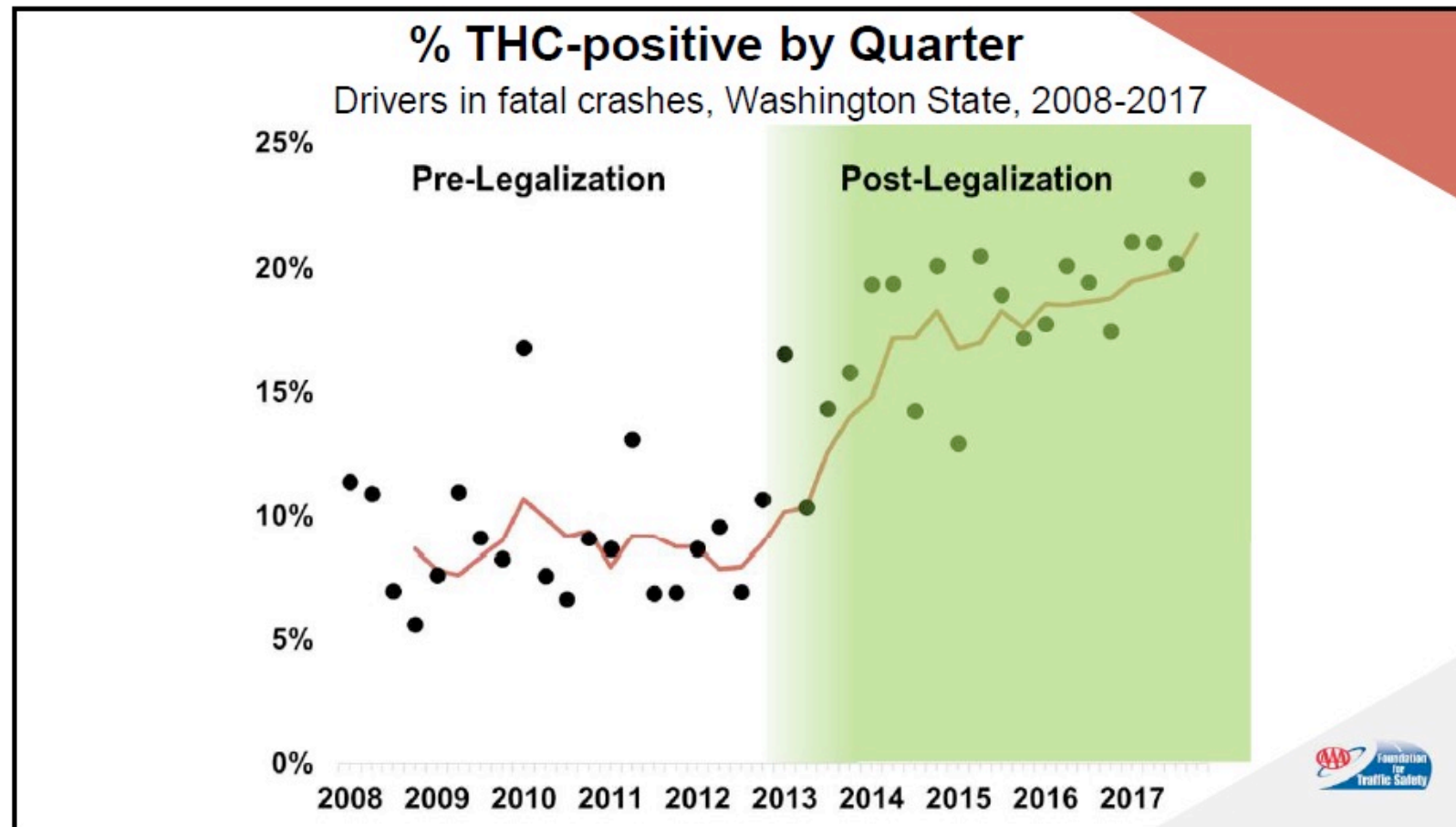
Road Traffic Accidents



CANNABIS AND DRIVING



CANNABIS AND DRIVING



FUTURE IMPACT OF NEW LEGISLATION ON ROAD SAFETY

- Anticipate increase incidence of cannabis use and driving
- THC impairs judgement
- Evidence of impairment 3.5 hours after feeling stoned

MAINTAINING AND INCREASING ROAD SAFETY

- Road Traffic Act
- Drug testing prior to / as requirement for driving license
- Incorporate in Project Ride

- <https://www.youtube.com/watch?v=n4X2lbxc5O4>



QUESTIONS?